



100a solar battery cabinet lithium battery pack parameters





100a solar battery cabinet lithium battery pack parameters



[48V 50Ah & 100Ah Lithium battery rack & system](#)

48V 50Ah & 100Ah Lithium battery rack & system
Modular design Life cycle : 8000 cycles at 25°C,
60% DoD 1.5C continuous discharging current
High surge discharging current up to 2C

12V 100Ah Lithium Battery Pack

Ideal for home backup and small solar systems, this 12V 100Ah battery combines portability with high performance. Featuring A-grade lithium cells and 80% depth of discharge, it delivers 6,000+ cycles ...



Battery system home storage series

When the battery packs are used in parallel, different PACK can be distinguished by their hardware addresses, and the hardware address of each PACK in the entire battery stack is unique.

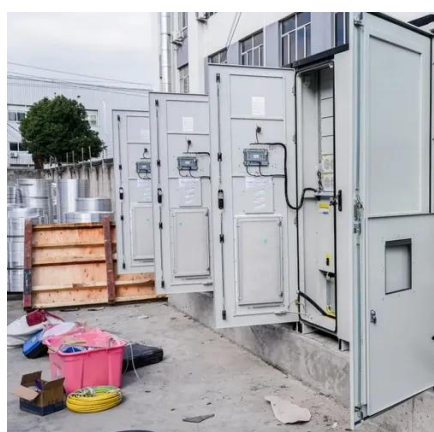
48V 100Ah LiFePO4 Lithium Battery, Server Rack Battery with ...

With RS485 and CAN connections, it enables seamless communication with most solar inverters for comprehensive monitoring of the solar battery, making it an intelligent and practical ...



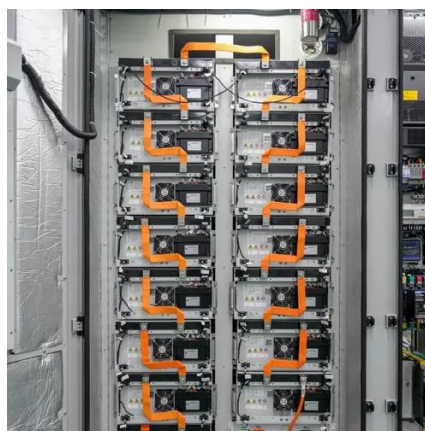
[Vatrer 48V 100Ah Heated Server Rack Lithium Solar Battery](#)

This 48V 100Ah heated rack-mount solar battery utilizes LiFePO4 technology, providing a reliable 5.12kWh capacity for efficient solar energy storage. Its heating function solves common problems like ...



24V 100AH Specifications

Overcharge performance After the standard battery is charged, the initial state of the battery is measured. When the battery status is normal, the current is charged to 10.0V at 3C current, and then ...



[NPFC Series Product Manual 48NPFC100 Lithium Battery Pack](#)

Cabinet embedded installation dimensions, and adapt to seismic iron frame floor installation. Small size, light weight, greatly reduce the station floor area and reduce the building floor bearing requirements. ...



48V/51.2V 100Ah Lithium Battery



After unpacking, please check the battery and packing list first, if the battery is damaged or spare parts are missing, please contact the dealer. Before installation, be sure to cut off the grid power and make ...



[EG4®-LL 48V 100AH Rack-Mounted Battery](#)

Establish communication between the batteries via the "Battery-Comm" ports starting with the right port on the last battery address and terminating on the left port of the host.

[NEW-100Ah LiFePO4 Lithium Iron Phosphate Battery](#)

Lithium has ten times the cycle life as SLA at room temperature. Even at an elevated temperature, lithium still has increased cycle life over SLA at room temperature. Lastly, Lithium ...





Contact Us

For catalog requests, pricing, or partnerships, please visit:

<https://id2market.eu>

Phone: +34 910 56 87 45

Email: info@id2market.eu

Scan the QR code to access our WhatsApp.

