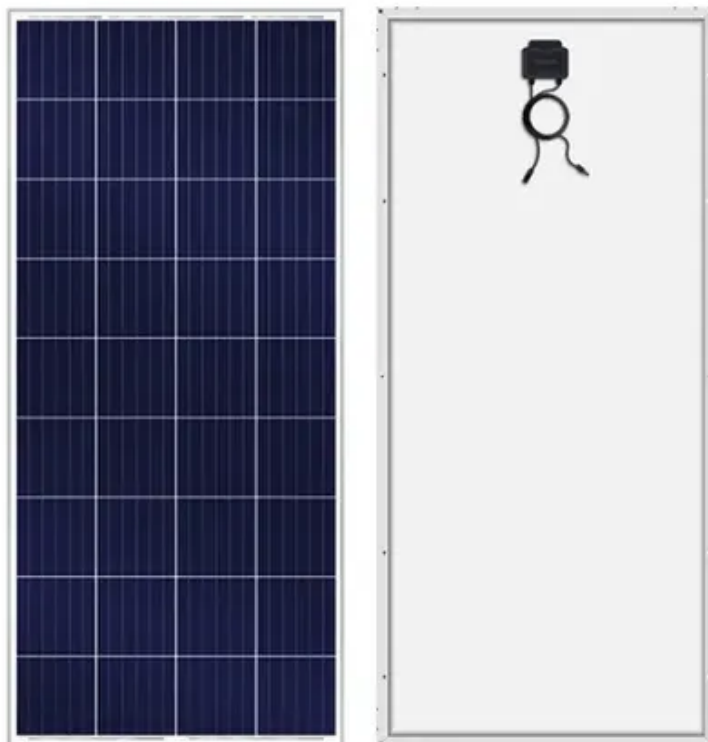




# 12V to 220V half-bridge inverter frame





## 12V to 220V half-bridge inverter frame



### How To Make 12v DC to 220v AC Converter/Inverter Circuit Design?

Circuit Design Explanation  
12V DC to 220V AC Converter Circuit Operation  
Applications of 12V DC to 220V AC Converter Circuit  
Limitations

When this device is powered using the 12V battery, the 555 timer connected in astable mode produces square wave signal of 50Hz frequency. When the output is at logic high level, diode D2 will conduct and the current will pass through diode D1, R3 to the base of transistor Q1. Thus transistor Q1 will be switched on. When the output is at logic low level, diode D1 will conduct ... When this device is powered using the 12V battery, the 555 timer connected in astable mode produces square wave signal of 50Hz frequency. When the output is at logic high level, diode D2 will conduct and the current will pass through diode D1, R3 to the base of transistor Q1. Thus transistor Q1 will be switched on. When the output is at logic low level, diode D1 will conduct and current will flow via and D1 and R4 to the base of Q2, causing it to be switched on. This allows the DC voltage to be produced across the primary of the transformer at alternate intervals. The capacitor ensures that the frequency of the signal is at the required fundamental frequency. See more

New content will be added above the current area of focus upon selection See more on electronicshub

Missing: half-bridge  
Must include: half-bridge  
Images of 12V to 220V Half-Bridge Inverter Frame  
24V Inverter To 220V Ac  
24V To 120V Inverter  
24V Dc To 220V Ac Inverter  
24V Dc To 230V Ac Inverter  
24V To 240V Inverter  
12V To 230V Inverter Transformerless  
12V To 220V Inverter  
12V Dc To 240V Ac Inverter  
Inverter 24V To 220V  
300W 500W 1000W 1500W car Inverter  
12V to 220v Half-Bridge Power  
How To Make A 12V To 220V H Bridge Inverter -  
How to Build an Inverter Circuit Diagram for 12v to 220v Conversion  
12V to 220V Inverter - PCB  
HERO  
12V DC to 220V AC Inverter Circuit & PCB  
12V to 220V Inverter Using IR2153 With Casing : 4 Steps - Instructables  
A Circuit Diagram for Converting 12v to 220v: Inverter Design Explained  
DC 12V to 220V AC 50Hz Full bridge



Inverter Boost - GrandadoHow To Make a 12V to 220V DC to AC Inverter with SG3525 PWM IC and Full Inverter ,, H Bridge ,, 12V to 220V ,,50Hz - See allelcircuits

## 12V to 220V 500W Inverter 60Hz with IR2153D IC + PCB

Build a 12V to 220V 60Hz 500W inverter using IR2153D and PCB. Learn the circuit design, components, and operation of this efficient DC to AC power converter.

### [12V to 220V 500W Inverter 60Hz with IR2153D IC + PCB](#)

Build a 12V to 220V 60Hz 500W inverter using IR2153D and PCB. Learn the circuit design, components, and operation of this efficient DC to AC power converter.



### [Simple Inverters 12V to 220V, comparison, testing](#)

Simplest ways to make a 12V to 220V inverter, one with transistors and the other with Mosfets, and whether it is reasonable to make them. Find this and other hardware projects on ...

### [12V to 220V Inverter Using IR2153 With Casing](#)

12V to 220V Inverter Using IR2153 With Casing: In this tutorial we will show you how to make simple IC based inverter circuit. You can watch the video which is embedded in this step for construction, parts ...



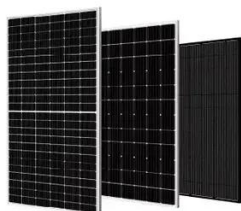


## How to make Simple Inverter 220V, Half Bridge, IGBT, powerful output

Unveiling the Secrets , How to turn inductor and IGBT into powerful 220V INVERTER This 12V DIY Spot Welder Is So Good It Looks Professional! - Go DIY Now

## [How To Build 12V DC To 220V AC 35W Inverter Circuit](#)

In this tutorial, we will be going to learn how to build a simple 12V to 220V 35W inverter circuit. Inverters are often needed at places where load shedding is a common problem.



## Complete Guide to Building a DC to AC Inverter Circuit: 12V to 220V

This comprehensive guide will walk you through the theory, components, design considerations, and step-by-step construction of a reliable 12V to 220V inverter circuit.

## Designing Switching Mechanism with Step Up Transformer for Square ...

This inverter circuit is cheap and easy to design and can be used with the low sensitive devices like heaters, lighting systems and with motors which does not have windings.



## How To Make 12v DC to 220v AC



## Converter/Inverter Circuit Design?

Here, a simple voltage driven inverter circuit using power transistors as switching devices is build, which converts 12V DC signal to single phase 220V AC. Outline



## Push-Pull Inverter 12V to 220V

This circuit is specifically designed to convert 12V DC into 220V DC, making it suitable for powering devices with AC input that internally use a bridge rectifier, such as power supplies, phone chargers, ...



## [12v DC to 220v AC inverter circuit using TL494 IC](#)

This inverter circuit is suitable for applications requiring high efficiency DC to AC conversion, such as power backup systems or off grid energy solutions. The use of high frequency ...





## Contact Us

---

For catalog requests, pricing, or partnerships, please visit:

<https://id2market.eu>

Phone: +34 910 56 87 45

Email: [info@id2market.eu](mailto:info@id2market.eu)

Scan the QR code to access our WhatsApp.

