



# 12v inverter connected to 24 volts





## Overview

---

A 12V inverter cannot run on a 24V battery. This setup may cause immediate failure and void the warranty. Correct compatibility is essential for reliable electrical. Success: The short answer: you can connect a 24 volt inverter to a 12 V system only by doubling the battery voltage (series wiring or a DC-DC step-up). In this guide, we'll unpack why the mismatch hurts. Powering a 12V inverter with 24V batteries?

Does anyone know if they make something like a 24V to 12V buck converter that can handle the amperage to run say a 2000 watt load max but say a sustained load of 600 watts. While the idea seems convenient, it's not as simple—or safe—as it might appear. Using mismatched voltage in power. I am using a Victron 150/60 Smart Charger powered by 2 x 450W solar panels. 2 LIFEP04 batteries making 24V and 200A total.



## 12v inverter connected to 24 volts

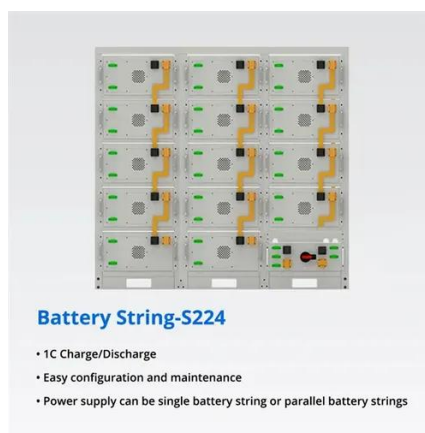


### Can You Use a 24 volt inverte With a 12V Battery System?

Directly hooking one 12 V battery to a 24 volt inverter will not work and may damage the gear. In this guide, we'll unpack why the mismatch hurts, safe workarounds, gear lists, cost math, ...

### **Basic: Can I Use a 24V Inverter in a 12v Solar Battery system**

Now, the big question: Can you use a 24V inverter on a 12V battery? The short answer is no, and here's why. A 24V inverter is specifically designed to work with a 24V battery bank. Plugging ...

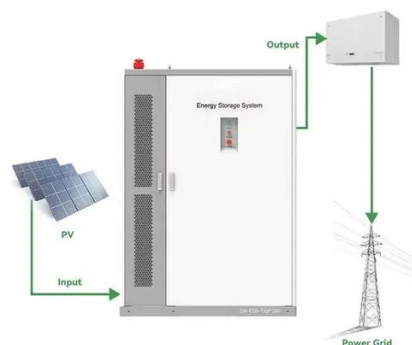


### 12V vs 24V Inverter: What's The Difference & Which is ...

Torn between 12V and 24V inverters? Discover the key differences in efficiency, cost, and power capacity to determine which is better for your energy needs.

### Powering a 12V inverter with 24V batteries?

Powering a 12V inverter with 24V batteries? Does anyone know if they make something like a 24V to 12V buck converter that can handle the amperage to run say a 2000 watt load max but ...



### will a 12v inverter run off 24v batteries

In conclusion, while it is possible to use a 12V inverter with 24V batteries, there are compatibility concerns and challenges that need to be carefully addressed. Using a voltage converter can enable ...

### how to use 12V inverter on 24 volt (2 battery) system

Option 1: keep the 24v, sell the inverter and buy a 24v one. Option 2: make the entire system 12V. If you don't have more parts connected, it's as simple as connect the battery in parallel and connect ...



### **Can I Use a 24V Inverter with a 12V Battery? Compatibility and**

To use a 24V inverter with a 12V battery, you can connect two 12V batteries in series. Connecting batteries in series effectively doubles the voltage, providing 24 volts to the inverter. ...

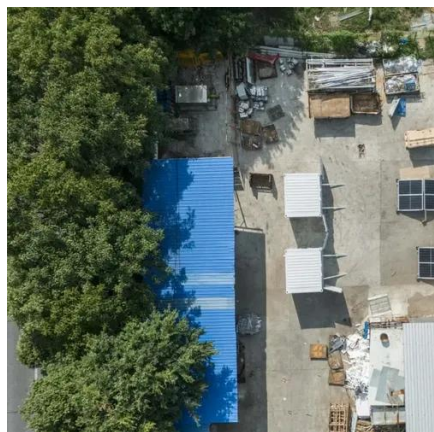


### **Can I Run A 12V Inverter On A 24V**



## Battery? Solutions And Best ...

To use a 12V inverter with a 24V battery, you would need a voltage converter or a different inverter designed for 24V systems. These solutions can help convert the excess voltage into a ...



## Can I Put 24 Volts into a 12 Volt Inverter?

Conclusion: Under no circumstances should you feed 24 V DC directly into a 12 V inverter. This mismatch results in component destruction, safety hazards, and voided warranties. If you must use a ...

## Can I Use 24V Inverter with 12V Battery

Using an inverter with a matched voltage level to your battery is essential for efficient power conversion. A 24V inverter inherently anticipates a 24V input. Using a 12V input could result in ...





## Contact Us

---

For catalog requests, pricing, or partnerships, please visit:

<https://id2market.eu>

Phone: +34 910 56 87 45

Email: [info@id2market.eu](mailto:info@id2market.eu)

Scan the QR code to access our WhatsApp.

