

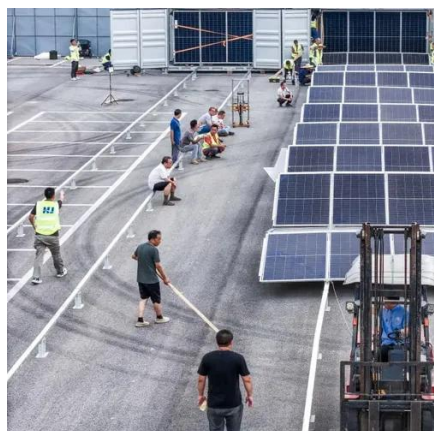


# 12v solar container lithium battery pack can be used in parallel





## 12v solar container lithium battery pack can be used in parallel



### [Parallel Connection of 12V Solar Batteries](#)

When multiple 12V batteries are connected in parallel, their positive terminals are connected together, and their negative terminals are also connected together. This configuration ...

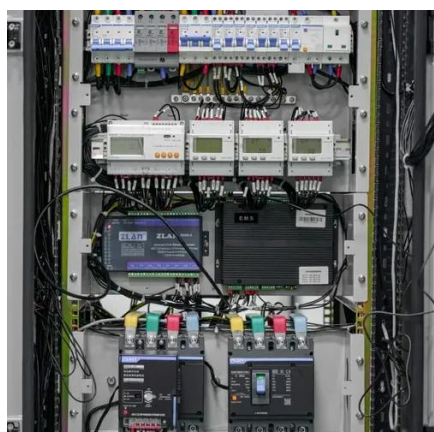
### Can I connect multiple 12V 7Ah LiFePO4 batteries in parallel?

As a supplier of 12V 7Ah LiFePO4 batteries, I often get asked whether it's possible to connect multiple 12V 7Ah LiFePO4 batteries in parallel. The short answer is yes, you can connect ...

#### Commercial and Industrial ESS

Air Cooling / Liquid Cooling

- Budget Friendly Solution
- Renewable Energy Integration
- Modular Design for Flexible Expansion



### [12V LiFePO4 Battery Series vs Parallel Wiring Guide](#)

Learn how to wire a 12V LiFePO4 battery bank safely with clear steps and tips for series and parallel connections to boost your system's power.

### [How To Make A Parallel Battery Connection Safely?](#)

Parallel battery connections combine two or more batteries to increase capacity (Ah) while maintaining the same voltage. Safe setups require identical batteries matched in voltage, chemistry,

...

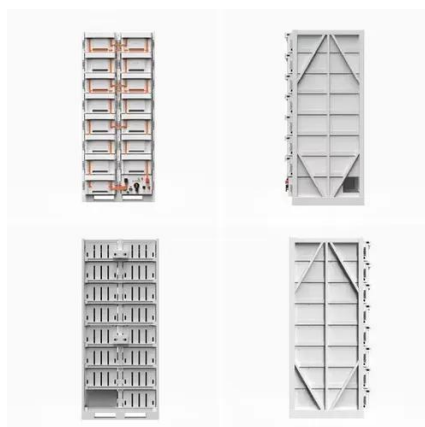


## [Can You Mix Different Capacity Lithium Batteries?](#)

A comprehensive guide to mixing different capacity lithium batteries. Dive into the crucial aspects of voltage, BMS, fuses, and more.

## [Lithium Solar Batteries Series vs Parallel Connection](#)

Is it better to use series or parallel connections for solar storage? It depends on your specific needs; use series for higher voltage requirements and parallel for increased capacity.



## **Is It Safe to Wire Three 12V Batteries in Parallel for a Solar System**

In short, the answer is yes; you can Wire three 12V batteries in parallel and, with a few guidelines, boost the amp hour capacity of your system. Just remember to follow a few rules.

## [Batteries in Series vs Parallel: Understand](#)



## The Differences

For example, a typical setup might include two 12V batteries in parallel for engine starting and house loads, with an additional 12V battery in series to provide 24V for certain equipment.



### **It's Possible to Parallel LiFePO4 battery cells with Different**

It is possible to connect LiFePO4 battery cells of different capacities in parallel to expand their capacity. In fact, when they are connected in parallel, each group is sharing the current demand ...

### **Correct setup for two 12V 400Ah LiFePo4 Batteries in Parallel**

For full charge and balance the absorption mode should be set to last for at least 20 minutes per battery for multiple batteries in parallel. Float: LiFePo4 batteries do not need a float ...





## Contact Us

---

For catalog requests, pricing, or partnerships, please visit:

<https://id2market.eu>

Phone: +34 910 56 87 45

Email: [info@id2market.eu](mailto:info@id2market.eu)

Scan the QR code to access our WhatsApp.

