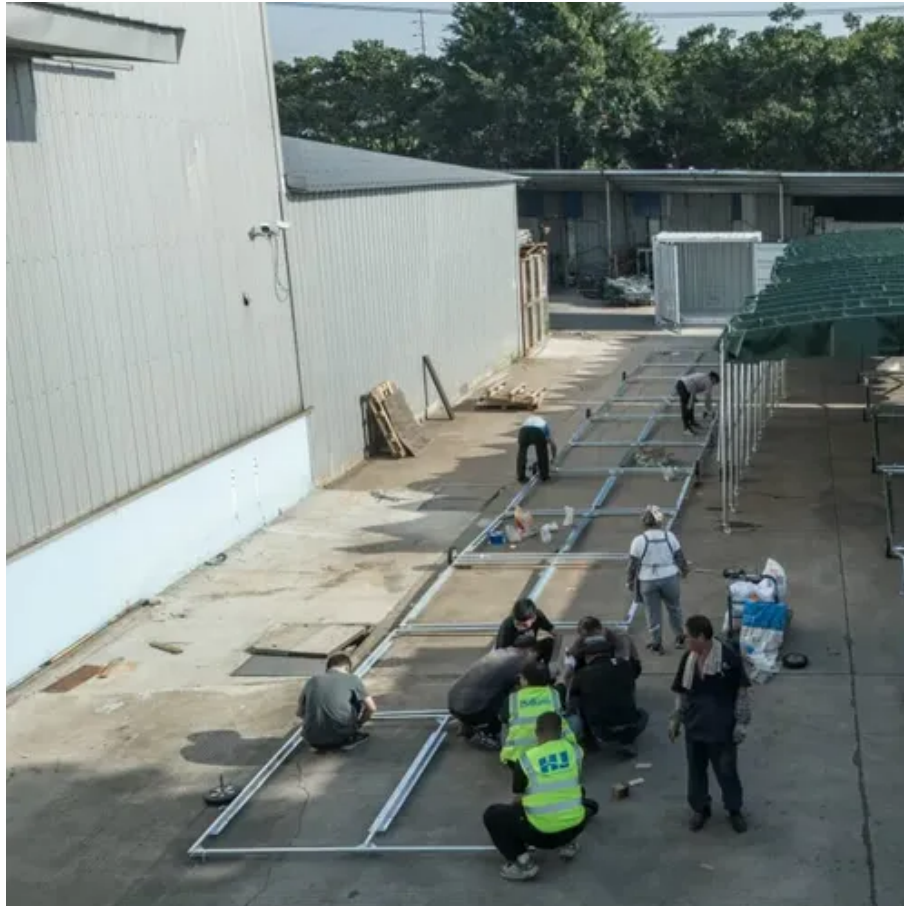




2mw wind power generation efficiency





Overview

Guarantee design of high efficiency power generation performance: 1. Blade components have excellent aeroperformance, and the swept area per kilowatt is larger than that of conventional models; 2. The platform's predictability means cheaper costs and minimal downtime, making it one of the most trusted in the industry. Explore the variants: Introduced in 2000 and. The efficiency of a turbine varies based on several factors, including wind speed, turbine design, location, and grid integration. Despite these fluctuations. (at a 2. Configured for medium wind speeds, the 2. 4MW turbine provides a 51% increase in swept area with the 107-meter rotor, and an extra 350-450 kW output at rated wind speed compared to the 1. The wind generators can be produced with rotor diameters of 87 / 93 / 99 / 105 / 111/116 meters. 5942/6789/7693/8659/9677/10565. 2MW power level, 80 ~ 140m tower and 103 ~ 131m rotor diameter for different wind resource areas, and pursues the balance between unit reliability and optimal power.



2mw wind power generation efficiency



GE's 2MW Platfo

2.0-2.4 MW Platform GE's 2.2-2.4MW, 107m rotor wind turbine is an advanced evolution of the 1.x series, providing an up to 35% increase in Annual Energy Production (AEP) over its predecessor, the ...

[2MW Series Wind Turbine , Wind Power Generation Equipment](#)

Following the ISO12944 standards, according to the wind field environment. 2MW series wind turbines are double-fed, variable pitch windmills. It can be produced with different rotor diameters. This allows ...



2mw wind power generation

This paper describes the engineering design of the domestic first 2MW direct-drive PMSG system, including optimal machine design, converter topology choosing and its control.

Evaluation of the Power Output Performance Improvement of a 2 ...

In this paper, a 2 MW wind turbine with different design and operating parameters like blade efficiency, wind direction alignment, high/low wind control strategy has been evaluated, then with the software ...



[How Efficient Are Wind Turbines in 2025? Explained](#)

This guide provides a data-driven comparison of wind turbine efficiency against solar power and fossil fuels, exploring cost-effectiveness, capacity factors, and technological innovations shaping the future ...



[2MW Wind Turbine: Advanced Renewable Energy Solution for ...](#)

Discover the innovative 2MW wind turbine featuring direct drive technology, intelligent control systems, and superior economic benefits. Learn how this advanced renewable energy solution delivers ...



WT2000 2MW series wind turbines

A large number of units have been installed and operated in Hunan, Hubei, Yunnan, Guizhou, Gansu and Ningxia. The maturity and reliability of this platform have been fully verified, and the operation ...



[2mw wind turbine power generation cost](#)



This report uses representative utility-scale and distributed wind energy projects to estimate the levelized cost of energy (LCOE) for land-based and offshore wind power plants in the United



Wind turbine power generation efficiency

Measure the power generation efficiency, wind energy utilization coefficient, blade angle, generator speed and other parameters of the wind turbine at different wind speeds to ...

2 MW Platform

The platform's predictability ensures it can forecast confidently, strengthening the business case for investment, while the tried-and-tested design produces energy on ultra-low, low, medium and high ...



© 2014 - 2015



Contact Us

For catalog requests, pricing, or partnerships, please visit:

<https://id2market.eu>

Phone: +34 910 56 87 45

Email: info@id2market.eu

Scan the QR code to access our WhatsApp.

