



3 Generator inlet air temperature high trip





Overview

Check if LT temperature is all right Exhaust temperature of individual unit to be checked Vent the system Check sensor Reasons: Pump Failure Oil pressure control valve of engine. Actions: Check above for the problem and rectify the same. This information discusses how very high ambient temperatures impact generator performance, service considerations to ensure reliabil ures design their equipment to operate in a wide range of temperatures. This article systematically analyzes the causes of high temperature and control mechanisms based on the GB/T 2820. Diesel Generator Alarms and Trips have been discussed in this article, which are common among all the generators. Following alarms we will mention Reasons: Actions.



3 Generator inlet air temperature high trip

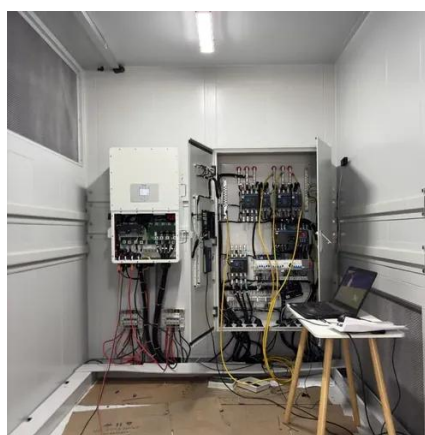


[The Impact of Air and Temperature on Diesel Generators](#)

Air and fuel are injected into the diesel engine together, compressed air becomes hot, and when the peak temperature and pressure are reached, diesel is injected and ignited under given ...

8 Tips For Running Industrial Generators in Extreme Temperatures

At temperatures above 104°F (40°C), diesel generators require derating -- a reduction in power output to prevent damage. Without proper management, high temperatures can lead to ...



Generator Inlet Air Temperature: The Invisible Hand Shaping Power ...

Let's face it - generators aren't exactly the life of the party in power plants. But when it comes to generator inlet air temperature, these machines turn into divas faster than a pop star in a heatwave. ...

Understanding the Effects of Elevated Temperatures on Generator

In this article, we will explore the impact of high temperatures on generators and discuss ways to prevent and manage these conditions for optimal generator performance.



Temperature rise of a coolant

I understand the concept of temperature rise in windings, but I'm unsure about the temperature rise in a generator's cooling system. There are two key temperatures involved: the ...

[Reasons for high generator air inlet temperature](#)

The P0127 code stands for "Intake Air Temperature Too High," which means the air temperature is higher than expected based on the sensor input. Some of the possible causes of the P0127 code ...



Preventing and Resolving High Temperature Issues in Diesel ...

This article systematically analyzes the causes of high temperature and control mechanisms based on the GB/T 2820 standard and industrial scenario field data, offering practical ...

Diesel Generator Alarms and Trips



Diesel Generator Alarms and Trips have been discussed in this article, which are common among all the generators. We will take some of the major alarms and trips.



[The hazards of excessively high generator air temperature](#)

This information discusses how very high ambient temperatures impact generator performance, service considerations to ensure reliability, and changes that may have to be made to existing

High Ambient Temperature Effects on an Engine/Generator System

If an existing generator installation starts to have problems related to very high ambients, after all the usual factors have been eliminated, a review of the installation itself should be made including:





Contact Us

For catalog requests, pricing, or partnerships, please visit:

<https://id2market.eu>

Phone: +34 910 56 87 45

Email: info@id2market.eu

Scan the QR code to access our WhatsApp.

