



540 double glass solar panel size





Overview

2 mm AR-coated tempered-glass front, 5 400 Pa front-load rating, and anodised aluminium frame make it suitable for Indian wind-, dust- and hail-prone sites. The SolarSpace SS8-72HD-540M is a bifacial dual-glass solar module featuring Mono PERC M10 half-cut cells and advanced encapsulation for superior output. MBB reserves the right of interpretation. Series Fuse Rating II Fire Rating Bifaciality Max. Static Load(Back) . al conditions. Whether you are EPC, installer, contractor, or project developer, we have the right and better PV module for your residential, commercial, industrial, and utility scale x 1. No contractual rights are established or should be inferred because of the. High Efficiency Monocrystalline Perc Bifacial Double Glass Photovoltaic Solar Panel Module Based on 182mm Solar Cell Mogen Solar MG10 Perc monocrystalline single glass 540-555Watt photovoltaic solar panel. The new series integrates 182mm silicon wafers, with perc, multi-busbar cell technology and. 144 half-cell bifacial double glass solar panel designed for large free-field photovoltaic systems, optimized for long-term reliability and performance. Up to 25 Years Product Guarantee for the EU and several other countries: 25 years for modules installed on rooftops and 15 years for non-rooftop. 540w Mono Solar Panel Features MONO half-cut / double glass module, assembled with multi-busbar PERC technique and half-cut structure, which can not only absorb the energy from the front of the module, but also absorb the reflected light and the scattered light from the back, offer the advantages.



540 double glass solar panel size



Monocrystalline Solar Panel 540 WP

The 540 watt solar panel is one of the best-rated solar panels, with high-quality 'A' grade solar cells and ultra-clear tempered glasses that are not easily broken.

Bluebird 540 Watt Half Cut Solar Panels

A 540W Half-Cut Solar Panel refers to a photovoltaic panel that has a power output of 540 watts and employs a "half-cut" cell design. In a half-cut design, the solar cells on the panel are divided into two ...

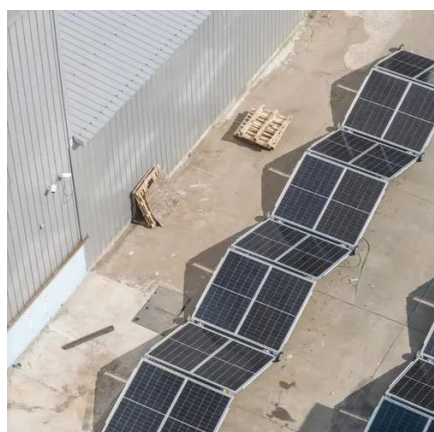


BiMAX5 SP560M-72H 540-560W Bifacial Double Glass Solar Panel

Bifacial technology enables additional energy harvesting from rear side (up to 25%) Glass/glass lamination ensures 30 year product lifetime, with annual power degradation < 0.45%, 1500V ...

Sunpal MBB Double Glass 540W 550W 560W PV Module With Good ...

The PERC BiMAX5 series offers a power range from 440W to 605W, making it suitable for a wide range of residential, commercial and industrial solar applications.



VEGA SERIES

BUILT TO LAST Our PV modules are designed with better technology in mind, made from robust product components, under stringent quality control steps and high-tech manufacture.

SolarSpace 540W (Pallet of 36) Bifacial Solar Panels SS8-72HD-540M

Delivering 540W front-side power and up to 675W with bifacial rear-side gain, it's ideal for utility-scale projects seeking high ROI and long-term durability. High Power Output: 540W nominal power and ...



[WAAREE 540Wp 144 Cells 24 Volts Mono PERC Solar Module](#)

A large-format, 144 half-cut M10 mono-PERC module delivering 540 W (STC) at ~21 % efficiency. It's built on Waaree's Tier-1, ALMM-listed production line, carries a 1500 V DC rating for long strings, ...



MONO Solar Panel, 540W Solar



Module, Double Glass Module 540w

New Arrival MONO Half-Cut / Double Glass Module 540w Mono Solar Panel 1.High module conversion efficiency up to 21.38% by using innovative Half-cell design and Multi-busbar (MBB) cell technology. ...

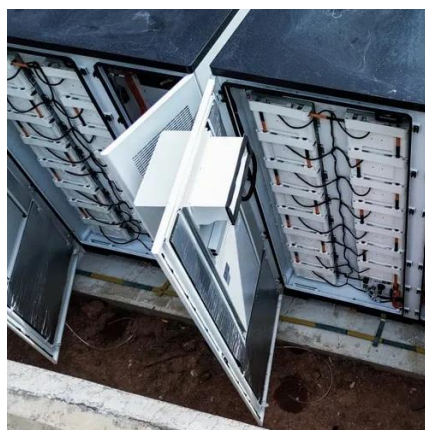


Perc 550W 540W single glass / Dual glass bifacial mono solar module

Mogen Solar MG10 Perc monocrystalline single glass 540-555Watt photovoltaic solar panel. The new series integrates 182mm silicon wafers, with perc, multi-busbar cell technology and high-density ...

Sharp 540 Wp / Mono: NBJD540

Sharp 540 Wp / Mono: NBJD540 144 half-cell bifacial double glass solar panel designed for large free-field photovoltaic systems, optimized for long-term reliability and performance.





Contact Us

For catalog requests, pricing, or partnerships, please visit:

<https://id2market.eu>

Phone: +34 910 56 87 45

Email: info@id2market.eu

Scan the QR code to access our WhatsApp.

