



575 Rated current of solar panel





Overview

Panels rated at 575 watts are ideal for space-constrained rooftops or large-scale installations needing fewer units for higher energy yields. The Wattage rating of a solar panel is the most fundamental rating, representing the maximum power output of the solar panel under ideal conditions. You'll often see it referred to as "Rated Power", "Maximum Power", or "Pmax", and it's measured in watts or kilowatts peak (kWp). For example, the. Each PV cell produces anywhere between 0.6V, according to Wikipedia; this is known as Open-Circuit Voltage or V_{OC} for short. 58 volts (at 77°F or 25°C). Maximum Power Current (I_{mp}): The current at your panel's most efficient operating point. These estimations can be derived.



575 Rated current of solar panel



Solar Panel NCTS-SP575WM data sheet

FZS1BL01 , Jebel Ali Freezone , Dubai , UAE , P.O. Box 17000 , e-mail: info@ncts

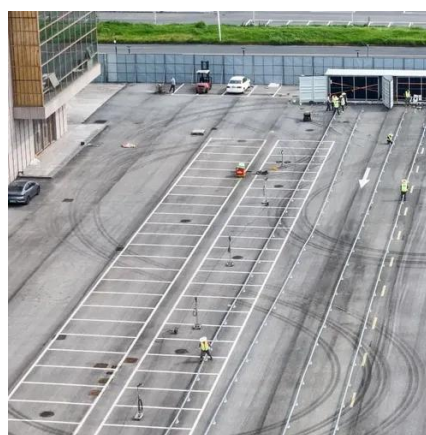


Solar Panel Ratings Explained - Wattage, Current, Voltage, and

The Maximum Power Current rating (I_{mp}) on a solar panel indicates the amount of current produced by a solar panel when it's operating at its maximum power output (P_{max}) under ...

Understanding Solar Panel Voltage and Current Output

Decode solar panels specifications to safely connect your panels to power station or charge controller. This quick guide unlocks full solar potential.



Solar Panel Power Calculator

Solar Panel Calculator is an online tool used in electrical engineering to estimate the total power output, solar system output voltage and current when the number of solar panel units connected in series or ...



Power Maxma , Topcon, N-type 555-575W , Solar Panel Datasheet

Power Maxma Solar Panel Series Topcon, N-type 555-575W. Detailed profile including pictures, certification details and manufacturer PDF.

JINKO 575W

With its excellent performance, extended warranty, and ease of installation, it is an ideal choice for those seeking a reliable and efficient solar power solution. Investing in these panels will ensure significant ...



[Jinko N-Type Bifacial 575watt Solar Panel](#)



Maximum Power Output (Pmax): 575 W Module Efficiency: 22.26% Cell Type: N-Type Monocrystalline (TOPCon) Cell Configuration: 144 half-cut cells (6 × 24) Open Circuit Voltage (Voc): Approximately ...

PVWatts Calculator



NREL's PVWatts[®] Calculator Estimates the energy production of grid-connected photovoltaic (PV) energy systems throughout the world. It allows homeowners, small building owners, installers and ...

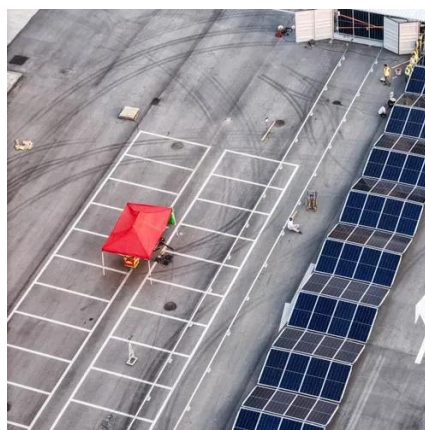


Solar Panel Output Voltage: How Many Volts Do PV Panel Produce?

To be more accurate, a typical open circuit voltage of a solar cell is 0.58 volts (at 77°F or 25°C). All the PV cells in all solar panels have the same 0.58V voltage. Because we connect them in series, the ...

How to Choose the Best 575W Solar Panel: A Complete Buying Guide

Discover what to look for in a 575W solar panel, from efficiency and durability to pricing and top models. Make an informed decision today.





Contact Us

For catalog requests, pricing, or partnerships, please visit:

<https://id2market.eu>

Phone: +34 910 56 87 45

Email: info@id2market.eu

Scan the QR code to access our WhatsApp.

