



5kW GoodWe PV Inverter





5kW GoodWe PV Inverter



[GoodWe Inverters: An Independent Review by Solar Choice](#)

Read our professional GoodWe inverter review. Find out about their history, product features and limitations in our independent review.

5kW Goodwe Grid-tied Inverter

The Goodwe GW5000A-MS is a single-phase, grid-tied PV inverter that delivers 5,000 watts of continuous AC output power at 240 household volts. Capable of receiving 7,500 watts of DC solar ...



ET LV Series

The GoodWe ET LV Series inverter (5-20kW) is ideal for residential PV systems, offering seamless integration with low-voltage (48V) batteries. Designed for flexibility, it supports a wide range of ...

[GW5000-SDT-20 GOODWE Three-phase 5kW Inverter](#)

The GOODWE 5kW GW5000-SDT-20 three-phase grid-tie inverter is the preferred choice for residential photovoltaic systems. With two integrated MPPTs on board, which allow the management of two ...



MS Series-GoodWe MS Series 5-10KW Split Phase 3 MPPT Inverter ...

GoodWe MS Series is 5-10 kW single phase 3 MPPTs residential solar inverter. Ideal to generate electricity earlier than equivalent products with bifacial modules. Compatible with bifacial modules ...



Goodwe 5kW On Grid Solar Inverter

Goodwe 5kW On Grid Solar Inverter Specs: Max efficiency 98.0%: Optimal energy conversion for maximum power utilization. Nominal output power 5000W: Meets residential and ...



GoodWe 5kW Single Phase EH PLUS SERIES Solar Hybrid Activated Inverter ...

About This Product The GoodWe 5kW Single Phase EH PLUS SERIES Solar Hybrid Activated Inverter IP65 is a single-phase hybrid inverter designed to work with high-voltage lithium batteries. It supports ...



[GoodWe GW5000-DNS-30 , 5kW Dual-MPPT Grid-Tied PV Inverter](#)

The GoodWe GW5000-DNS-30 is a high-performance 5kW residential solar inverter designed for efficient energy conversion. It features dual MPPT trackers, allowing for flexible solar panel ...

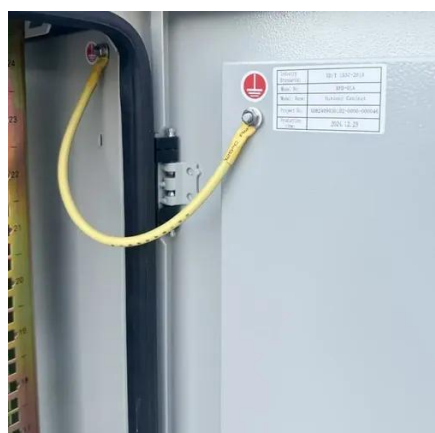


[Inverter Hybrid GoodWe ES G2 5kW 1 Phase](#)

The GoodWe GW5000-ES-20 inverter, with a capacity of 5kW, is a single-phase Hybrid Inverter designed to enhance self-consumption of solar energy generated, intelligently controlling ...

[GoodWe GW5000-DNS-30 , 5kW Dual-MPPT Grid ...](#)

The GoodWe GW5000-DNS-30 is a high-performance 5kW residential solar ...



[GoodWe 5kW Single Phase EH PLUS SERIES Solar ...](#)

About This Product The GoodWe 5kW Single Phase EH PLUS SERIES Solar ...

5kW Goodwe Inverters



Goodwe 5kW solar inverters are increasingly becoming a cornerstone of energy strategy for small to medium-sized commercial enterprises. Their compact size, high efficiency, and advanced features ...





Contact Us

For catalog requests, pricing, or partnerships, please visit:

<https://id2market.eu>

Phone: +34 910 56 87 45

Email: info@id2market.eu

Scan the QR code to access our WhatsApp.

