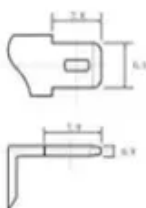
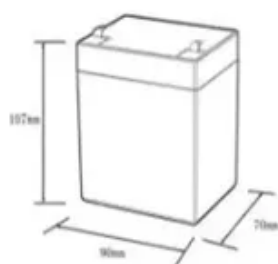




625w photovoltaic panel size

12.8V6Ah



- Nominal voltage (V):12.8
- Nominal capacity (ah):6
- Rated energy (WH):76.8
- Maximum charging voltage (V):14.6
- Maximum charging current (a):6
- Floating charge voltage (V):13.6–13.8
- Maximum continuous discharge current (a):10
- Maximum peak discharge current @10 seconds (a):20
- Maximum load power (W):100
- Discharge cut-off voltage (V):10.8
- Charging temperature (°C):0~+50
- Discharge temperature (°C): -20~+60
- Working humidity: <95% R.H (non condensing)
- Number of cycles (25 °C, 0.5c, 100%dod): >2000
- Cell combination mode: 32700-4s1p
- Terminal specification: T2 (6.3mm)
- Protection grade: IP65
- Overall dimension (mm):90*70*107mm
- Reference weight (kg):0.7
- Certification: un38.3/msds





Overview

Dimensions: 2465×1134×30 mm, precisely engineered for efficient solar panel installation. improve module power output and reliability. Model: 78HL4-BDV . The QCELLS Q. This module combines advanced Q. ANTUM NEO technology with bifacial design, delivering exceptional energy yield and efficiency. With. Shiban Energy's "Shiban PowerMax 625" sets a new standard in the realm of solar panel technology, offering an advanced solution for both residential and commercial solar power systems. This product epitomizes our dedication to providing sustainable energy solutions through innovative renewable. Jinko 625W solar panel, which is monocrystalline, is considered to be one of the best solar modules available. Also, the Jinko 625W solar panel is a premium quality module with dimensions of 2465x1134x35 mm and an impressive module. 625W standard plus solar panel for various applications.



625w photovoltaic panel size



Shiban PowerMax 625 - Shiban Energy

Dimensions: 2465×1134×30 mm, precisely engineered for efficient solar panel installation. Weight: A well-balanced 34.6 kg, ideal for both residential and commercial installations.



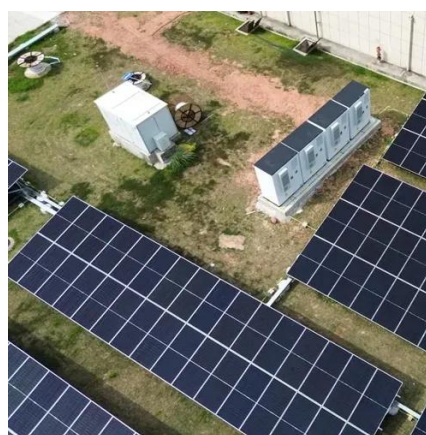
- IP65/IP55 OUTDOOR CABINET
- OUTDOOR MODULE CABINET
- OUTDOOR ENERGY STORAGE CABINET
- 19 INCH

[JA Solar - 625W Bifacial Solar Panel - JAM66D45-625/LB](#)

Built with bifacial technology, this solar module captures sunlight from both the front and rear sides, improving total energy yield and system efficiency.

Jinko Solar Panel 625W

Monocrystalline solar panels have higher efficiency and durability. Also, the Jinko 625W solar panel is a premium quality module with dimensions of 2465x1134x35 mm and an impressive module efficiency rate of ...



[Canadian TOPCON N-Type Bifacial 625watt Solar Panel](#)

Maximum Power Output (Pmax): 625W Module Efficiency: 23.1% Cell Configuration: 132 half-cut N-type TOPCon monocrystalline cells Open Circuit Voltage (Voc): Approximately 52.4V Short Circuit Current (Isc): ...



[EN-192 72-AIKO-G-MAH72Mw 625-660W \(2382x1134x35mm\) ...](#)

Optimized Balance of System (BOS) Significant savings on mounting structure, cabling, labour cost



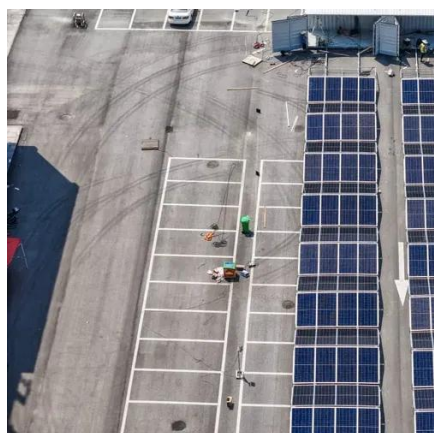
625W Solar Panel

Model: 78HL4-BDV.



[JA 600Watt 610Watt 625 Watt Bifacial Mono Solar Panel](#)

600~625W Bifacial JAM78D42 MB Cells Layout: 144 Half Cells (6x24) Dimensions: 2465x1134x35mm Weight: 34.6kg Modules per box: 31pcs Modules per 40' container: 496pcs



TW Solar Panel 625w Bifacial N-Type



TW Solar 625W Standard Plus panel, identified as the TWMND-78HD625, is a high-performance bifacial N-type TOPCon module designed for both residential and commercial applications.



[QCELLS Q.TRON XL-G2.3/BFG 625W Bifacial Solar Module](#)

The QCELLS Q.TRON XL-G2.3/BFG 625W N-Type Bifacial Solar Module is a high-performance solar panel designed for commercial, industrial, and utility-scale applications. This module combines advanced ...

[JAM72D42625/LB 625W Solar Panel Information](#)

See the table below for available information we have about Shanghai JA Solar Technology Co Ltd JAM72D42625/LB solar panels. We do our best to provide information such as the JAM72D42625/LB panel ...





Contact Us

For catalog requests, pricing, or partnerships, please visit:

<https://id2market.eu>

Phone: +34 910 56 87 45

Email: info@id2market.eu

Scan the QR code to access our WhatsApp.

