



# 660wp monocrystalline silicon bifacial single-cell solar module installation





## Overview

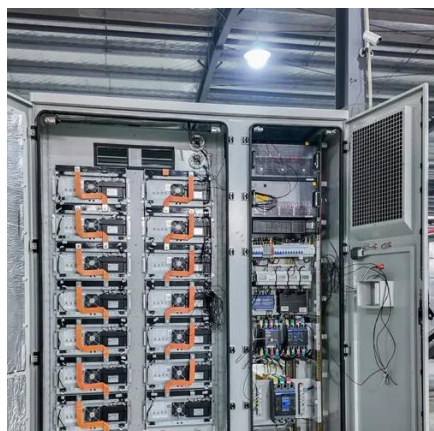
---

Detailed profile including pictures, certification details and manufacturer PDF.  
Detailed profile including pictures, certification details and manufacturer PDF.  
Product Documentation Certifications & Qualifications Questions about this product?

. STC: Irradiance 1000W/m<sup>2</sup>, Cell Temperature 25°C, Air Mass AM1. \*Measuring tolerance: ±3%. NOCT: Irradiance at 800W/m, Ambient Temperature 20°C, Wind Speed 1m/s. CAUTION: READ SAFETY AND INSTALLATION INSTRUCTIONS BEFORE USING THE PRODUCT. 2021 Trina Solar Limited, All rights. Boviet Solar's Vega Series™ Mono-Bifacial solar modules are distinguished by their advanced technology, exceptional quality, and unwavering reliability. Utilizing cutting-edge monocrystalline PERC solar cell technologies, our modules deliver superior power, performance, and efficiency. Each module. Trina manufactures the model 660Wp-TSM-DEG21C-20 in China. This model belongs to the Vertex-Bifacial series and will not be eligible for PM Surya Ghar subsidy program since solar cells are imported Contact the nearest installer by your PIN CODE. Built for utility and large commercial projects, it supports.



## 660wp monocrystalline silicon bifacial single-cell solar module install



### Trina Solar TSM-660DEG21C.20

The Trina Solar TSM-DEG21C.20-660 is a high-power bifacial dual-glass module using monocrystalline high-density-interconnect cells, delivering 660 Wp with a module efficiency of 21.2%; it measures 2384 × 1303 × ...

### [660W Datasheet\\_Vortex\\_DE21\\_EN\\_2020\\_PA4\\_web](#)

STC: Irradiance 1000W/m<sup>2</sup>, Cell Temperature 25°C, Air Mass AM1.5. \*Measuring tolerance: ±3%.  
NOCT: Irradiance at 800W/m, Ambient Temperature 20°C, Wind Speed 1m/s. ed connector. CAUTION: READ ...



### [Trina Solar Monocrystalline Module Specs](#)

The document provides information about a monocrystalline solar module. It details the product name and power range, maximum power output and tolerance, efficiency rating, and highlights high customer value, ...

### [Trina 660Wp Vortex-Bifacial bifacial solar panel](#)

660 Watt Trina solar panel with 21.2% efficiency, Mono PERC cell, 30 year warranty. Get quote from nearest installer!



[DT-M-0012 C](#)  
[Datasheet\\_Vertex\\_DE21\\_EN\\_2023\\_A\\_web](#)

CAUTION: READ SAFETY AND INSTALLATION INSTRUCTIONS BEFORE USING THE PRODUCT. 2023Trina Solar Co.,Ltd. All rights reserved. Specifications included in this datasheet are subject to change without ...



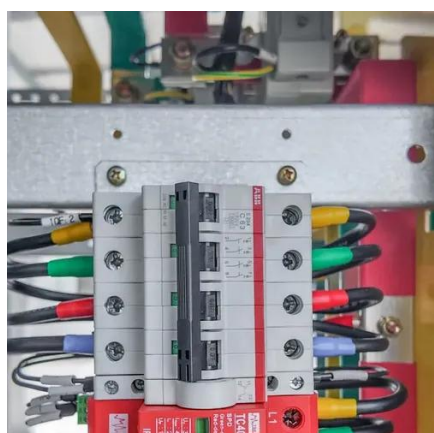
[Sunergy Solar , MONO650W-660Wp-670 Watt -700Wp ...](#)

Detailed profile including pictures, certification details and manufacturer PDF.



**Mono PERC Bifacial Double Glass Photovoltaic Solar Panel 650Watt ...**

Based on 210mm silicon wafer and 132 half-cut mono-crystalline PERC cell, the Evo 6 Series photovoltaic panels comes with several innovative design features allowing higher output power up to 670W. Excellent ...



[Solar Panel Bifacial Half-cut](#)



## Monocrystalline 660 Wp

In Stock Strengths Lower LCOE (Levelized Cost of Energy), reduced BOS (Balance of System) cost, shorter payback time Up to 21.5% module efficiency with high density interconnect technology Minimized micro ...



## **Ac Module Longi Mono Crystalline 500Wp 550Wp 660Wp High Wattage Solar**

We have the ability to provide customized design and supporting capabilities for various solar systems, such as commercial and home off-grid solar systems, hybrid solar systems, grid-connected solar systems, solar ...

## **Mono-Bifacial , Boviet Solar**

Boviet Solar's Vega Series(TM) Mono-Bifacial solar modules are distinguished by their advanced technology, exceptional quality, and unwavering reliability. Utilizing cutting-edge monocrystalline PERC solar cell ...





## Contact Us

---

For catalog requests, pricing, or partnerships, please visit:

<https://id2market.eu>

Phone: +34 910 56 87 45

Email: [info@id2market.eu](mailto:info@id2market.eu)

Scan the QR code to access our WhatsApp.

