

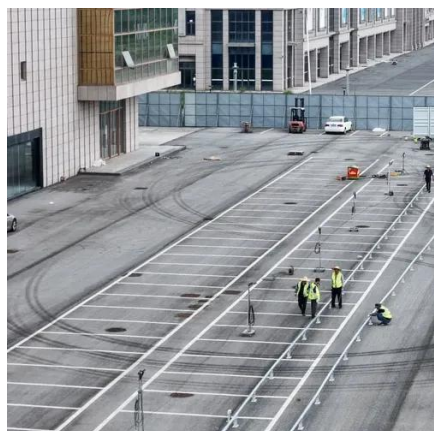


690V Server Rack Project for Power Plants





690V Server Rack Project for Power Plants



5 kW GaN-Based AC/DC Reference Design for AI Server and Data ...

The EPC 5 kW reference design supports a modular power architecture scalable to 33 kW, 48 kW, and as high as 108 kW rack systems for less cost, delivering industry-leading efficiency ...

[Utility-Scale Power Conversion Solutions , EPC Power](#)

The CAB1000 is a scalable power inverter that provides reliable energy conversion for applications of any size. Designed for both UL and IEC markets, it's the easy-to-use building block that gets your ...



[M: One Inverter for All Uses , EPC Power](#)

The modular M System offers a scalable building block for systems of all sizes, combining world-class power density with an easy-to-install design. Built in the USA with cutting-edge silicon carbide ...

[Technical Information and Documentation , EPC Power](#)

Download product specifications, learn about our warranty details, and gain a deeper understanding of our commitment to quality and sustainability. The modular M System offers a scalable building block ...



EPC Projects in the Power Generation & Clean Energy ...

With our customized solutions for complex EPC projects in the power generation and clean-energy industry.



GaN-based DC/DC Conversion for Data Center ...

Design GaN-based DC/DC converters for your data center applications to improve power usage efficiency & see why EPC GaN products are the best in the market.



EPC Projects of Power Plants

Our scope of supply can range from individual gensets to complete, ready-to-run power plants based on full EPC (Engineering, Procurement, Construction). You can see an illustration of our EPC scope of ...



Power Plant EPC , Power Plant



Engineering

Power station study and upgrade completed at Golden Pride using Si-Tec controls to parallel a bank of 7 Detroit Engines to a bank of 7 Cummins engines.



Rack & Power

Conversion, Storage, and Control Systems of power between the data center infrastructure and the IT gear. Shelves, supports, sub-chassis, and adapters needed to implement IT gear



Contact Us

For catalog requests, pricing, or partnerships, please visit:

<https://id2market.eu>

Phone: +34 910 56 87 45

Email: info@id2market.eu

Scan the QR code to access our WhatsApp.

