



Are the cells of a solar panel connected in series





Overview

Solar panels wired in series are connected in a single string, with each panel's positive terminal linked to the next panel's negative terminal. This setup increases the system's total voltage while keeping the current the same. When wired in parallel, the amperage increases while the voltage stays the same, allowing you to. Even partial shading on one panel can reduce total string output by 30-50%, making series wiring best suited for installations with minimal shading throughout the day. A String of PV Modules When N-number of PV modules are connected in series. It is important to understand these two configurations as we have to estimate our home needs or power storage for.



Are the cells of a solar panel connected in series



Series, Parallel & Series-Parallel Connection of Solar Panels

Such a connection of modules in a series and parallel combination is known as "Solar Photovoltaic Array" or "PV Module Array". A schematic of a solar PV module array connected in series-parallel ...

Connecting Solar Panels in Series or in Parallel?

If you connect two identical solar panels together in series or parallel under laboratory conditions, the electricity output using either method will be virtually identical.



Solar Panels in Series vs. Parallel: 6 Difference and Which Is Better?

In a series connection, solar panels are linked end-to-end by connecting the positive terminal of one panel to the negative terminal of the next. This setup causes the voltage of each ...

Are Solar Panels Connected In Series Or Parallel?

Essentially, connecting solar panels in series is a strategy to boost voltage to meet specific requirements. Conversely, a parallel connection involves connecting all the negative terminals of the ...



[How To Wire Solar Panels In Series: Complete Guide 2025](#)

Wiring solar panels in series means connecting the positive terminal of one panel to the negative terminal of the next panel, creating a chain that increases total voltage while maintaining the ...

[Connecting Solar Panels in Series Vs Parallel](#)

A series connection of panels means batching of panels in a line in order of positive to negative. So, the solar array voltage increases but amperage remains the same.



Solar Panel Series Vs Parallel: Wiring, Differences, And Your Right

In this tutorial, I'll show you how to wire solar panels in series and how to wire them in parallel.

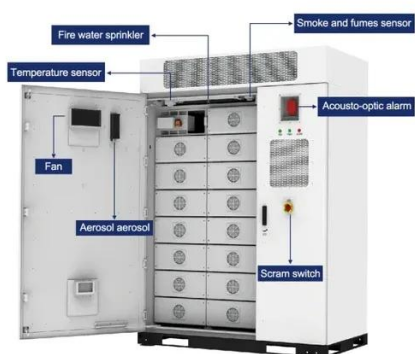
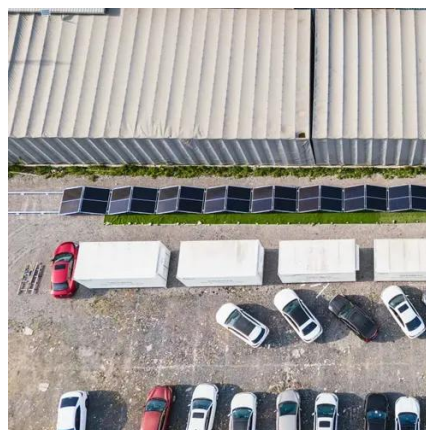


[Solar Panel Series vs Parallel: Which is](#)



Better?

Solar panels wired in series are connected in a single string, with each panel's positive terminal linked to the next panel's negative terminal. This setup increases the system's total voltage while keeping the ...



Are Solar Cells Connected In Series Or Parallel?

The cells in a solar panel are connected in a series circuit. The positive terminal of one cell is connected to the negative terminal of the next cell, and so on.



Contact Us

For catalog requests, pricing, or partnerships, please visit:

<https://id2market.eu>

Phone: +34 910 56 87 45

Email: info@id2market.eu

Scan the QR code to access our WhatsApp.

