



# Are there communications between the two base stations

20 ft container



40 ft container





## Overview

---

Line of sight refers to the unobstructed path between two base stations, allowing for direct communication and transmission of signals. This direct path ensures a strong and uninterrupted wireless connection, enabling the seamless transfer of data packets. It enables seamless communication by linking various wireless devices to broader networks, ensuring that data flows efficiently from one point to another.



## Are there communications between the two base stations



### Base Station's Role in Wireless Communication Networks

The base station transmits and receives signals, ensuring seamless communication over radio frequencies. In essence, it acts as the intermediary between the user and the network, enabling ...

### What Is A Base Station?

Overall, a base station acts as a bridge between mobile devices and the cellular network, enabling reliable and efficient wireless communication.



### DO Base Stations Need to See Each Other? The

Line of sight refers to the unobstructed path between two base stations, allowing for direct communication and transmission of signals. This direct path ensures a strong and ...

### Understanding Base Stations in Mobile Communication

They transmit and receive radio waves, thus facilitating communication between the base station and mobile devices. The type and design of antennas significantly affect coverage area and signal quality.



## Base station

Overview  
Wireless communications  
Land surveying  
Computer networking  
See also

In radio communications, a base station is a wireless communications station installed at a fixed location and used to communicate as part of one of the following:

- o a push-to-talk two-way radio system, or;
- o a wireless telephone system such as cellular CDMA or GSM cell site.



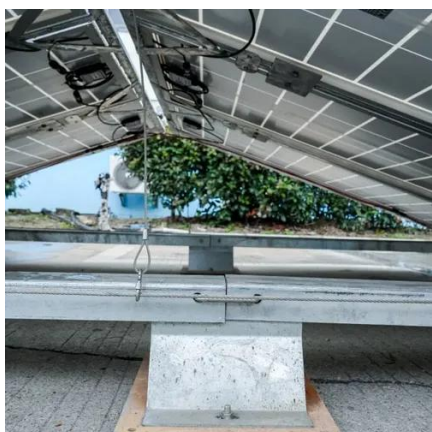
## Base station

In professional two-way radio systems, a base station is used to maintain contact with a dispatch fleet of hand-held or mobile radios, and/or to activate one-way paging receivers. The base station is one end ...



## [What is a Base Station in Telecommunications?](#)

Base stations are integral to the functioning of mobile networks, enabling devices to connect and communicate efficiently. What Does a Base Station do? Signal Transmission and Reception: The ...





## Base Stations and Cell Towers: The Pillars of Mobile Connectivity

Base stations use antennas mounted on cell towers to send and receive radio signals to and from mobile devices within their coverage area. This communication enables users to make ...

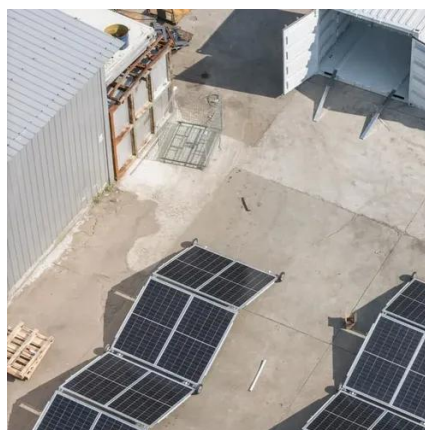


### What are Base Station in Telecommunications?

A base station connects your phone to the network. It acts as a hub between mobile devices and the core system.

### How do communication base stations work

Connected to a core network via backhaul links, base stations enable voice calls, messages, and data services, adapting to technological advancements to meet increasing demands.



### **Base Stations**

**Backhaul Connection:** The backhaul connection links the base station to the core network in the mobile communication system. It provides for the interchange of data between the base station ...



## Contact Us

---

For catalog requests, pricing, or partnerships, please visit:

<https://id2market.eu>

Phone: +34 910 56 87 45

Email: [info@id2market.eu](mailto:info@id2market.eu)

Scan the QR code to access our WhatsApp.

