



Base station power construction plan in winter and rainy season





Overview

With insights tailored to geographic needs and proven industry statistics, this white paper serves as a comprehensive guide to safeguarding facilities during the harsh winter months. Construction projects face unique obstacles throughout the year, with each season presenting distinct challenges that can impact timelines, budgets, and worker safety. Winter brings unique challenges for facility managers, including harsh weather conditions. From material performance to installation timing, winter conditions can significantly impact project efficiency, safety, and reliability. That's why thoughtful electrical design and planning are critical when temperatures drop. In this article, we'll explore the challenges.



Base station power construction plan in winter and rainy season

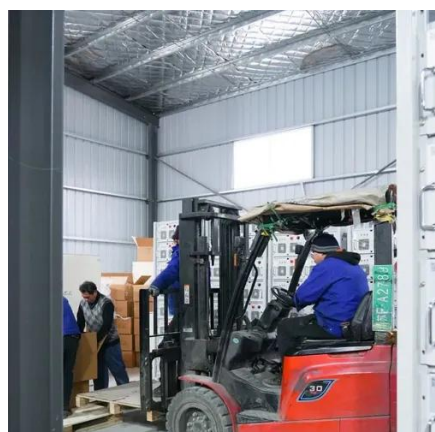


[Facilities Maintenance Winterization Strategies White Paper](#)

This comprehensive checklist is designed specifically for Powerhouse clients, ensuring thorough preparation for the winter season. To ensure ample preparation for winter conditions, organizations ...

Managing Construction Projects in Winter: Challenges and Best ...

When winter conditions are unavoidable, our team takes several steps to protect materials and maintain quality. A cold weather concrete/masonry plan is submitted to the architect for ...



[Electrical Considerations for Winter Construction Projects](#)

From material performance to installation timing, winter conditions can significantly impact project efficiency, safety, and reliability. That's why thoughtful electrical design and planning are ...

Rainy Season Construction Safety: The Essential Pre-Season ...

With the right planning, you can break the annual cycle of reactive fixes and instead launch the season with a structured, defensible plan that your crews trust and your client ...

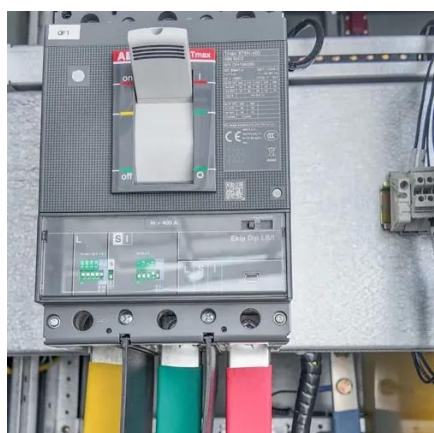


Winter is the Smartest Time to Plan Underground Utilities -- Venus

We build project plans that align with both municipal requirements and developer goals. With efficient planning and year-round capacity, we're the partner you want on your team long before ...

Winter Construction Plan

The Winter Construction Plan ("Plan") provides an overview of the procedures that will be employed by Enbridge Energy, Limited Partnership ("Enbridge") should construction occur during winter conditions ...



9 Tips for Managing Construction Zones During the Rainy Season

When winter conditions are unavoidable, our team takes several steps to protect materials and maintain quality. A cold weather ...

Exterior Design of Your Home with



Dzinly , Exterior Design of Client's

Learn how to keep projects on time in any climate through the use of correct construction material, worker safety, and other tips. When it comes to building projects, weather and climate are ...



[Study on Improvement of Construction Scheme of Housing ...](#)

In view of this, this paper mainly studies the earthwork, hoisting engineering and equipment power consumption in the rainy season construction technical scheme of building engineering, and puts ...

[Seasonal Construction Planning: A Year-Round Guide](#)

Learn how to manage construction projects effectively year-round. Discover strategies for winter, spring, summer, and autumn challenges to ensure safety.



9 Tips for Managing Construction Zones During the Rainy Season

In turn, the extreme rainy season can lead to structural damage, costly delays, and crew injuries that increase costs and liabilities. That's why we've outlined ten concrete steps to help ...



Contact Us

For catalog requests, pricing, or partnerships, please visit:

<https://id2market.eu>

Phone: +34 910 56 87 45

Email: info@id2market.eu

Scan the QR code to access our WhatsApp.

