



Base station room closes communication





Overview

The base station connects to substations, wall panels, or desk units. It can also direct a private call to a single location. So, how does an intercom system work in practice?

. Base station (or base radio station, BS) is - according to the International Telecommunication Union 's (ITU) Radio Regulations (RR) [1] - a " land station in the land mobile service. The base station antennas transmit and receive RF (radio frequency). An intercom is more than a buzzer at the door; it is a full network built for safety and communication. Understanding how these stations function is essential for anyone engaged in the field of telecommunications or simply interested in the mechanics. Several factors contribute to poor indoor signals:

Building Materials: Concrete, metal, brick, and energy-efficient Low-E glass are highly effective at deflecting and absorbing radio frequency (RF) signals.

Building Size & Layout: In large buildings, the sheer distance from the exterior to the core.

An In-Building Emergency Responder Communications Enhancement System (ERCES) is a wireless communications system used by first responder and emergency services personnel, such as police, fire, emergency medical, homeland security, and disaster response agencies.



Base station room closes communication

Base stations and networks

The base station antennas transmit and receive RF (radio frequency) signals, or radio waves, to and from mobile phones near the base station. Without these radio waves, mobile communications would ...



Base station

In professional two-way radio systems, a base station is used to maintain contact with a dispatch fleet of hand-held or mobile radios, and/or to activate one-way paging receivers. The base station is one end ...



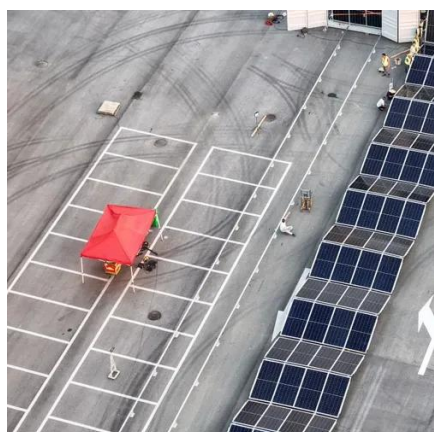
[Parts of an Intercom System Explained Clearly](#)

It is a network of parts, base stations, substations, intercom stations, and supporting components, that together create communication and control. The parts of an intercom system may ...



[Fix Poor Cell Signal in Buildings , Banyan Networks , DAS](#)

In today's world, reliable in-building communication is as essential as any other utility. It enhances the tenant experience, boosts property value, and ensures the safety of everyone who ...



[Understanding Base Stations in Mobile Communication](#)

Base stations play a vital role in mobile telecommunications, serving as the intermediaries between cell phones and the broader network infrastructure. Without them, seamless connectivity would not exist. ...



Base Station System Structure

The intent of this section is to explore the role of base stations in communications systems, and to develop a reference model that can be used to describe and compare base station software ...



What Is the Role of a Base Station in Wireless Communication?

Base stations manage handoffs, allowing uninterrupted service during transitions. They also support roaming by maintaining connectivity when users travel beyond their home network's range.

Base stations and networks



It is a network of parts, base stations, substations, intercom stations, and supporting components, that together create communication and control. The parts of an intercom system may ...



Public Safety Primer

These frequencies are allocated by the Federal Communications Commission (FCC) for communication between fixed base stations and land mobile vehicle-mounted and portable transceivers.

Risk Communication Guide for Mobile Phones and Base Stations

Once people become used to a base station in their neighbourhood they might cease to worry about it. Effective risk communication is decisive in supporting this process.





Contact Us

For catalog requests, pricing, or partnerships, please visit:

<https://id2market.eu>

Phone: +34 910 56 87 45

Email: info@id2market.eu

Scan the QR code to access our WhatsApp.

