



Base station wind power supply equipment installation





Base station wind power supply equipment installation



[Wind power generation requires base installation](#)

Shows you different processes and equipment

Base Station Antennas: Pushing the Limits of Wind Loading on ...

By taking the time to refine measurement techniques to ensure the most accurate possible test results, we are now able to look at pushing the wind loading efficiency of base station antennas.

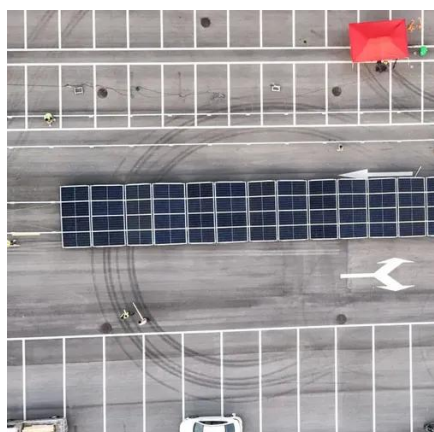


[Base station wind power supply application](#)

This paper studies structure design and control system of 3 KW wind and solar hybrid power systems for 3G base station. The system merges into 3G base stations to save

[High Stable Wind Solar Generator Power Supply ...](#)

Here we adopt 5kW wind turbine together with 5kW solar module ...



Optimal sizing of photovoltaic-wind-diesel-battery power supply for

Having all the above facts in mind, the main idea of this paper is therefore to theoretically describe and software implement a novel planning tool for optimal sizing of standalone PV-wind ...

[Installation of Wind Turbines: Setting Up a Wind Farm](#)

If you're trying to figure out how the installation of wind turbines works, stick with us. We'll cover everything you need to know.



[WIND SOLAR HYBRID POWER SYSTEM FOR THE ...](#)

As a telecommunication management system, BMS ensures stable and continuous power supply for base stations during high-load operations by precisely managing battery status, providing a reliable ...

[Step-by-Step Guide to Wind Turbine](#)



Installation

Discover wind turbine installation steps, from site assessment to grid connection, and boost your energy game!



High Stable Wind Solar Generator Power Supply System for Mobile Base

Here we adopt 5kW wind turbine together with 5kW solar module as the new energy power supply system, it can fully meet the need of those small base station for 24 hours continuous working.



How to make wind solar hybrid systems for telecom stations?

At present, wind and solar hybrid power supply systems require higher requirements for base station power. To implement new energy development, our team will continue to conduct technical research ...



Why Telecom Base Stations?

Variable Speed Operation to improve fuel efficiency
Reduces Fuel Consumption (typically by 50 - 80%)
PV and small-scale wind generators can be easily incorporated to supplement the system and saves ...



Contact Us

For catalog requests, pricing, or partnerships, please visit:

<https://id2market.eu>

Phone: +34 910 56 87 45

Email: info@id2market.eu

Scan the QR code to access our WhatsApp.

