



Base stations of telecommunication companies





Overview

A base station connects your phone to the network. They provide the coverage you need for calls and data. The LTE Base Station System serves as the cornerstone of Long-Term Evolution (LTE) mobile communication networks, functioning as the primary interface between mobile users and the operator's core network. Their primary functions include: Signal Transmission: Towers relay voice and data signals to maintain uninterrupted communication. Coverage Expansion: By. Gain valuable market intelligence on the Base Station Market, anticipated to expand from USD 20 billion in 2024 to USD 40 billion by 2033 at a CAGR of 8.



Base stations of telecommunication companies



Base station

OverviewComputer networkingLand surveyingWireless communicationsSee also

In the area of wireless computer networking, a base station is a radio receiver/transmitter that serves as the hub of the local wireless network, and may also be the gateway between a wired network and the wireless network. It typically consists of a low-power transmitter and wireless router.

[Top Base Station Companies & How to Compare Them \(2025\)](#)

Choosing the right base station provider is crucial for telecom operators, infrastructure firms, and technology integrators aiming to stay ahead in 2025. With rapid advancements in 5G, IoT,



[Who Has the Most Cell Phone Towers? Unveiling the Giants of](#)

Cell phone towers, also known as base stations, serve as the crucial link between mobile phones and the wider telecommunications network. Their primary functions include: Signal ...

5G Base Station Companies

The rollout of 5G networks is transforming the connectivity landscape, and the 5G Base Station Market is at the forefront of this revolution. 5G



base stations form the backbone of next-generation wireless ...



5G Base Station Companies

Get access to the business profiles of top 20 5G Base Station companies, providing in-depth details on their company overview, key products and services, financials, recent developments and strategic ...

What Are the Top 10 LTE Base Station System Companies in 2025?

top 10 LTE Base Station System companies in 2025, their market share, revenue, CAGR, and regional insights shaping global LTE infrastructure growth.



Base Stations and Cell Towers: The Pillars of Mobile Connectivity

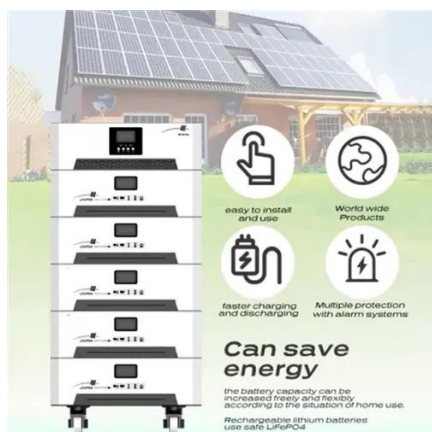
Base stations use antennas mounted on cell towers to send and receive radio signals to and from mobile devices within their coverage area. This communication enables users to make ...

[Base Stations: The Core and Future of](#)



Telecom Networks

At the heart of this connectivity lies a vital piece of telecom infrastructure: the telecom base station. Serving as the backbone of mobile communication networks, base stations are crucial for signal ...



What are Base Station in Telecommunications?

The Backbone of Wireless Networks A base station connects your phone to the network. It acts as a hub between mobile devices and the core system. Base stations form the backbone of ...

Mobile Base Stations: Cells, Sectors, Carriers Explained

A base station, abbreviated BS, is an important component of the radio access network in mobile telecommunications. Its main functions are modulation and demodulation of signals, and RF ...





Contact Us

For catalog requests, pricing, or partnerships, please visit:

<https://id2market.eu>

Phone: +34 910 56 87 45

Email: info@id2market.eu

Scan the QR code to access our WhatsApp.

