



# Bergey 10kW wind turbine





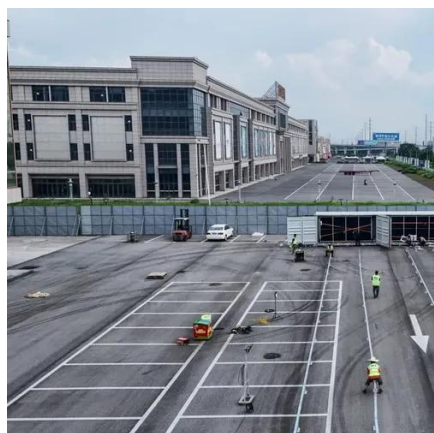
## Overview

---

The BWC Excel 10 is a modern 7 meter (23 ft) diameter, 10 kW wind turbine designed for high reliability, low maintenance, and automatic operation in adverse weather condition.



## Bergey 10kW wind turbine

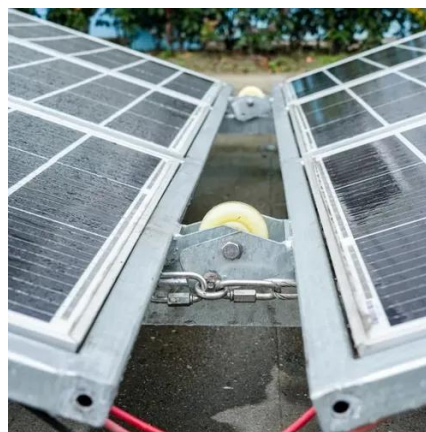


### [BERGEY EXCEL 10 Wind Turbine Sale - Wind Turbines UK](#)

Complete Bergey Excel 10 turbine with 80ft (24m) Lattice Tower - 23ft Rotor Diameter. Dismantle and Collect today for an ultra-cheap bargain! Bergey's slogan: "The wise choice for Performance, ...

### [Bergey Excel 10Kw Grid-Tie Turbine + 12kW Powersync Inverter](#)

IMPORTANT: Only two turbines are available at this special price! Bergey's BWC Excel grid-intertie wind turbines are rated for 10 kilowatts AC output in a utility-interconnection system.



### **Bergey Wind Power**

With only three moving parts and no scheduled maintenance necessary, the Bergey 10 kW has compiled a service record that no other wind turbine can match. We back it up with the longest ...

### **Bergey BWC Excel 10**

In the generator, Bergey WindPower Co. sets to Synchronous permanent. The manufacturer has used one generator for the BWC Excel 10. The voltage amounts to 220 V. At the mains frequency, the ...



## Buying a Bergey turbine. Power your dream Alternate Energy ...

For information on the permitting issues we recommend the AWEA guide available at: The best candidates for a Bergey 10 kW wind turbine are those with a residential or commercial property of at ...



## Excel 10 Off Grid

The BWC Excel 10 is a modern 7 meter (23 ft) diameter, 10 kW wind turbine designed for high reliability, low maintenance, and automatic operation in adverse weather condition



## Bergey Excel 10kW Wind turbine

The new Bergey Excel 10 is ideal for large homes, farms, and small businesses. Its extra large rotor and ultra low cut-in wind speed give it exceptional performance, out producing all other turbines in its class.



## [Bergey BWC Excel 10 Off-Grid Wind](#)



## Turbine

The BWC Excel 10 is a modern 7 meter (23 ft) diameter, 10 kW wind turbine designed for high reliability, low maintenance, and automatic operation in adverse weather condition





## Contact Us

---

For catalog requests, pricing, or partnerships, please visit:

<https://id2market.eu>

Phone: +34 910 56 87 45

Email: [info@id2market.eu](mailto:info@id2market.eu)

Scan the QR code to access our WhatsApp.

