



Can a 24 volt inverter be used with 12 volts





Overview

A 12V inverter cannot run on a 24V battery. This setup may cause immediate failure and void the warranty. Correct compatibility is essential for reliable electrical. No, you cannot safely use a 24V inverter with a 12V battery without causing damage or failure. The voltage mismatch between the inverter and battery can result in poor performance, overheating, or even complete inverter burnout. These devices, which emerged in the mid-20th century, have become increasingly important with the rise of renewable energy and mobile power needs. The choice. In solar PV arrays, RV (recreational vehicle) conversions, and portable power stations, the inverter is the heart of the system—transforming direct current (DC) into alternating current (AC). Is something like this even possible?

I was just thinking something like this.



Can a 24 volt inverter be used with 12 volts

114KWh ESS

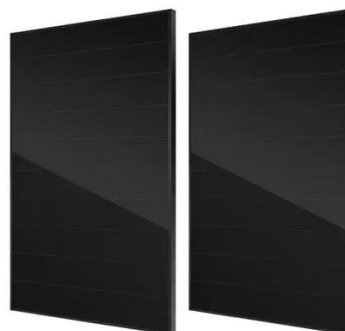


Can I Run A 12V Inverter On A 24V Battery? Solutions And Best ...

You can safely convert 24V to 12V for your inverter using a DC-DC converter or a voltage regulator designed for that purpose. A DC-DC converter efficiently reduces the voltage by stepping ...

[Can You Use a 24 volt inverte With a 12V Battery System?](#)

Success: The short answer: you can connect a 24 volt inverter to a 12 V system only by doubling the battery voltage (series wiring or a DC-DC step-up). Directly hooking one 12 V battery to ...



[Powering a 12V inverter with 24V batteries?](#)

I have a 24 volt inverter but if it went down I would like the option to use my old 12 volt in a pinch.

Can I Use a 24V Inverter with a 12V Battery? Compatibility and

A 24V inverter needs a 24-volt power source to operate efficiently and safely. Connecting it to a 12V battery will result in inadequate voltage, which can prevent the inverter from powering ...



[Can I Use 24V Inverter with 12V Battery](#)

Using an inverter with a matched voltage level to your battery is essential for efficient power conversion. A 24V inverter inherently anticipates a 24V input. Using a 12V input could result in ...



[how to use 12V inverter on 24 volt \(2 battery\) system](#)

Option 1: keep the 24v, sell the inverter and buy a 24v one. Option 2: make the entire system 12V. If you don't have more parts connected, it's as simple as connect the battery in parallel and connect ...



[The Difference Between 12V & 24V: Which is Best for You?](#)

A 24V system operates at a higher voltage, making it ideal for larger applications requiring more power. While you can choose between two 12V batteries connected in series or a single 24V ...



[12V vs 24V Inverter: What's The](#)



Difference & Which is ...

Torn between 12V and 24V inverters? Discover the key differences in efficiency, cost, and power capacity to determine which is better for your energy needs.



Can I Put 24 Volts into a 12 Volt Inverter?

Conclusion: Under no circumstances should you feed 24 V DC directly into a 12 V inverter. This mismatch results in component destruction, safety hazards, and voided warranties.

12V vs 24V Inverter: What's the difference between 12 and 24 Volt

Can I Use a 24V Inverter with a 12V Battery? You can't use a 24V inverter with a 12V battery. This is because the voltage is too low and leads to under voltage. If an inverter senses under voltage it will

...





Contact Us

For catalog requests, pricing, or partnerships, please visit:

<https://id2market.eu>

Phone: +34 910 56 87 45

Email: info@id2market.eu

Scan the QR code to access our WhatsApp.

