



Can a 36V inverter on a construction site be used with a 48V one





Can a 36V inverter on a construction site be used with a 48V one

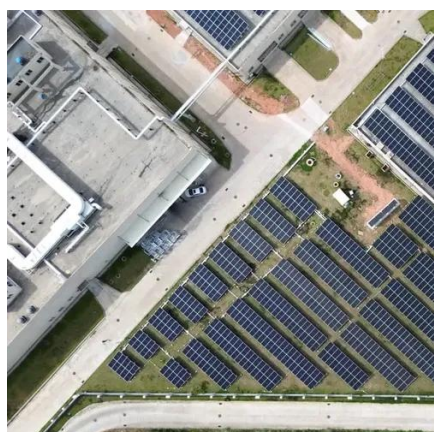


Here's what I've learnt after using 12V, 24V, 36V & 48V inverter ...

This was a 48V 3.5kVA Su-Kam Transformer-based Inverter with four 200Ah Su-Kam batteries connected in series and to a Su-Kam BMS. It was a robust system for me and had great ...

12V, 24V, or 48V Solar Power System: Which Voltage Is Best for ...

Inverter Chargers handle this function plus allow you to charge your batteries off shore power or a generator. Renogy's 3500W Solar Inverter Charger is designed for a 48V system. This all-in-one ...



Can you run a 48V battery on a 36V motor?

Running a 48V battery on a 36V motor isn't recommended due to voltage incompatibility. A 36V motor is designed for a specific voltage range, and exceeding it risks overheating, component ...

Can the 36v voltage of the inverter be used at the construction site

The voltage rating (12V inverter vs 24V inverter) indicates the DC input voltage that the inverter can handle. While both types serve the same purpose, they have distinct advantages and considerations.



Is it possible to run 36v motor on 48v battery?

Hey Guys, Regarding my previous thread, I've found a suitable narrow motor with disc brake mount and nice customer service, but the motor is 36v, and my battery is little bigger than 48v ...



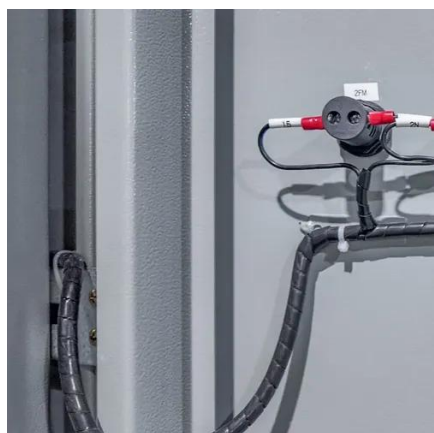
When to Use a 24V or 48V Battery System Instead of a 12V System

Practically all home systems will run off of either 12V, 24V, or 48V, so the inverter will have a step up transformer. This inverter will increase the voltage to either 110V, 120V, or 230V, depending usually ...



48V Motor with 36V Battery: Risks You Should Know

Using a 36V battery with a 48V motor reduces performance by 25%, increases heat generation, shortens component lifespan, and creates potential fire hazards due to higher current ...



What Happens If You Put 48V to a 36V



Motor?

In the realm of electric vehicles, including e-bikes and golf carts, understanding the relationship between voltage and motor compatibility is crucial. When you introduce a 48V battery to ...



Can You Use a 36V Battery on a 48V Motor: Understanding the

Understanding Voltage and Motor Compatibility To address the question of using a 36V battery on a 48V motor, it's essential to understand the basics of voltage and motor compatibility. ...

Can I use a 36V battery with a 48V motor?

Powering electric motors requires the right combination of voltage and amperage. When it comes to matching a battery with a motor, it's essential to understand the compatibility factors. So, ...

- LIQUID/AIR COOLING
- INTELLIGENT INTEGRATION
- PROTECTION IP54/IP55
- BATTERY /6000 CYCLES





Contact Us

For catalog requests, pricing, or partnerships, please visit:

<https://id2market.eu>

Phone: +34 910 56 87 45

Email: info@id2market.eu

Scan the QR code to access our WhatsApp.

