



Can a 48v inverter be used with a 60v one





Can a 48v inverter be used with a 60v one



[CAN 48V AND 60V INVERTERS BE USED TOGETHER A ...](#)

The 48V inverter, the electronic component that drives the 48V eMotor (electric motor), is able to be integrated on all architectures beyond P0 (alternator position) meaning between the engine and the ...

Changing from 2-48v banks to one 60v , DIY Solar Power Forum

Our charge controller and inverter are both rated for a larger bank so not anticipating any issues there, other than learning the new values for charge percentage.

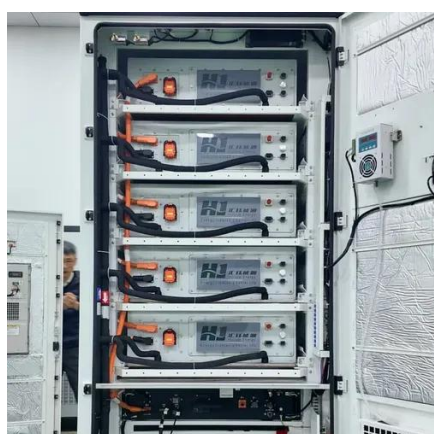


60V inverter option

I don't think these parameters would be suitable for a nominal 60V battery, I wouldn't recommend using a 60V battery with a 48V appliance. The Voltage range for a 48V MultiPlus is 38V ...

[Can 48v and 60v inverters be used interchangeably?](#)

Understanding Voltage Compatibility Many solar energy users ask: "Can my 48V battery bank power a 60V inverter?" The short answer is yes - but it's like trying to drink a thick milkshake



How to Connect a 48V Inverter to a 60V Power Source: Step-by-Step ...

Summary: Connecting a 48V inverter to a 60V power system requires voltage regulation and safety precautions. This guide explains compatibility challenges, practical solutions, and industry best ...

[How to use a 60v battery pack on 48v motor](#)

If you still cruised at 40km/h on a 60v battery, you could be at 66% of your no load speed. This is near the efficiency cliff, so you'd probably be burning up ~20-25% of your energy as heat.



How to Safely Use a 48V Inverter with a 60V Battery: A Technical Guide

Connecting a 48V inverter to a 60V battery might seem like solving a puzzle with mismatched pieces. While possible, it requires careful planning - imagine trying to fill a water balloon from a fire hose.

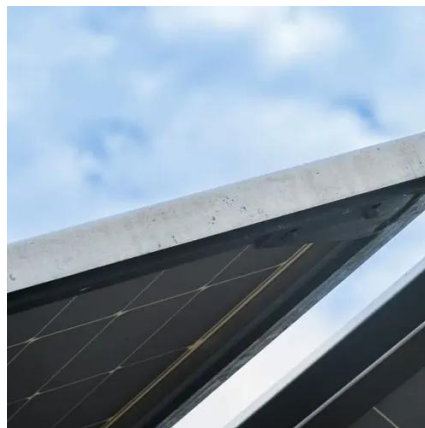


[Can a 60V Battery and 48V Inverter Be](#)



Used Together?

Mixing a *60V battery* with a *48V inverter* requires understanding voltage thresholds. Most inverters operate within $\pm 10\%$ of their rated voltage. For a 48V system, the safe input range is typically *43V ...



Can 48V and 60V Inverters Be Used Together A Comprehensive Guide

Wondering whether 48V and 60V inverters can operate simultaneously in renewable energy systems? This article explores compatibility, real-world applications, and optimization strategies for hybrid ...

Can a 48V Motor Handle 60V? Understanding Voltage Compatibility ...

In summary, while a 48V motor may technically handle 60V, it is not advisable due to potential issues with performance and durability. The lower voltage will typically push about 80% of ...





Contact Us

For catalog requests, pricing, or partnerships, please visit:

<https://id2market.eu>

Phone: +34 910 56 87 45

Email: info@id2market.eu

Scan the QR code to access our WhatsApp.

