



Can wind turbines be turned on when the wind is low





Overview

No, wind turbines do not generate electricity when it's not windy. We will explain everything you should know. You are not the first person to ask why you have sometimes seen a number of wind turbines stopped and you will not be the last. Most turbines can only handle wind speeds of 100-180 miles per hour. The way the wind will blow is not always predictable, though prevailing winds can be predicted for a given location. Cut-in speed varies among different. You are here: Countries / Geographic Wiki / Do they turn off wind turbines when it's windy?

When the anemometer registers wind speeds higher than 55 mph (cut-out speed varies by turbine), it triggers the wind turbine to automatically shut off.



Can wind turbines be turned on when the wind is low



Do they turn off wind turbines when it's windy?

Wind turbine power output is variable due to the fluctuation in wind speed; however, when coupled with an energy storage device, wind power can provide a steady power output.

When There Is No Wind, How Are Wind Turbines Powered?

There is a common misunderstanding that wind turbines stop working when there is no wind. However, the reality is more complex. Wind turbine designers have taken this issue into account and ...



Do Wind Turbines Need To Be Turned On

They can generate power at wind speeds as low as 5 mph, but if speeds drop below this, there isn't enough energy to rotate the blades. Turbines might also cease to operate under extreme ...

Why Do Wind Turbines Stop?

Even when there is no wind at ground level, there can still be a significant wind speed at the height of the turbine, so it is not uncommon to see turbines rotating when it feels like there is no ...



Why are wind turbines turning when no wind?

One possible explanation is that the wind speeds may be too low to turn the turbines evenly. Another reason could be that there may be mechanical issues with the turbines that are

Why Do Some Wind Turbines Not Turn

Wind turbines need minimum wind speeds to generate power. Large-scale turbines start producing electricity at wind speeds between 3-4 meters per second (6.7-9 mph), which experts call ...



Can Wind Turbines Work When Its Not Windy?

No, wind turbines do not generate electricity when it's not windy. They also don't generate electricity when the wind speed drops below what's called the 'cut-in-speed'. That's the minimum wind speed ...

How Wind Turbines Really Work: The



Hidden Secrets

Without this, they will turn away from the wind, and so the wind energy will hit the nacelle and tower first which is less efficient. Vertical wind turbines do not need a yaw system, they will work ...

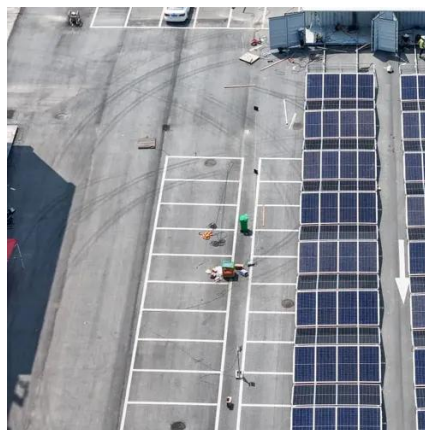


How Do Wind Turbines Work When It Is Not Windy?

Even when there is no wind at ground level, there can still be a significant wind speed at the height of the turbine, so it is not uncommon to see ...

How Do Wind Turbines Work When It Is Not Windy?

Curious about how wind turbines work when there's no wind? This article explains how turbines generate electricity, even when it's not windy outside!



Why are there wind turbines stopped if there is wind

Why do we see wind turbines stopped if there is enough wind? A lack of wind is one of the reasons why you see wind turbines in wind farms stopped, but it is not the only reason.



Contact Us

For catalog requests, pricing, or partnerships, please visit:

<https://id2market.eu>

Phone: +34 910 56 87 45

Email: info@id2market.eu

Scan the QR code to access our WhatsApp.

