



Canberra Mobile Outdoor Power BESS





Canberra Mobile Outdoor Power BESS



Canberra Mobile Outdoor Power BESS: Revolutionizing Outdoor Energy

The Canberra Mobile Outdoor Power BESS (Battery Energy Storage System) offers portable energy storage that adapts to diverse outdoor scenarios. This article explores how this innovative technology addresses modern ...

Canberra Mobile Outdoor Power BESS

Scheduled to begin operations in 2026, the BESS will store enough renewable energy to power one-third of Canberra for two hours during peak demand, playing a pivotal role in achieving the ACT's net-zero emissions ...



Williamsdale BESS

The Williamsdale Battery Energy Storage System (BESS) will enhance energy security and reliability by storing renewable energy for use during peak demand.

[Big Canberra Battery - Williamsdale BESS](#)

The large-scale battery energy storage system (BESS) will provide at least 250 megawatts (MW) of power. This is enough energy to power one-third of Canberra for two hours during peak demand periods.



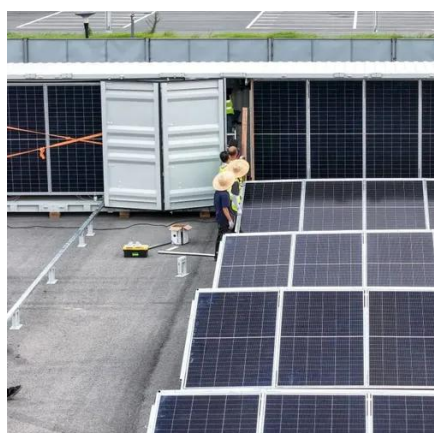
Ekus Energy

This 250-megawatt (MW), 500 megawatt-hour (MWh) battery energy storage system (BESS) is part of the Big Canberra Battery project and can store enough renewable energy to power one-third of Canberra for two ...



[Work begins on Williamsdale Battery Energy Storage System](#)

The Williamsdale BESS is a large-scale 250 megawatts (MW) battery. It will store enough renewable energy to power one-third of Canberra for two hours during peak demand.



Williamsdale BESS

Williamsdale BESS will deliver a key stage of the ACT Government's Big Canberra Battery ecosystem, helping the Territory reduce reliance on fossil fuels and achieve its 2045 net zero emissions target.

Net zero milestone: Construction



starts on Williamsdale Battery ...

A partnership between the ACT Government and global energy storage leader Eku Energy, the 250 megawatts BESS will be part of the Evoenergy distribution network. It will store ...



Australian Capital Territory Awards 500MWH Bess Project to ...

The BESS will store energy generated during times of surplus renewable generation and off-peak times, helping to manage Canberra's peak load by injecting power back to the grid when it is ...

[Williamsdale Battery Energy Storage System](#)

Explore the Williamsdale Battery Energy Storage System (BESS) project by Eku Energy, a 250MW/500MWh facility in Canberra. This project enhances energy security and reliability, storing ...





Contact Us

For catalog requests, pricing, or partnerships, please visit:

<https://id2market.eu>

Phone: +34 910 56 87 45

Email: info@id2market.eu

Scan the QR code to access our WhatsApp.

