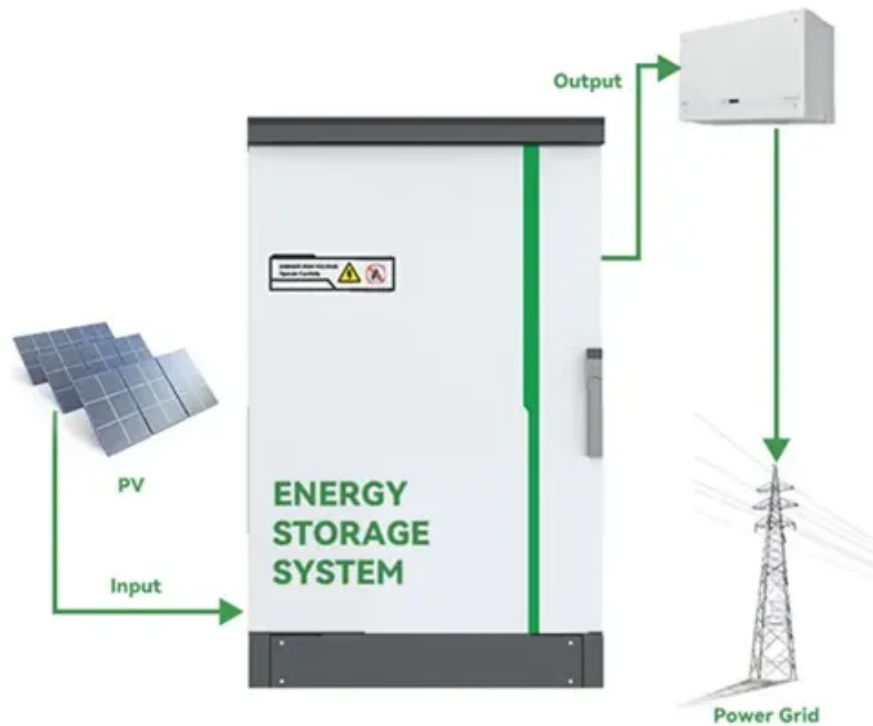




# Cape Town communication base station flow battery lightning protection grounding





## Cape Town communication base station flow battery lightning protection



### LIGHTNING PROTECTION FOR TELECOM COMMUNICATION ...

Battery risks of communication base stations IoT-enabled batteries face risks like BMS firmware tampering, false state-of-charge reporting, and remote shutdown exploits.

### Environmental Services & Consulting . CAPE

Cape Environmental Management Inc is an award-winning environmental remediation and infrastructure construction firm with a history of integrity, safety and excellence.

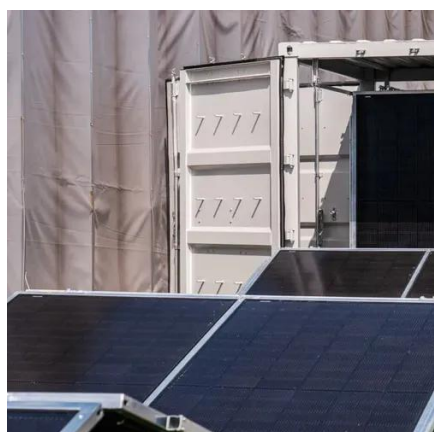


### **Lightning protection solution for telecom communication base stations**

The grounding grid consists of horizontal grounding bodies and vertical grounding bodies, which connect various equipment in the base station to ensure that lightning current can quickly and ...

### LIGHTNING PROTECTION SOLUTION FOR TELECOM ...

Which battery is best for telecom base station backup power? Among various battery technologies, Lithium Iron Phosphate (LiFePO4) batteries stand out as the ideal choice for telecom base station ...



## CAPE Definition & Meaning

The meaning of CAPE is a point or extension of land jutting out into water as a peninsula or as a projecting point. How to use cape in a sentence.

## Battery lightning protection classification for communication base stations

May 8, 2025 · Lightning protection for telecom communication base stations involves a multi-layered approach, including direct and indirect lightning strike protection.



## [Cape Fear Sets First Look at Javier Bardem's Max Cady and](#)

Apple TV revealed a first look at Javier Bardem, Amy Adams and Patrick Wilson in its 'Cape Fear' series as well as its release date.



## What Is A Cape In Geography?



A cape is an elevated landmass that extends deep into the ocean, sea, river, or lake. Learn more about the formation of capes as well as famous capes around the world.



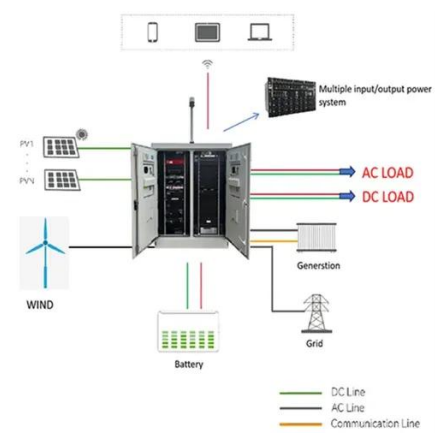
## Lightning protection for distribution boxes in communication base ...

Install lightning rods, grounding, surge protectors, shielding, and follow standards for effective communication station protection. This paper is a revised and amended version of experimental ...



## Cape (geography)

In geography, a cape is a headland, peninsula or promontory extending into a body of water, usually a sea. [1] A cape usually represents a marked change in trend of the coastline, [2] often making them ...



## [CAPE Home , Proudly Serving Southwest Indiana](#)

Non-profit dedicated to promoting self-sufficiency and improving quality of life for low-income individuals and families in Southwest Indiana.

## [Lightning protection and grounding](#)



## requirements for ...

Here we introduce the technical requirements for the installation project of lightning protection grounding for C network mobile base stations. 1 General technical requirements



## **CAPE , English meaning**

CAPE definition: 1. a very large piece of land sticking out into the sea: 2. a type of loose coat without sleeves.... Learn more.

## Grounding, Lightning Protection and Surge Protection

To make the application of these products simpler, the grounding, lightning protection and surge protection system at a telecommunications facility is divided into 5 components.



## **Communication base station battery lightning protection level**

Use best protection practices for lightning protection as described in this document including the use of single point ground, ac surge protection, and surge protection on wire-line

## How Are Base Stations Protected Against



## Lightning?

In base station lightning protection design, the grounding grid and ground busbars are key components. With proper design, they can effectively reduce the impact of lightning on the station.



### **Replace the lightning protection of the communication base ...**

This solution simplifies the complex base station ground network engineering by using the equipment method, and completely isolates the impact between lightning protection grounding,



## Contact Us

---

For catalog requests, pricing, or partnerships, please visit:

<https://id2market.eu>

Phone: +34 910 56 87 45

Email: [info@id2market.eu](mailto:info@id2market.eu)

Scan the QR code to access our WhatsApp.

