



Car installation of 220v inverter





Overview

Step-by-step guide to installing a car power inverter. Includes sizing, choosing the power source, proper grounding, and critical safety checks. Power inverters are handy gadgets that convert 12V DC input into 110V or 220V AC output. They are useful in cars because they allow you to use electronic devices that require the type of electricity available from electrical outlets at home. There are two main ways to wire a power inverter in a. If you're thinking about installing a car power inverter, there are three major considerations to think about before you begin: Portable device power requirements: The inverter needs to supply enough power for all the devices you want to plug in at once.



Car installation of 220v inverter



How to Install a Car Inverter?

Installation of a power inverter for car involves multiple steps, below is a detailed installation guide. Prepare installation tools: Prepare screwdrivers, cables, connectors, and other ...

[Installing a Power Inverter in a Car or Truck](#)

Before you install a power inverter in your car or truck, you'll need to consider everything from power output vs. needs to location and wiring.



[How to Install a Power Inverter in a Car?](#)

In this guide, you will learn everything about power inverters for cars: what is a power inverter, how to install a power inverter in a car, and how it works. Of course, we will recommend ...

[How to Install a Power Inverter on Your Vehicle](#)

If you feel you'll be using a heavy-duty inverter for a long time, however, you should install the inverter into your car or truck for good. So, how do you do this?



[How to Install a Power Inverter in Your Car](#)

Step-by-step guide to installing a car power inverter. Includes sizing, choosing the power source, proper grounding, and critical safety checks.



[How to Install a Power Inverter in a Car](#)

Installing a power inverter in your car can greatly enhance its functionality, providing you with a reliable source of AC power on the go. By following this step-by-step guide, you can ensure a ...



[Power Inverter Installation: A Guide For Your Car , ShunAuto](#)

Learn how to install a power inverter in your car with this step-by-step guide. We cover everything from choosing the right inverter to safety precautions.

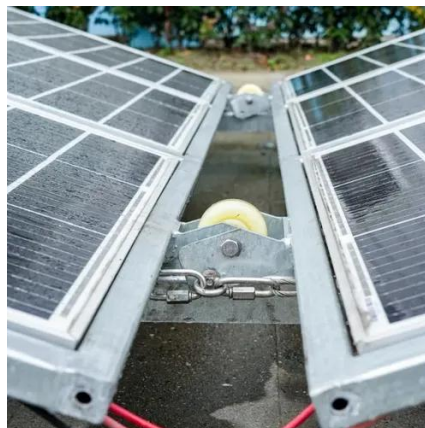


[Installing a Power Inverter in a Car or](#)



Truck

The size of the inverter, the installation process, and the installation position are all determined by the amount of power your device uses, which is the first and most crucial factor to ...



Wiring Power Inverters In Cars: A Step-By-Step Guide

A comprehensive guide to wiring power inverters in cars, covering everything from safety precautions to step-by-step instructions for a secure and efficient installation.

Car Inverter Installation Guide: Power On-the-Go Safely! -- EASUN ...

This guide provides a comprehensive overview of selecting the right inverter, determining the optimal installation location, making secure connections, conducting essential safety checks, and ...





Contact Us

For catalog requests, pricing, or partnerships, please visit:

<https://id2market.eu>

Phone: +34 910 56 87 45

Email: info@id2market.eu

Scan the QR code to access our WhatsApp.

