



# Chad communication base station lead-acid battery installation



Single Phase Hybrid

- 5 Year Warranty Period
- 9 Year Global Leading Inverter Brand
- Top 3 World Single Phase PV Inverter Supplier





## Overview

---

This paper makes recommendations and provides guidelines relating primarily to the handling, installation and bench marking processes for large lead-acid battery systems of the wet and valve regulated varieties. ar industrial lead-acid batteries. he battery contains sulfuric acid. They ensure uninterrupted connectivity during grid failures by storing energy and discharging it when needed. [pdf] State-run Radiodiffusion Nationale Tchadienne operates. When installing lead-acid batteries in telecom base stations, several critical factors must be considered to ensure efficient, safe, and long-lasting performance. Proper installation can optimize the battery's lifecycle and protect both the equipment and personnel involved. 5 billion in 2023 and a projected expansion to USD 18. A typical power consumption for each equipment at site has been provided by Airtel company, in order for us to use it. The paper proposes a novel planning approach for optimal sizing of standalone photovoltaic-wind-diesel-battery power supply for mobile telephony base stations.



## Chad communication base station lead-acid battery installation



### TELECOM BASE STATION BATTERY

It integrates the photovoltaic, wind energy, rectifier modules, and lithium batteries for a stable power supply, backup power, and optical network access in one enclosure. This versatile energy cabinet ...

### INSTALLATION OPERATING INSTRUCTIONS

CAUTION! Before proceeding with the unpacking, handling, installation and operation of a lead-acid storage battery, the following general information should be reviewed together with the ...



### Telecommunication Battery

Telecommunication battery (telecom battery), also known as telecom backup battery or telecom battery bank, primarily refer to the backup power systems used in base stations and are a ...

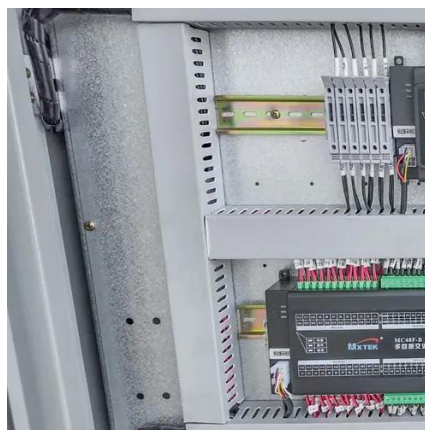
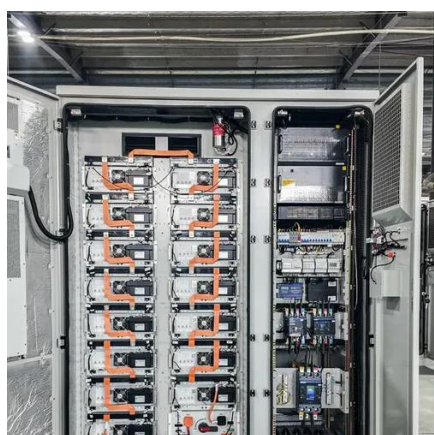
### [Communication base station lead-acid battery](#)

Types of Batteries Used in Telecom Systems: A Guide These batteries consist of lead dioxide and sponge lead, immersed in a sulfuric acid electrolyte. This simple design allows for efficient energy ...



## GUIDELINES FOR SUCCESSFUL INSTALLATION OF LARGE ...

This paper makes recommendations and provides guidelines relating primarily to the handling, installation and bench marking processes for large lead-acid battery systems of the wet and valve ...



## BATTERY MANAGEMENT SYSTEM FOR COMMUNICATION BASE ...

The role of lead-acid battery equipment in communication base stations This article explores the critical function of lead-acid batteries in telecom power systems, their advantages, deployment strategies, ...



## **The 200Ah communication base station backup power lead-acid battery**

GEM Battery GF series communication base station lead-acid batteries are used for telecom communication backup power supply, support multi-channel parallel connection, good scalability, ...



## Communication base station lead-acid battery wind power ...

When installing lead-acid batteries in telecom base stations, several critical factors must be considered to ensure efficient, safe, and long-lasting performance.



## INSTALLATION LOCATION OF LEAD ACID BATTERIES FOR ...

While until a few years ago, battery systems of telecom installations used large lead acid cells, nowadays, lithium-based batteries are the technology of choice for telco applications. [pdf]

## **Key Considerations When Installing Lead-Acid Batteries for Telecom Base**

When installing lead-acid batteries in telecom base stations, several critical factors must be considered to ensure efficient, safe, and long-lasting performance.





## Contact Us

---

For catalog requests, pricing, or partnerships, please visit:

<https://id2market.eu>

Phone: +34 910 56 87 45

Email: [info@id2market.eu](mailto:info@id2market.eu)

Scan the QR code to access our WhatsApp.

