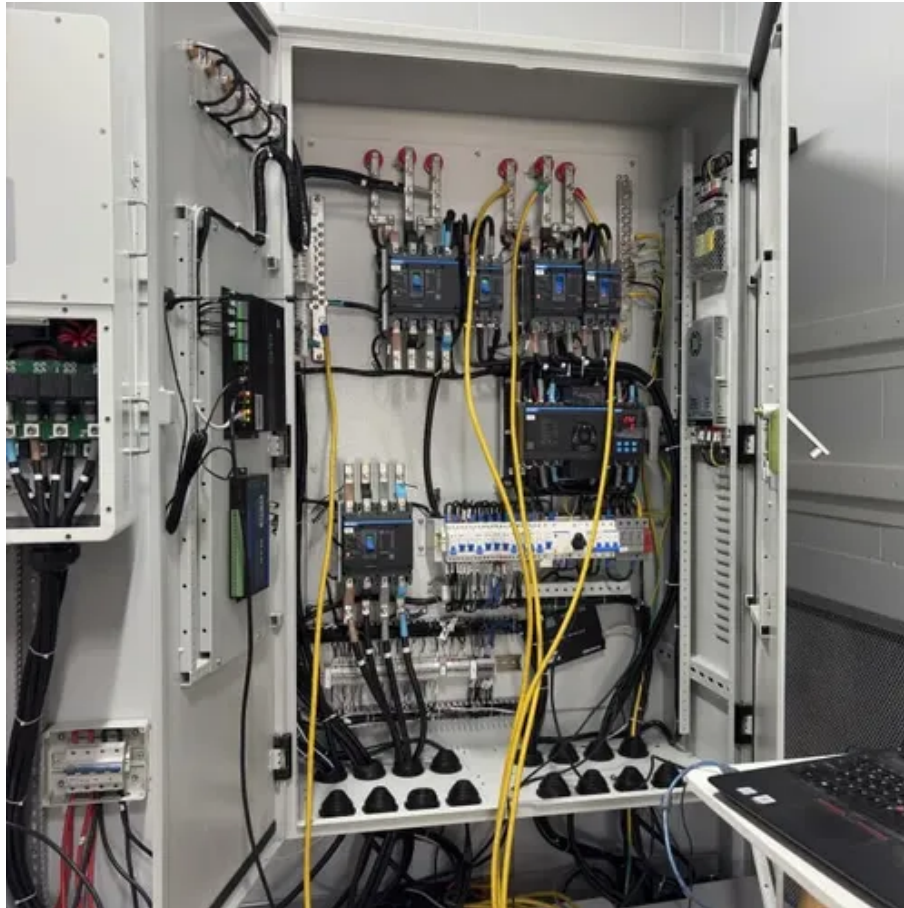




Combiner box to energy storage device



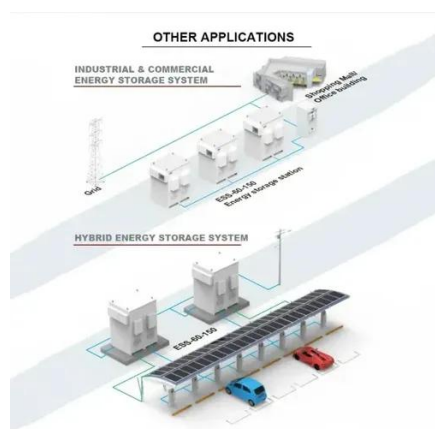


Overview

Its core function is to connect the DC output of multiple power generation units (such as photovoltaic strings and wind turbines) in parallel and transmit it to the inverter or energy storage system through a unified output terminal. Battery combiner boxes are essential components in solar panel systems that streamline the wiring process and provide a centralized connection point. Choosing. In the realm of battery - energy storage systems (BESS), the combiner box plays a crucial yet often under - appreciated role. This device plays a significant role in both residential and commercial solar installations, particularly when. Combiner boxes, isolator switches, and disconnects are the traffic controllers of your solar array.



Combiner box to energy storage device



What is the role of a combiner box in a battery storage system?

There are different types of combiner boxes that can be used in battery storage systems. One of the most common types is the DC Combiner Box. As the name suggests, it's designed to handle DC ...

Understanding PV Combiner Boxes: Design, Function, Protection, and

What Is a PV Combiner Box? A combiner box is a key DC distribution device used between PV strings and the inverter. Each string consists of solar modules wired in series, and the ...



[Combiner Boxes, Isolators, Disconnects](#)

Your guide to solar combiner boxes, isolator switches, and disconnects. Learn their applications and safety functions.

The Ultimate Guide to Solar Combiner Boxes: From Basics to ...

Solar combiner boxes play a vital role in various solar energy projects, facilitating the integration and management of multiple solar panel strings. Below are some notable case studies ...



PV Combiner Box for Efficient Solar Energy Systems

A PV combiner box is essential for optimizing solar power systems by consolidating multiple panel strings into a single output, enhancing efficiency, safety, and reliability.



How does a combiner box work in a battery

A combiner box in a battery - energy storage system serves as a centralized point for collecting and consolidating electrical currents from multiple sources, such as battery strings.



1500V PV Combiner Box for Solar Storage System

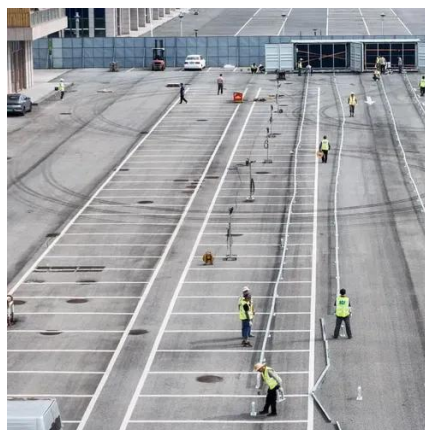
By doubling down on voltage, you slash cable runs and reduce the total count of combiner boxes and inverters. We typically see a Balance of System (BOS) cost reduction of 8-12% ...

The Ultimate Guide to Battery



Combiner Boxes: Everything You Need ...

Battery combiner boxes are essential components in solar panel systems that streamline the wiring process and provide a centralized connection point. These boxes combine the positive and negative ...

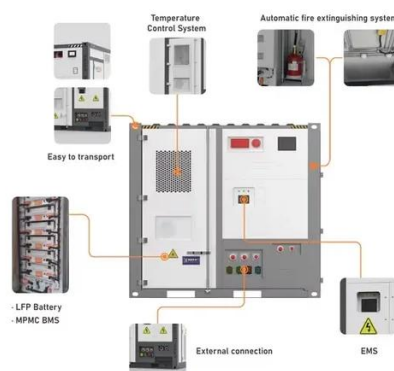


COMBINER BOX: key equipment in new energy power generation ...

The combiner box is an electrical device used to centrally manage multiple current inputs, mainly used in photovoltaic power generation systems, wind power generation systems and other ...

Best Solar Combiner Boxes

Read on for our expert reviews of the best solar combiner boxes available. Check the latest prices to ensure you get a great deal! These combiner boxes come with a non-conductive enclosure system ...





Contact Us

For catalog requests, pricing, or partnerships, please visit:

<https://id2market.eu>

Phone: +34 910 56 87 45

Email: info@id2market.eu

Scan the QR code to access our WhatsApp.

