



Current-type single-phase full-bridge inverter





Overview

In conclusion, the single-phase full-bridge inverter is an electronic device for converting direct current to single-phase alternating current. 1) The current entering node a in Figure 8 is considered to be positive. It is also called a DC to AC Power Converter.



Current-type single-phase full-bridge inverter

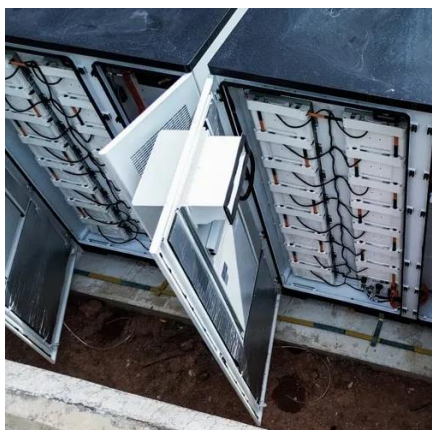


Single-phase full-bridge inverter

This article will analyze the functioning of the single-phase full-bridge inverter, an electronic apparatus employed for the conversion of direct current (DC) into alternating current (AC).

CHAPTER 2

inverter (VSI) is one in which the dc source has small or negligible impedance. The voltage at the input terminals is constant. A current-source inverter (CSI) is fed with source. controlled turn-on and turn ...



Single Phase Full Bridge Inverter Explained

This article explains Single Phase Full Bridge Inverter with the help of circuit diagram and various relevant waveforms. Comparison between half and full bridge inverters have also been detailed.

Full Bridge Inverter: Circuit, Waveforms, Working And Applications

In this single-phase full bridge inverter, I will explain the circuit working principle and waveform to complete this session regarding this full bridge inverter.



Single Phase Full Bridge Inverter

A single phase bridge DC-AC inverter is shown in Figure below. The analysis of the single phase DC-AC inverters is done taking into account following assumptions and conventions.

Single Phase Full Bridge Inverter

In this topic, you study Single Phase Full Bridge Inverter - Circuit Diagram, Working & Waveforms. Fig. 1: Single Phase Full Bridge Inverter. The above Fig. 1 shows single phase bridge ...



Single Phase Full Bridge Inverter

Single Phase Full Bridge Inverter: The main drawback of half-bridge inverter is that it requires 3-wire dc supply. This difficulty can, however, be overcome by using a single phase full bridge inverter shown ...

Voltage Fed Full Bridge DC-DC & DC-



AC Converter High-Freq ...

This application report documents the implementation of the Voltage Fed Full Bridge isolated DC-DC converter followed by the Full-Bridge DC-AC converter using TMS320F28069 (C2000TM) for High ...



[Full Bridge Inverter - Circuit, Operation, Waveforms & Uses](#)

This article is about the working operation and waveform of a single-phase full bridge inverter for R load, RL load and RLC load. The comparison of all loads is given at the end of this article.



Contact Us

For catalog requests, pricing, or partnerships, please visit:

<https://id2market.eu>

Phone: +34 910 56 87 45

Email: info@id2market.eu

Scan the QR code to access our WhatsApp.

