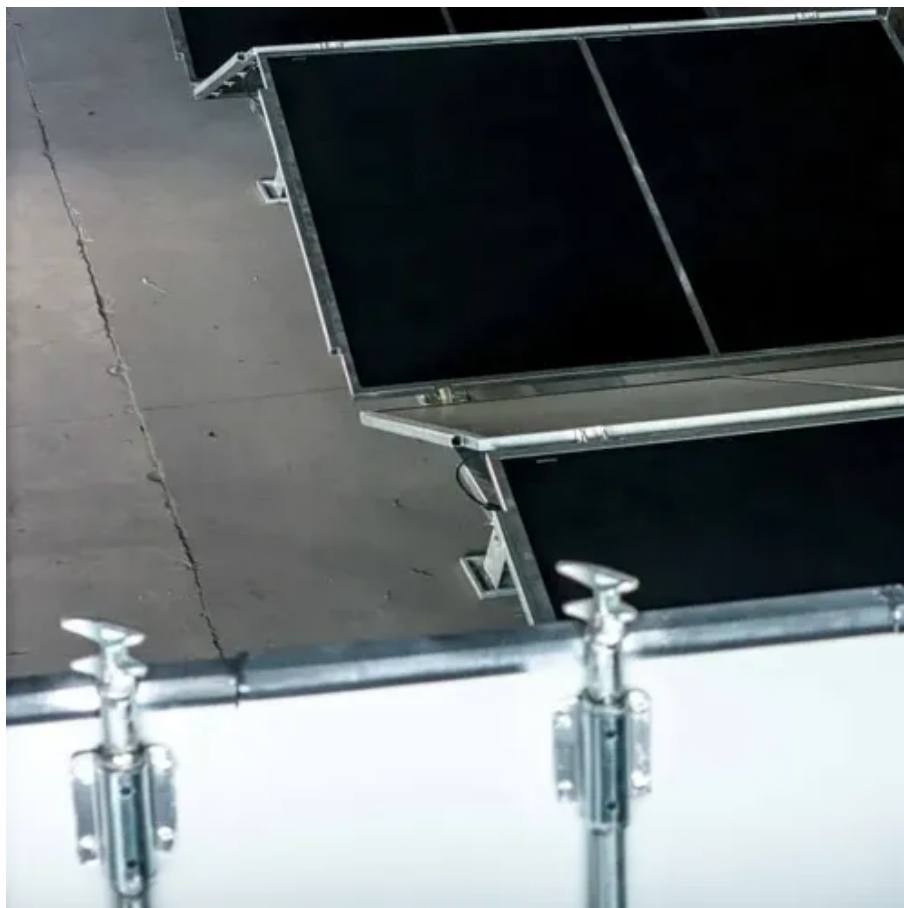




Daily electricity cost of 5G base station





Daily electricity cost of 5G base station



What is the Power Consumption of a 5G Base Station?

Ericsson has been able to innovate a 5G base station that consumes only 20% energy when the traffic is low compared to a normal setup. This achieves through advanced software ...

What is 5G Energy Consumption?

Learn how much power 5G networks consume and understand how you can reduce RAN energy use. Does Open Ran Save Energy? The Information and Communication Technology (ICT) industry ...



Energy Consumption of 5G, Wireless Systems and the Digital Ecosystem

"A 5G base station is generally expected to consume roughly three times as much power as a 4G base station. And more 5G base stations are needed to cover the same area," -IEEE Spectrum, 5G's ...

5G base stations use a lot more energy than 4G base stations: MTN

A typical 5G base station consumes up to twice or more the power of a 4G base station, writes MTN Consulting Chief Analyst Matt Walker in a new report entitled " Operators facing power ...



Energy Consumption of 5G, Wireless Systems and the Digital Ecosystem

A typical 5G base station consumes up to twice or more the power of a 4G base station, writes MTN Consulting Chief Analyst Matt Walker in a new ...



Modelling the 5G Energy Consumption using Real-world Data:

...

To address this, we propose a novel deep learning model for 5G base station energy consumption estimation based on a real-world dataset. Unlike existing methods, our approach integrates the Base ...



Why does 5g base station consume so much power and how to ...

According to the above calculation, the total electricity cost of 5G base stations will reach about 10 times that of 4G. Moreover, we know that 5G consumes a lot of power and generates a lot ...



5G Infrastructure Costs: What Telcos Are Paying , PatentPC

While 5G promises faster speeds and lower latency, it comes at the cost of higher energy consumption. Estimates suggest that 5G networks require 3 to 4 times more energy than their 4G counterparts.



How much power does 5G consume?

One 5G base station is estimated to consume about as much power as 73 households (6), and 3x as much as the previous generation of base stations (5), (7). When base stations, data centers and ...

Massive 5G electricity costs are in focus ahead of the global build-out

Unfortunately, most of these tower base stations were not conceived with energy efficiency in mind. They operate around a PUE of 1.5 (power in/power of the telco (IT) load), meaning that ...



Communication Base Station Cost Optimization: Navigating the 5G Era

With operators spending \$180 billion annually on network infrastructure, how can we reconcile the 63% surge in energy consumption per 5G site with shrinking profit margins?



Contact Us

For catalog requests, pricing, or partnerships, please visit:

<https://id2market.eu>

Phone: +34 910 56 87 45

Email: info@id2market.eu

Scan the QR code to access our WhatsApp.

