



Dimensions and specifications of a box of photovoltaic panels





Overview

The standard residential solar photovoltaic panel size you'll see most often is based on a 60-cell configuration, typically measuring about 67 inches long by 40 inches wide. This size offers the best balance between power output, handling ease, and fitting standard roof dimensions. A 400W panel has the same physical footprint whether it produces 350W or 450W – the difference lies in cell. Example: 5kW solar system is comprised of 50 100-watt solar panels. Alright, your roof square footage is 1000 sq ft. Can you put a 5kW solar system on your roof?

For that, you will need to know what size is a typical 100-watt solar panel, right?

To bridge that gap of very useful knowledge needed. These are the squared or rounded silicon photovoltaic cells encased in glass with a metal frame. One immediate difference you'll notice is that commercial panels are larger than residential panels. This guide dives into critical factors like model variations, technical specifications, and panel dimensions – key considerations for residential, commercial, and utilit. Still, most 60-cell solar panels have a size of 39" X 66" and most 72-cell solar panels have sizes of around 39" X 77". However, panels with cell counts of 96, 120, and 144 may have different sizes.



Dimensions and specifications of a box of photovoltaic panels

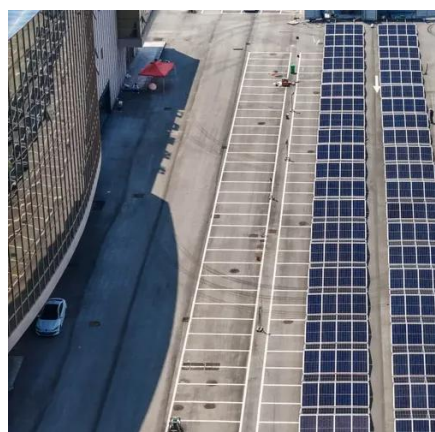


Standard Solar Panel Sizes And Wattages (100W-500W Dimensions)

To bridge that gap of very useful knowledge needed, we have compared and averaged the sizes of 100-watt to 500-watt solar panels available on the market. The goal here is to get to the average solar ...

[Rooftop Solar Panel Size and Layout Guide](#)

Standard modules: Typically range from 400-550W, with relatively compact dimensions. They are suitable for residential or small to medium rooftops, offering flexible installation and ...



[Solar Panel Size & Dimensions Guide 2025](#) [. Complete Specs](#)

Complete guide to solar panel sizes and dimensions. Compare 60-cell vs 72-cell panels, weights, roof space requirements, and installation specs for 2025.

[Photovoltaic Panel Models, Specifications, and Dimensions: A](#)

This guide dives into critical factors like model variations, technical specifications, and panel dimensions - key considerations for residential, commercial, and utility-scale projects.



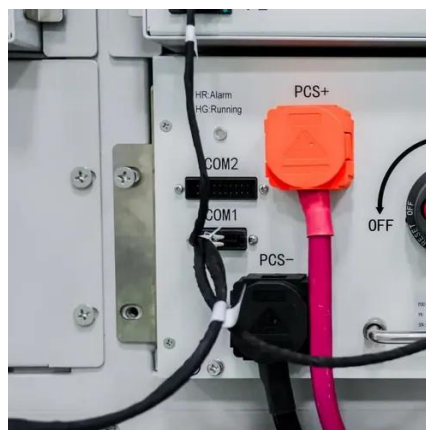
Understanding Solar Panel Dimensions In 2025: A Complete Size Guide

Explore the most common solar panel dimensions in 2025, including residential and commercial sizes. Learn how solar panel size dimensions affect power, installation, and efficiency.



[How To Read A Solar Panel Spec Sheet: A Complete Guide](#)

For this blog, we will look at traditional rectangular-shaped crystalline solar panels. These are the squared or rounded silicon photovoltaic cells encased in glass with a metal frame. We ...



[standard solar photovoltaic panel sizes explained](#)

Discover standard solar photovoltaic panel sizes. Choose the perfect fit for your installation with our expert guide. Learn more today!



[Solar Panel Dimensions and Sizes:](#)



[Complete Guide](#)

There are three main sizes of solar panels to know: 60-cell, 72-cell, and 96-cell. For commercial and residential solar panels, the 60-cell and 72-cell solar panels size are most commonly used as the 96 ...



[Detailed Guide to Solar Panel Size & Dimensions](#)

Looking to install solar panels? Learn about solar panel dimensions, wattage, cell types, and how to calculate the system size for your home's energy needs.

[What Are the Common Solar Panel Sizes?](#)

Still, most 60-cell solar panels have a size of 39" X 66" and most 72-cell solar panels have sizes of around 39" X 77". However, panels with cell counts of 96, 120, and 144 may have different ...





Contact Us

For catalog requests, pricing, or partnerships, please visit:

<https://id2market.eu>

Phone: +34 910 56 87 45

Email: info@id2market.eu

Scan the QR code to access our WhatsApp.

