



Dimensions of Hargeisa solar panels





Overview

There are three standardized sizes of solar panels: 60-cell, 72-cell, and 96-cell. Panel “Size” vs Physical Dimensions: The most critical distinction for homeowners is that solar panel “size” refers to electrical output (measured in watts), not physical measurements. A 400W panel has the same physical footprint whether it produces 350W or 450W - the difference lies in cell. Example: 5kW solar system is comprised of 50 100-watt solar panels. Alright, your roof square footage is 1000 sq ft. Can you put a 5kW solar system on your roof?

For that, you will need to know what size is a typical 100-watt solar panel, right?

To bridge that gap of very useful knowledge needed. Learning about the types of solar panels, their common dimensions, configurations, and solar installation tips will help you choose and design an efficient system for your home or business. 5 feet wide and weigh between 40 to 50 pounds. Understanding these specifications is crucial for determining roof.



Dimensions of Hargeisa solar panels



Solar Panel Size and Wattage Chart: Standard Sizes & Uses for Each

Using a solar panel size chart can help you choose the best types of solar panels for your home or application. Because the size of a standard solar panel can vary, a chart that outlines the ...

[Solar Panel Size & Dimensions Guide 2025](#) [. Complete Specs](#)

In this comprehensive guide, you'll learn everything you need to know about solar panel sizing, from standard dimensions to weight considerations, helping you determine the perfect solar ...



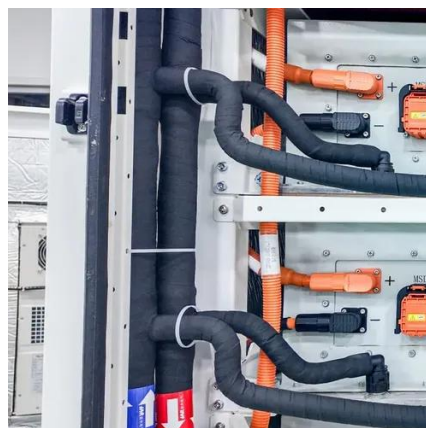
[Solar Panel Size Guide , Best Panel Size for Your Roof](#)

When people talk about a standard solar panel size, they usually mean the typical dimensions found in the industry. Solar cells are assembled in grids, and the most common ...



The Ultimate Guide to Solar Panel Size, Weight & Wattage (2025)

Find the exact solar panel size & weight in our 2025 guide. Our complete chart compares models by ft/cm and lbs/kg to help you plan your installation.



Dimensions of Hargeisa solar panels

The dimensions of 60-cell solar panels are 66 inches long and 39 inches wide (66x39), while 72-cell solar panels have dimensions of 78 inches long and 40 inches wide (78x40).



How Big Are Solar Panels? Solar Panel Size and Weight

Most homeowners receive solar panels designed specifically for pitched rooftops. These panels have become the industry standard because they balance energy output, weight, and size in ...



standard solar photovoltaic panel sizes explained

When we talk about the physical size of a solar panel, we are usually discussing its length, width, and thickness. These dimensions are primarily standardized by the number of ...

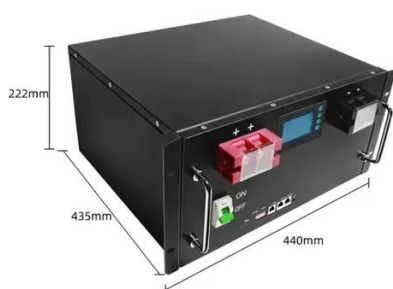


Standard Solar Panel Sizes And



Wattages (100W-500W Dimensions)

The goal here is to get to the average solar panel size by wattage. You can find typical dimensions of 100W, 150W, 170W, 200W, 200W, 220W, 300W, 350W, 400W, and 500W solar panels summarized ...



Understanding Solar Panel Dimensions In 2025: A Complete Size Guide

Explore the most common solar panel dimensions in 2025, including residential and commercial sizes. Learn how solar panel size dimensions affect power, installation, and efficiency.

[Detailed Guide to Solar Panel Size & Dimensions](#)

Choosing the proper system is not only about the solar panel dimensions. You should also consider wattage, number of cells, layout possibilities, and energy consumption. Also, your ...





Contact Us

For catalog requests, pricing, or partnerships, please visit:

<https://id2market.eu>

Phone: +34 910 56 87 45

Email: info@id2market.eu

Scan the QR code to access our WhatsApp.

