



Direct output wind power generation system





Overview

Direct-drive wind turbines use a system where the rotor is directly connected to the generator without the need for a gearbox. As a result, direct-drive permanent magnet synchronous wind power systems, characterized by their simple structure and high reliability, have gradually become the mainstream in wind power systems. This article discusses direct drive wind turbine.



Direct output wind power generation system



Power control of an autonomous wind energy conversion system ...

This study introduces the design, modeling, and control mechanisms of a self-sufficient wind energy conversion system (WECS) that utilizes a Permanent magnet synchronous generator ...

Wind Power Generation

Wind power generation is defined as the conversion of wind energy into electrical energy using wind turbines, often organized in groups to form wind farms, which provides a clean and renewable source ...



[Working principle of wind power direct drive generator](#)

Horizontal-Axis Wind Turbine Working Principle. The horizontal-axis wind turbine (HAWT) is a wind turbine in which the main rotor shaft is pointed in the direction of the wind to extract

Does a wind turbine generate alternating current or direct current?

In summary, wind turbines directly generate alternating current. Although this alternating current may fluctuate with changes in wind speed, it can meet the needs of different electrical ...

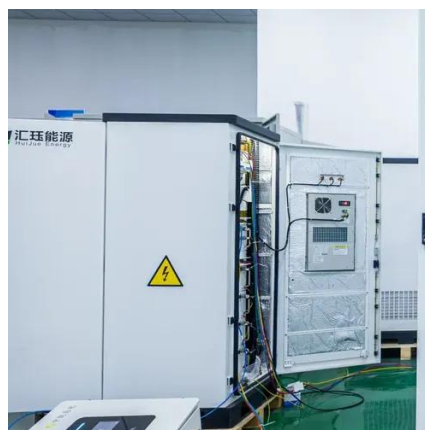


Modern electric machines and drives for wind power generation: A ...

This paper provides a thorough review of modern electric machines and drives for wind power generation, with emphasis on machine topologies, operation principles, performance ...

Wind energy conversion technologies and engineering approaches to

This study aims to conduct comparative analyses on WECS technologies (with different generators, and PECs) based on their energy harvesting capability, cost-effectiveness, and advances in designs. ...



[How do direct-drive wind turbines work?](#)

Direct-drive wind turbines use a system where the rotor is directly connected to the generator without the need for a gearbox. This setup eliminates the traditional gearbox that converts ...

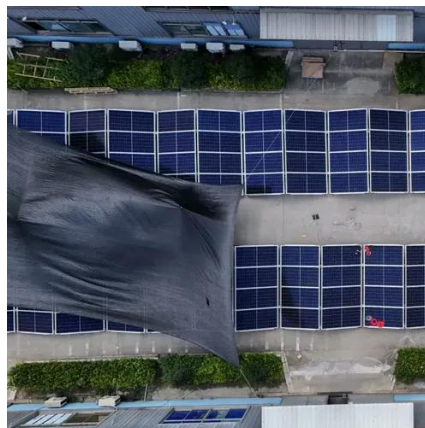


[Direct-Drive Wind Power Systems in the](#)



Real World: 5 Uses

Large-scale wind farms utilize direct-drive turbines for their high capacity and reliability. These turbines are designed for continuous operation, maximizing energy output.



Simulation study on direct-drive wind power system

The main components of direct-drive wind power systems include wind turbines, permanent magnet synchronous generator (PMSG), dual PWM AC/DC converters, DC bus links, and ...

Frequency regulation strategy of direct drive permanent magnet

Direct-drive permanent magnet synchronous wind power systems, characterized by their simple structure and high reliability, have gradually become the mainstream in wind power systems.





Contact Us

For catalog requests, pricing, or partnerships, please visit:

<https://id2market.eu>

Phone: +34 910 56 87 45

Email: info@id2market.eu

Scan the QR code to access our WhatsApp.

