



Distributed energy storage system battery wiring





Overview

Distributed systems feature streamlined wiring. With AC-only connections, installation is intuitive and reduces on-site errors. A notable example is the GSL-051200A-B-GBP2, a 10kWh wall-mounted LiFePO₄ battery that supports up to 16 units in parallel, each operating independently. Historically, Distributed Energy Resources (DERs) were assembled from discrete components or functional assemblies where the logic and operational approaches could be seen and analyzed. Today, much of the functionality is handled by an on-board computer following firmware and software instructions. Energy storage can help extend the hours of capacity met by clean resources by adding flexible capacity in tandem with renewables, making the system more reliable and resilient. Acting as a “shock absorber” for the grid, energy storage can mitigate “temporal mismatch between generation and. Distributed energy refers to power generation and storage that occurs close to the point of use rather than at a large, centralized plant. This can include solar panels on rooftops, small wind turbines, and energy storage systems like batteries. For example, the GSL-W-16K (16kWh 51.



Distributed energy storage system battery wiring

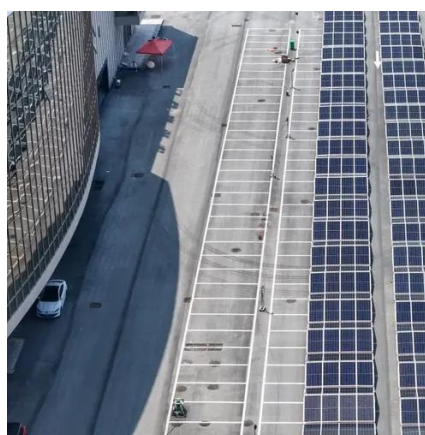


DISTRIBUTEDCOM Event error 10016

Thanks, Done as listed, but in Launch and Activated permissions. 'Add' is still greyed and cannot add anything. In the Permissions for Administrators box below the Local Launch, Remote ...

Event ID 10016, DistributedCOM

Also, the outcome is that, under normal conditions, the Microsoft Distributed Transaction Coordinator (MSDTC) service establishes a secure connection with the local System (Computer), not ...

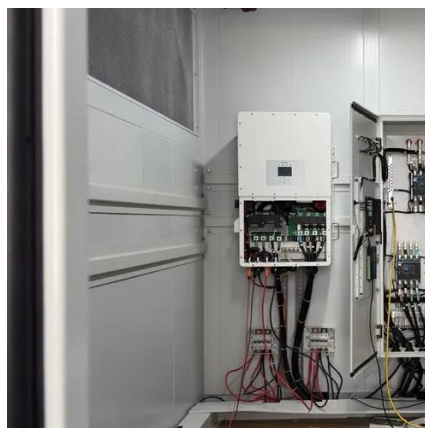


Interconnection of Batteries as Distributed Energy Resources

At specific distribution locations, BESS can provide unique distribution-based services, including voltage support, local congestion relief, and reliability benefits.

[Distributed energy storage system battery wiring](#)

DES come in many sizes and types, and are all made up of Distributed Energy Resources (DER), with sub-groups Distributed Generation (DG), and Energy Storage Systems (ESS), plus "smart" ...



Event ID 10016, DistributedCOM

Hi @ parsonm To solve COM errors, if you don't follow the Microsoft note, get a cli utility by Microsoft called dcomperm. Its source code is included with the Microsoft Windows SDK for ...



Need Help with DistributedCOM 10010

In this video, i will guide you on how to fix DistributedCOM Event ID 10016 error in Windows 10 and Windows 11.



Lithium battery parameters

Product capacity: 100Ah

Product size: 135*197*35mm

Product weight: 1.82kg

Product voltage: 3.2V

internal resistance: within 0.5



Essential Cabling Solutions for Battery Energy Storage Systems (BESS)

These energy storage solutions ensure a stable power supply, capturing excess energy when production is at its highest and releasing it during times of peak demand. The safety and performance of BESS ...



DistributedCOM Error. Solved

Distributed Component Object Model (DCOM) is a proprietary Microsoft technology for communication between software components on networked computers. DCOM, which originally ...



DistributedCOM Error. Solved

Computer Type: PC/Desktop System
Manufacturer/Model Number: Alienware R12 OS:
Multi-boot Windows 10/11 - RTM, RP, Beta, and
Insider CPU: 11th Gen Intel (R) Core (TM) i9 ...



Battery Energy Storage and Multiple Types of Distributed Energy

This white paper highlights the importance of the ability to adequately model distributed battery energy storage systems (BESS) and other forms of distributed energy storage in conjunction with the ...



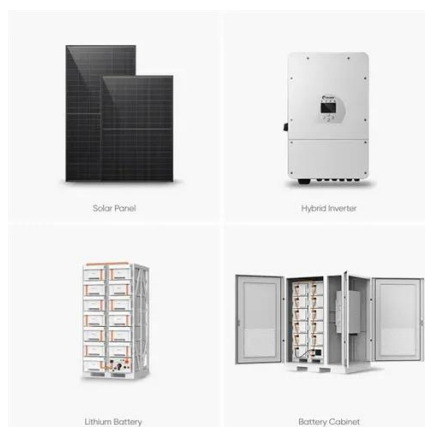
Distributed battery energy storage systems for deferring distribution

This paper examines the technical and economic viability of distributed battery energy storage systems owned by the system operator as an alternative to distribution network reinforcements.

Appendix A



Lacking industry standards at this time for Energy Storage Systems, the functionalities need to be verified through extensive detailed review of the operating manuals and often inquiries with the ...



Distributed Generation Manual

Please note that the CPS Energy Distributed Generation (DG) Manual is currently undergoing revisions to include Battery Energy Storage Systems (BESS), Microgrid, other DG Resources (DGRs), and ...

Store apps close immediately, Event 10010 with DistributedCOM

Update: Just came back from re-installing and re-registering all Windows Store Apps (even the Store itself I noticed) and still having the same issue. Did a reboot just in case after ...



Distributed vs Centralized Energy Storage Systems

Distributed systems feature streamlined wiring. With AC-only connections, installation is intuitive and reduces on-site errors. A notable example is the GSL-051200A-B-GBP2, a 10kWh wall ...

DistributedCOM permission settings



Error 10016 -should I resolve this?

Inside W10's Event Viewer, I see an error with ID of 10016 (DistributedCOM). Its error description is - The application-specific permission settings d



[Do I need "Distributed Link Tracking Client"?](#)

Do I need "Distributed Link Tracking Client"? Read up on it, cant quite make it out if it's to my disadvantage (and how) in every day Computer life if I have it disabled.

Windows 10 Event ID 10010 and 10016 Errors With DistributedCOM

I am having a number of events that seem to be located repeatedly with the source: DistributedCOM Event ID: 10010 and Event ID: 10016 also getting rep



Optimal planning of distributed generation and battery energy ...

In this paper, Distributed Generators (DGs) and Battery Energy Storage Systems (BESSs) are used simultaneously to improve the reliability of distribution networks.

[A Beginner's Guide to Battery Storage in](#)



Distributed Energy

As the world increasingly moves towards renewable energy sources, understanding how battery storage works in distributed energy systems has become crucial.





Contact Us

For catalog requests, pricing, or partnerships, please visit:

<https://id2market.eu>

Phone: +34 910 56 87 45

Email: info@id2market.eu

Scan the QR code to access our WhatsApp.

