



Distribution map of solar power stations around the world





Overview

The Global Energy and Renewables Map is an interactive web map where you can explore global power plants and U. Start exploring solar potential by clicking on the map. Calculate energy production for selected sites. It is provided. The Global Solar Power Tracker is composed of worldwide facility-level data on utility-scale (1 MW+) solar photovoltaic (PV) and solar thermal facilities, as well as country-aggregated distributed (<1 MW) solar PV data. It features the online interactive map tools, simplified photovoltaic (PV) power calculator, reporting tools and the extensive download. The World Bank and the International Finance Corporation, collectively The World Bank Group, have provided this Global Solar Atlas in addition to a series of global, regional and country GIS data layers and poster maps, to support the scale-up of solar power in our client countries.



Distribution map of solar power stations around the world



Global Solar Power Tracker

The Global Solar Power Tracker is composed of worldwide facility-level data on utility-scale (1 MW+) solar photovoltaic (PV) and solar thermal facilities, as well as country-aggregated distributed (<1 ...

Solar Power Plants Across the Globe (World Map) , database.earth

Data and information about power plants and their location across the globe, plotted on an Interactive world map



Global Solar Atlas

The GSA provides an interactive map of solar resource and photovoltaic power potential and a variety of other environmental data relevant for understanding the practical and technical potential of solar ...

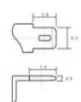
Global Energy and Renewables Map

The Global Energy and Renewables Map is an interactive web map where you can explore global power plants and U.S. solar and wind projects.



12.8V6Ah





- Nominal voltage (V):12.8
- Nominal capacity (Ah):6
- Rated energy (Wh):76.8
- Maximum charging voltage (V):14.6
- Maximum charging current (A):6
- Floating charge voltage (V):13.6-13.8
- Maximum continuous discharge current (A):10
- Maximum peak discharge current @10 seconds (A):20
- Maximum load power (W):100
- Discharge cut-off voltage (V):10.8
- Charging temperature (°C):-50
- Discharge temperature (°C):-20-+60
- Working humidity: <95% R.H (non condensing)
- Number of cycles (25 °C, 0.5c, 100%dod): >2000
- Cell combination mode: 32700-4s1p
- Terminal specification: T2 (6.3mm)
- Protection grade: IP65
- Overall dimension (mm):90*70*107mm
- Reference weight (kg):0.7
- Certification: un38.3/msds

Global Solar Atlas

The Global Solar Atlas, in addition to a series of global, regional and country GIS data layers and poster maps, has been developed to support the scale-up of solar power in countries across the world.

Global Solar Atlas

The Global Solar Atlas is provided by the Energy Sector Management Assistance Program (ESMAP), a multi-donor trust funded program administered by the World Bank, and was developed under contract by Solargis, a provider of solar resource data and photovoltaic (PV) energy evaluation services. The GSA provides an interactive map of solar resource and photovoltaic power potential and a variety of other environmental data relevant for understanding the practical and technical potential of solar power...



[Free Solar Maps & GIS Data , High-Res Download , Solargis](#)

Download free solar resource maps for 200+ countries. Ideal for a general overview of solar potential. For interactive site prospecting and bankable energy yield assessments, explore our professional ...



[Wiki-Solar maps of utility-scale solar projects worldwide](#)

We show the location of the projects from our extensive database in the form of place markers on a world map. We used the resources of Google Maps to give access to user-friendly facilities for ...



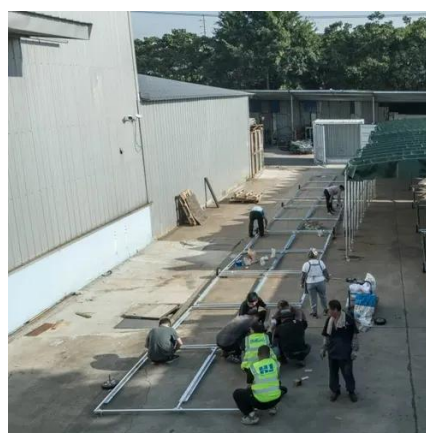
Global Solar Atlas

Start exploring solar potential by clicking on the map. Select sites, draw rectangles or polygons by clicking the respective map controls. Calculate energy production for selected sites. The Global Solar ...



[Dataset , Global Solar Atlas , World Bank Data360](#)

The World Bank and the International Finance Corporation, collectively The World Bank Group, have provided this Global Solar Atlas in addition to a series of global, regional and country GIS data layers ...



Global solar resource distribution ,



The Nicholas Institute for Energy

An interactive global map that provides solar potential with specific measurements available at chosen locations.





Contact Us

For catalog requests, pricing, or partnerships, please visit:

<https://id2market.eu>

Phone: +34 910 56 87 45

Email: info@id2market.eu

Scan the QR code to access our WhatsApp.

