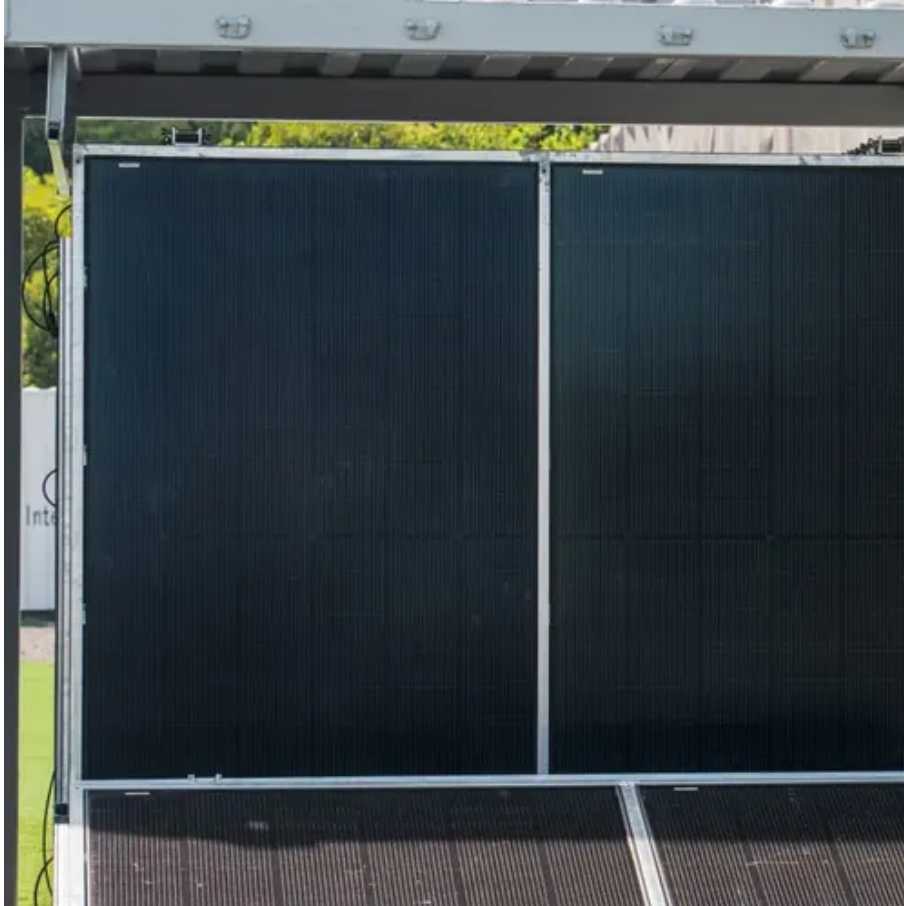


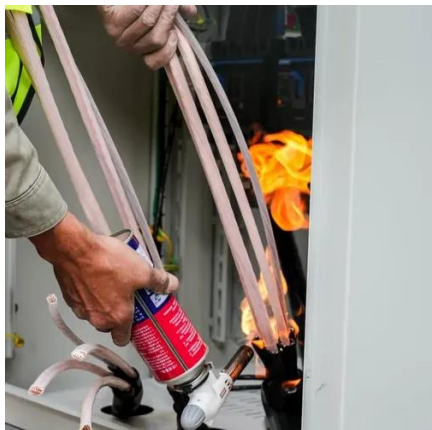


Do 5G base stations consume power quickly





Do 5G base stations consume power quickly

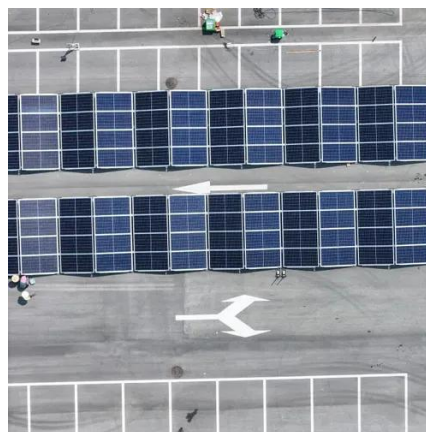


Comparison of Power Consumption Models for 5G Cellular Network ...

The main power consuming components of a base station are categorized in the same manner by almost all the discussed models, though the parameters which scale the power ...

Energy consumption optimization of 5G base stations considering

The explosive growth of mobile data traffic has resulted in a significant increase in the energy consumption of 5G base stations (BSs).



5G base stations use a lot more energy than 4G base stations: MTN

A typical 5G base station consumes up to twice or more the power of a 4G base station, writes MTN Consulting Chief Analyst Matt Walker in a new report entitled " Operators facing power ...

How much power does 5G consume?

One 5G base station is estimated to consume about as much power as 73 households (6), and 3x as much as the previous generation of base stations (5), (7). When base stations, data centers and ...



Why does 5g base station consume so much power and how to ...

5G base stations use high power consumption and high RF signals, which require more signal processing for digital and electromechanical units, and also put greater pressure on AU ...

Power consumption based on 5G communication

At present, 5G mobile traffic base stations in energy consumption accounted for 60% ~ 80%, compared with 4G energy consumption increased three times. In the future, high-density overlapping ...



Front Line Data Study about 5G Power Consumption

The power consumption of a single 5G station is 2.5 to 3.5 times higher than that of a single 4G station. The main factor behind this increase in 5G power consumption is the high power usage of the active ...

Energy Consumption of 5G, Wireless



Systems and the Digital Ecosystem

"A 5G base station is generally expected to consume roughly three times as much power as a 4G base station. And more 5G base stations are needed to cover the same area," -IEEE Spectrum, 5G's ...



What is 5G Energy Consumption?

With 5G projected to increase capacity up to approximately 1000-fold and high frequency millimeter wave (mmWave) transmission driving exponentially higher cell density, this percentage could ...

[What is the Power Consumption of a 5G Base Station?](#)

These 5G base stations consume about three times the power of the 4G stations. The main reason for this spike in power consumption is the addition of massive MIMO and beamforming, ...



Energy Consumption of 5G, Wireless Systems and the Digital Ecosystem

UK Parliament Finnish Transport and Communications Agency Traficom 2020 Study by The Haut Conseil Pour Le Climat Readings on The Energy Use of 5G "Information and Communication Technology (ICT), including data centres, communication networks and user devices, accounted for an estimated 4-6% of global electricity use in 2020. Increasing demand for ICT is expected to lead to an increase in global ICT energy use over the next decade." See more on ehtrust



Searches you might like

how much power do data centers use
data center energy usage
5g radiation
data center power consumption
IEEE Xplore

Power consumption based on 5G communication - IEEE Xplore

At present, 5G mobile traffic base stations in energy consumption accounted for 60% ~ 80%, compared with 4G energy consumption increased three times. In the future, high-density overlapping ...



Contact Us

For catalog requests, pricing, or partnerships, please visit:

<https://id2market.eu>

Phone: +34 910 56 87 45

Email: info@id2market.eu

Scan the QR code to access our WhatsApp.

