



# Do wind turbines only work when there is wind





## Overview

---

It sounds like a strange question, but I quite often get asked 'Do wind turbines work when it's not windy?'

' No, wind turbines do not generate electricity when it's not windy. They can be standalone or clustered to form part of a wind farm, and their efficiency depends on the consistency of wind. Wind turbines can have a horizontal or vertical axis. The. Wind turbines look like airplane propellers running on the spot—spinning round but going nowhere. They're serving a very useful purpose, however. Have you ever stopped to wonder how.



## Do wind turbines only work when there is wind



### [Can Wind Turbines Work When Its Not Windy?](#)

It sounds like a strange question, but I quite often get asked 'Do wind turbines work when it's not windy?'. No, wind turbines do not generate electricity when it's not windy. They also don't generate electricity when the ...

### [Wind Energy Myths: What the Science Actually Says](#)

Wind turbines need voltage regulation, frequency synchronization (60 Hertz in the U.S.), and power quality controls that windmills never required. Traditional windmills relied on drag, wind pushing ...



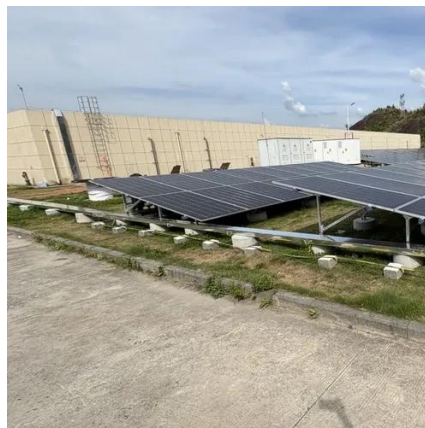
### [How Do Wind Turbines Work When It Is Not Windy?](#)

Curious about how wind turbines work when there's no wind? This article explains how turbines generate electricity, even when it's not windy outside!



## Hydronephrosis

Diagnosis Diagnosis involves the steps that your healthcare team takes to find out if hydronephrosis is the cause of your symptoms. Your healthcare professional starts by asking you ...



## Wind power , Description, Renewable Energy, Uses, Disadvantages

wind power, form of energy conversion in which turbines convert the kinetic energy of wind into mechanical or electrical energy that can be used for power. Together with solar power and hydroelectric ...

### Do Turbines Only Work When Wind Blows

Wind turbines are an "intermittent" source of electricity, meaning they only work if there is wind to turn the blades of the turbine. This is why onshore wind farms are often used to generate electricity.



### How Do Wind Turbines Work When It Is Not Windy?

Wind turbines need voltage regulation, frequency synchronization (60 Hertz in the U.S.), and power quality controls that windmills never required. Traditional windmills relied on drag, wind ...



## Urinary tract infection (UTI)



Learn about symptoms of urinary tract infections. Find out what causes UTIs, how infections are treated and ways to prevent repeat UTIs.



### Dietary supplements for weight loss

Know what claims about weight loss mean You might be surprised to learn that makers of dietary supplements rarely do clinical trials. That's part of the reason why there's little scientific proof ...



### Ileostomy

Can I swim? How do I shower? Do I need to buy different clothes? How will it affect my intimate life? Once you adjust, you'll likely find that it's possible to do many of the same activities you ...



### Fatty liver disease (MASLD)

Compared with a healthy liver (top), a fatty liver (bottom) appears bigger and discolored. Tissue samples show extra fat in fatty liver disease, while inflammation and advanced scarring are ...

### Do Wind Turbines Work Without



## Wind?

Though prevailing winds can be forecast for a certain place, the direction the wind will blow is not always predictable. The wind direction can change due to unforeseen atmospheric low- and high-pressure ...

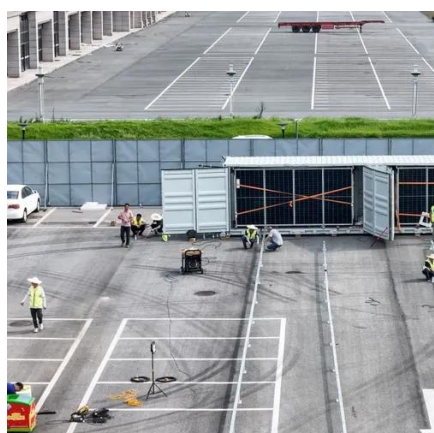


## Putting Wind to Work

Wind energy is produced with wind turbines --tall, tubular towers with blades rotating at the top. When the wind turns the blades, the blades turn a generator and create electricity. Wind turbines can have a ...

## Mindfulness exercises

To do this, find a quiet and comfortable space. Make sure you have time to fully focus on the exercises. They don't have to take much time, but you do need enough time to focus. Here are a ...



## [Statin side effects: Weigh the benefits and risks](#)

The body needs cholesterol. But having too much cholesterol in the blood raises the risk of heart attacks and strokes. Statins block an enzyme the liver needs to make cholesterol. This ...

## [Osteopathic medicine: What kind of](#)



## doctor is a D.O.?

You know what M.D. means, but what does D.O. mean? What's different and what's alike between these two kinds of health care providers?



SUPPORT REAL-TIME ONLINE MONITORING OF SYSTEM STATUS



## How well do face masks protect against COVID-19?

Face masks can help slow the spread of coronavirus disease 2019 (COVID-19). Learn about mask types, which masks to use and how to use them.

## **How Do Wind Turbines Work?**

Wind turbines work on a simple principle: instead of using electricity to make wind--like a fan--wind turbines use wind to make electricity. Wind turns the propeller-like blades of a turbine around a rotor, which spins a ...



## **How do wind turbines work?**

When wind blows past a plane's wings, it moves them upward with a force we call lift; when it blows past a turbine's blades, it spins them around instead. The wind loses some of its kinetic energy ...

## Brain MRI (brain magnetic resonance



[imaging\)](#)

Brain MRI is one of the tests you may have to determine the cause of headaches, dizziness, seizures, vision problems or hearing loss. This painless imaging test is used to diagnose a ...



## **How Wind Turbines Work , EARTH 104: Energy, Environment, and our ...**

All wind turbines have a minimum wind speed that differs depending on the size but is typically about 4-5 m/s (10 mph) and maximum wind speed above which they shut down to avoid damage, usually around 20-25 m/s ...



## Contact Us

---

For catalog requests, pricing, or partnerships, please visit:

<https://id2market.eu>

Phone: +34 910 56 87 45

Email: [info@id2market.eu](mailto:info@id2market.eu)

Scan the QR code to access our WhatsApp.

