



# Does building a communication base station require high voltage electricity

 **TAX FREE**    

## ENERGY STORAGE SYSTEM

**Product Model**  
HJ-ESS-215A(100KW/215KWh)  
HJ-ESS-115A(50KW 115KWh)

**Dimensions**  
1600\*1280\*2200mm  
1600\*1200\*2000mm

**Rated Battery Capacity**  
215KWH/115KWH

**Battery Cooling Method**  
Air Cooled/Liquid Cooled





## Overview

---

To provide these services, facilities require substantial electrical power, which usually comes from the electrical grid but may also be converted to direct current (DC) power at -48 volts for wired networks and +24 volts for wireless networks. At the time, engineers needed a voltage level that could: Support long-distance power transmission with acceptable voltage drop Reliably operate electromechanical relays and telephone circuits Enable ringing signals without excessive complexity Around 50V DC proved to be the optimal solution. Over. providers rely on backup power to maintain a constant power supply, to prevent power outages, and to ensure the operability of cell towers, equipment, and networks. The unique operational conditions of telecom base stations require batteries with characteristics distinct from general-purpose or consumer-grade products. Key components include: Tower base: The foundation. Tower frame: Includes braces, ladders, and platforms for support and accessibility. Antenna support: Ensures precise placement and stability of antennas. High Performance: LiFePO<sub>4</sub> batteries offer excellent discharge rates, supporting the demanding power requirements of base stations.



## Does building a communication base station require high voltage elec

---



### Why Do Telecom Base Stations Use -48V DC Power?

In modern communication networks--from 4G and 5G to future 6G--mobile base stations form the backbone of wireless connectivity. Behind this infrastructure lies a seemingly minor yet critical design ...

### **Why does the communication base station use -48V power supply?**

Because the smallest communications network and communications engineering are in the telephone network, the telecom bureau power supply voltage are 48V.



### **Does building a communication base station require high voltage power**

The design of the power supply system of modern communication base stations is an important part of ensuring the normal operation of the base station, and must be able to provide a stable and reliable ...

### Communication high voltage tower 5g base station

As global 5G deployments surge, communication base station voltage conversion systems face unprecedented demands. Did you know that 30% of energy loss in telecom grids occurs



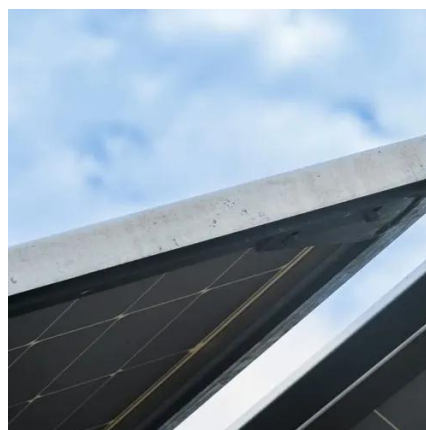
## Telecom Towers and Remote Base Stations

Remote base stations and telecom towers often face significant challenges when it comes to a consistent, reliable power supply. Many of these sites operate far from conventional ...



## **Fuel Cells for Backup Power in Telecommunications Facilities**

To provide these services, facilities require substantial electrical power, which usually comes from the electrical grid but may also be converted to direct current (DC) power at -48 volts for wired networks ...



## **Communication Batteries: Why Telecom Base Stations Have Unique ...**

The phrase "communication batteries" is often applied broadly, sometimes including handheld radios, emergency devices, or general-purpose backup batteries. In practice, when ...

## **Complete Guide to 5G Base Station**



## Construction , Key Steps, ...

Explore how 5G base stations are built--from site planning and cabinet installation to power systems and cooling solutions. Learn the essential components, technologies, and challenges ...

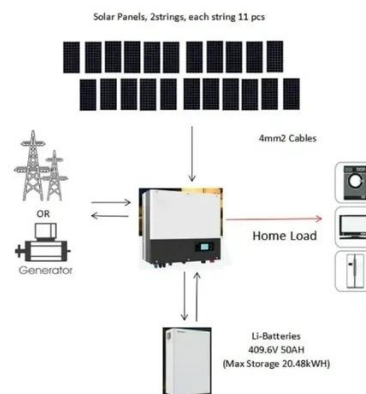


## Power Base Station

Each RF requirement has a corresponding test defined in the LTE test specifications for the base station [87] and the UE [74]. These specifications define the test setup, test procedure, test signals, test ...

## Base Stations

Power consumption: Thus, permanent power supply is needed for the operation of base stations; energy consumption required to operate these facilities contributes significantly to carbon ...





## Contact Us

---

For catalog requests, pricing, or partnerships, please visit:

<https://id2market.eu>

Phone: +34 910 56 87 45

Email: [info@id2market.eu](mailto:info@id2market.eu)

Scan the QR code to access our WhatsApp.

