



Does the 12V inverter charge quickly





Does the 12V inverter charge quickly

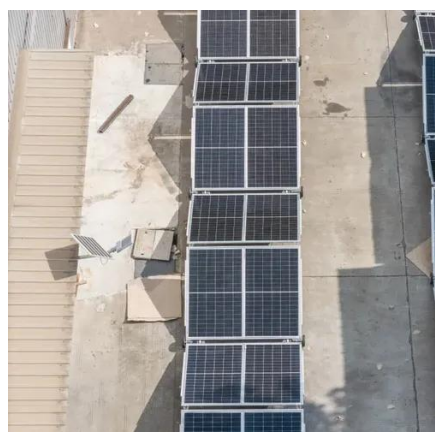


[How long will a 12v battery last with inverter](#)

Most inverters use less than 5% of their rated power when idle. For example, the PowMr 2500W 12V to 220V inverter uses less than 1% when not in use. These estimates assume the ...

How Long Will A 12V Battery Last With an Inverter - Let's Calculate it

But a crucial question lingers: how long will your 12v battery actually last when powering devices through an inverter? This blog post will be your guide to understanding how long your 12v ...



How Long Will A Battery Power An Inverter? Key Factors For 12V And ...

Regular monitoring of the state of charge helps maximize battery life and inverter operation. Collectively, these factors interplay to determine how long a battery can power an inverter, ...

[How Fast Will a Power Inverter Drain Your Battery?](#)

Most inverters use less than 5% of their rated power when idle. For example, the PowMr 2500W 12V to 220V inverter uses less than 1% when not ...



[12 Volt Battery Inverter: How Long it will Last + Calculator](#)

To maximize battery life, it is recommended that you recharge a battery with the recommended battery charger every 3-month to maintain an uppermost performance. Whether your ...



How Long Will A 12v Battery Last With An Inverter? Calculator

A 12 volt 50Ah lithium iron phosphate (LiFP04) battery with regular depth of discharge (DoD) of 80% will run a fully-loaded 1500 watt inverter for 13 minutes. The calculation incorporates ...



[How Fast Will a Power Inverter Drain Your Battery?](#)

Battery life will be shortened faster when the system is loaded with heavy loads, such as desktop PCs, big screens, and the like. Although most power inverters can be used in a car with no ...



[How Fast will a Power Inverter Drain a](#)



Battery?

This then raises the question, how long does it take for a battery to completely discharge and drain fully while connected to an inverter. As we will see, this depends on a number of factors and varies with ...



How Long Will a 12v Battery Last With an Inverter?

Larger inverters often have higher standby power consumption, which can drain the battery more quickly, even when the load is minimal. Conversely, a smaller, more appropriately sized ...

How To Charge Inverter Battery , Tips & Charging Time

The UPS and inverter charging time varies based on several factors, including battery capacity and charger efficiency. Typically, an inverter may take anywhere from 6 to 12 hours to full charge a ...



Can I Use an Inverter to Charge a Battery

Yes, you can use an inverter to charge a battery, but there are several important considerations. Inverters are devices that convert DC (direct current) power from a battery or solar ...



Contact Us

For catalog requests, pricing, or partnerships, please visit:

<https://id2market.eu>

Phone: +34 910 56 87 45

Email: info@id2market.eu

Scan the QR code to access our WhatsApp.

