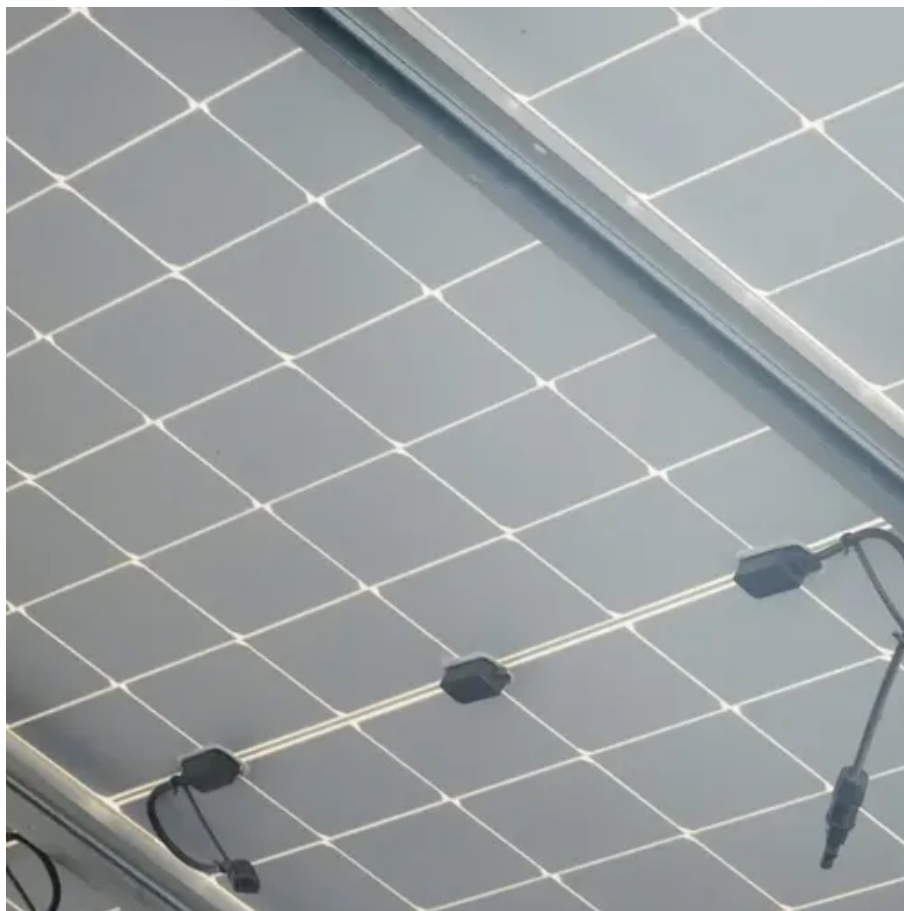




Does the base station have a backup power supply





Overview

No, the Arlo Base Station does not have a built-in battery backup for power outages. During a power outage, this means it will stop operating, which can affect the performance of connected cameras. This feature ensures that your security system continues to operate and monitor your home, even when electricity is not available. Base batteries run in two directions, which is how Base is able to keep. In practice, when network operators and engineers search for this term, they are primarily concerned with backup power systems for telecom base stations, network access sites, and central offices. Key Requirements: Capacity & Runtime: The battery should provide sufficient energy storage to cover potential power.



Does the base station have a backup power supply

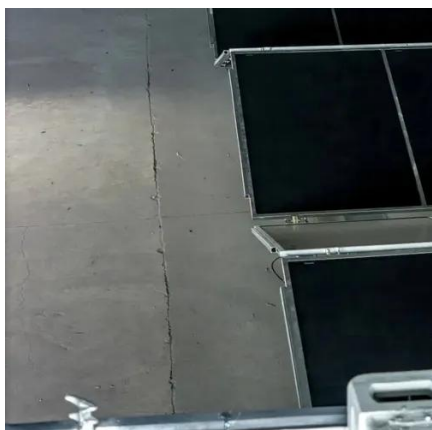


Does Arlo have any form of battery backup?

If a power outage has occurred and the base station or SmartHub loses power, local storage will not persist. Some users attach a backup power supply to their SmartHub to allow local ...

How long does your Base battery last during an outage?

You should always have at least 5 hours (if you have a single battery) or 10 hours (if you have two batteries) of backup at low energy usage during normal operations.

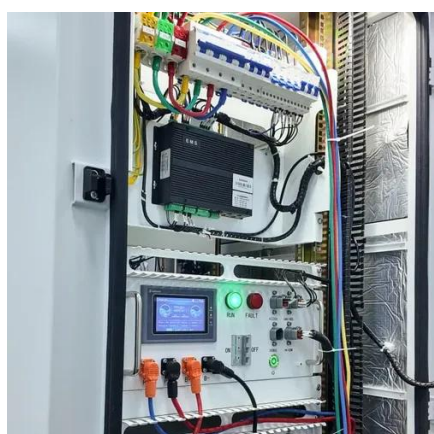


Communication Batteries: Why Telecom Base Stations Have Unique ...

The phrase "communication batteries" is often applied broadly, sometimes including handheld radios, emergency devices, or general-purpose backup batteries. In practice, when ...

Arlo Base Station: Does It Have Battery Backup for Power Outages?

No, the Arlo Base Station does not have a built-in battery backup for power outages. The Arlo Base Station relies on a direct power source to function. During a power outage, this means it ...



How the Base battery works: A complete guide to grid connectivity and

Learn how Base's home battery system works, from grid connectivity to outage protection. Discover how our intelligent software optimizes your home's energy use and provides reliable backup power.

Understanding Backup Battery Requirements for Telecom Base Stations

Telecom base stations require reliable backup power to ensure uninterrupted communication services. Selecting the right backup battery is crucial for network stability and efficiency.



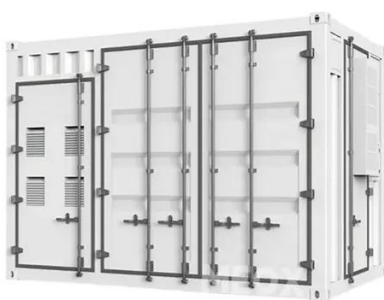
[UPS Batteries in Telecom Base Stations - leagend](#)

Telecom base stations are typically located in remote areas or urban locations with fluctuating power quality. While the grid supplies the primary power, these base stations must have a ...



[Base Power Battery & Energy Plans and Pricing , Base ...](#)

Get a clear, no-surprises energy plan with Base Power. Guaranteed below-market electricity rates, no hidden fees--plus built-in home backup for ultimate reliability.



[What Powers Telecom Base Stations During Outages?](#)

Telecom batteries provide instantaneous power during grid outages via electrochemical energy storage. VRLA batteries use absorbed glass mat (AGM) technology for spill-proof operation, ...



Contact Us

For catalog requests, pricing, or partnerships, please visit:

<https://id2market.eu>

Phone: +34 910 56 87 45

Email: info@id2market.eu

Scan the QR code to access our WhatsApp.

