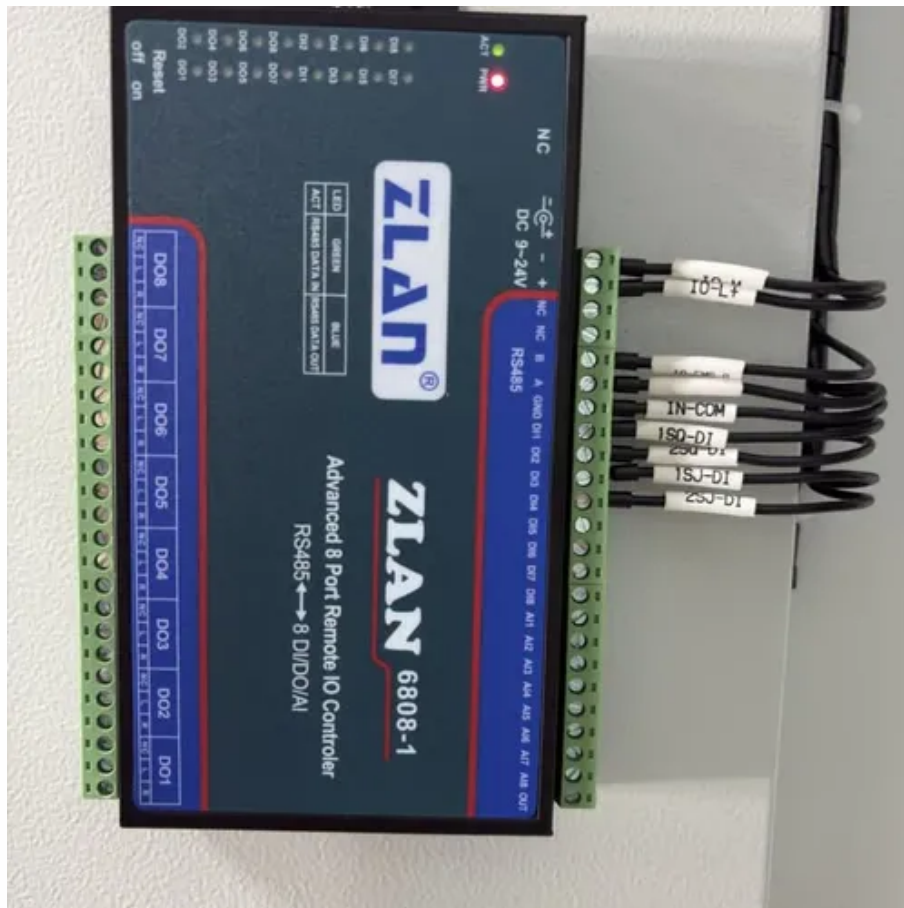




Does the communication base station have high voltage communication power





Overview

In modern communication networks—from 4G and 5G to future 6G—mobile base stations form the backbone of wireless connectivity. The phrase “communication batteries” is often applied broadly, sometimes. Communication base station power supply in the tower room power supply system is an essential and important part of the mobile communication network. Does the communication base station have high voltage for communication Page 1/5 SolarInnovate Energy Solutions Does the communication base station have high voltage for communication Powered by SolarInnovate Energy Solutions Page 2/5 Overview Why are base stations important in cellular.



Does the communication base station have high voltage communication



What is a Base Station? -- From Communication Core to Thermal ...

It's important to note that a significant amount of heat is generated as these units process and amplify signals at high speeds. According to the law of conservation of energy, most of the ...

UPS Batteries in Telecom Base Stations - leagend

In today's always-connected world, telecom base stations are the backbone of communication networks, ensuring seamless connectivity for mobile phones, data services, and ...

Commercial and Industrial ESS

Air Cooling / Liquid Cooling

- Budget Friendly Solution
- Renewable Energy Integration
- Modular Design for Flexible Expansion

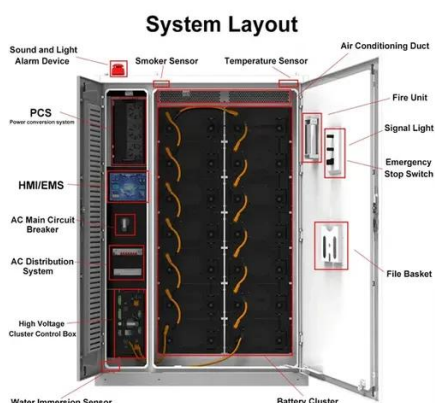


Does the communication base station have high voltage for ...

Power supply: The base station requires a power supply to operate. It may be connected to the electrical grid or have a backup power source like batteries or generators in case of power outages.

Why does the communication base station use -48V power supply?

Because the smallest communications network and communications engineering are in the telephone network, the telecom bureau power supply voltage are 48V.

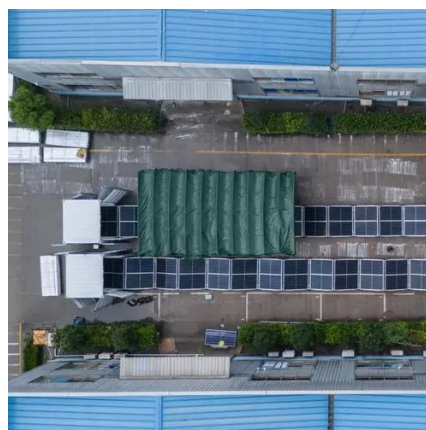


Does the communication base station have high voltage ...

Communication base station power supply in the tower room power supply system is an essential and important part of the mobile communication network. The current communication power supply ...

Communication base stations and power systems

The energy storage battery for each base station has a rated capacity of 18 kWh, a maximum charge/discharge power of 3 kW, a SOC range from 10% to 90%, and an efficiency of 0.85.



Why Do Telecom Base Stations Use -48V DC Power?

In modern communication networks--from 4G and 5G to future 6G--mobile base stations form the backbone of wireless connectivity. Behind this infrastructure lies a seemingly minor yet critical design ...

Application of smart power usage on



the communication base station

The power parameters of the communication base station can be monitored in real time by installing smart meters, sensors, and other equipment, such as voltage, current, power, electric ...



Communication Base Station Backup Battery

When natural disasters cut off power grids, when extreme weather threatens power supply safety, our communication backup power system with intelligent charge/discharge management and military ...

Communication Batteries: Why Telecom Base Stations Have Unique

...

The phrase "communication batteries" is often applied broadly, sometimes including handheld radios, emergency devices, or general-purpose backup batteries. In practice, when ...





Contact Us

For catalog requests, pricing, or partnerships, please visit:

<https://id2market.eu>

Phone: +34 910 56 87 45

Email: info@id2market.eu

Scan the QR code to access our WhatsApp.

