



Does the inverter not support lithium batteries





Overview

While lithium batteries can't work with every inverter, most modern solar and off-grid inverters now offer lithium compatibility. Let's examine the key compatibility factors for lithium. Before you decide to pair a lithium-ion battery with your existing inverter, it's essential to consider several factors. Not all inverters are created equal. Amp-hours (Ah) is the size of your energy reserve. The REAL King: Continuous Discharge Current (Amps): Pay attention here, because this is everything. This article analyzes these compatibility essentials and introduces how GSL.



Does the inverter not support lithium batteries



[Compatibility of Lithium-Ion Batteries with Existing ...](#)

While many inverters can be adapted to work with lithium-ion ...

Compatibility of Lithium-Ion Batteries with Existing Inverters

While many inverters can be adapted to work with lithium-ion batteries, it's essential to check the specifications and compatibility of your particular inverter model.



[Can Lithium Batteries Work With Any Type of Inverter?](#)

When setting up solar energy systems or home energy storage, a common question arises: Are lithium batteries compatible with all inverters? The short answer is no - proper inverter ...

How to Choose the Right Inverter for a Lithium Battery System

Choosing the wrong inverter for lithium battery use can lead to inefficiency, system instability, or even battery damage. Unlike lead-acid systems, lithium batteries operate across a different voltage curve, ...



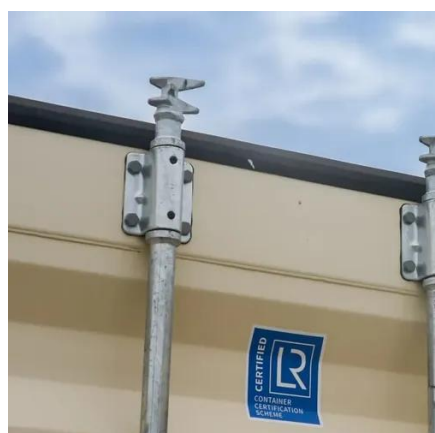
[Do You Need a Special Inverter for Lithium Batteries?](#)

Choosing a suitable inverter for lithium batteries involves looking for features that enhance compatibility, such as advanced charge controllers and customizable settings.



[Do I need a special inverter for Lithium battery?](#)

You don't necessarily need a special inverter for a lithium battery, but compatibility is critical. Here are the important points to consider when deciding the correct answer. The confusion ...



The Ultimate Guide to Matching Your Lithium Battery and Inverter

We see it constantly out in the field, and it's always the same frustrating issue: the battery and the inverter are not properly matched. Get this one thing wrong, and you're signing up for chronic ...

Compatibility Analysis Between



Lithium Batteries and Inverters & GSL

Nominal Voltage Alignment: The nominal voltage of the lithium battery pack (e.g., 48V system) must fall within the inverter's input voltage range. GSL Energy's 5 KVA hybrid inverter, for ...



Lithium Battery Combined With Inverter: Key Compatibility Points

Lithium batteries, including lithium-ion batteries and lithium iron phosphate batteries (LiFePO4), do not necessarily need to be paired with a specially designed inverter.

Can all inverters use lithium batteries?

Not all inverters are designed to work with lithium batteries, so it's essential to ensure that your chosen inverter can support this type of battery. The first thing you need to check is the ...



Do Lithium Batteries Need a Special Inverter? , IMPROVE BATTERY

Lithium batteries, including lithium-ion batteries and lithium iron phosphate (LiFePO4) batteries, don't necessarily require a special inverter specifically designed for lithium batteries.



Contact Us

For catalog requests, pricing, or partnerships, please visit:

<https://id2market.eu>

Phone: +34 910 56 87 45

Email: info@id2market.eu

Scan the QR code to access our WhatsApp.

