



Does wind power from communication base stations undergo environmental impact assessment





Overview

The assessment of suitability of a certain location for the installation of a wind farm requires the consideration of multiple impact issues: visual aspects, environmental effects such as the impact on wildlife and birds, shadow flicker from wind turbines and noise. The assessment of suitability of a certain location for the installation of a wind farm requires the consideration of multiple impact issues: visual aspects, environmental effects such as the impact on wildlife and birds, shadow flicker from wind turbines and noise. As wind energy technology expands its geographic reach and technologies evolve, wildlife impacts will grow and change—creating an evolving need for effective technological, operational, and siting solutions and for research to inform solution designs. Renewable energy siting refers to a complex. The increasing global deployment of wind energy has given rise to concerns about potential adverse effects on certain wildlife species and habitats. The United States and European nations use environmental impact assessments (EIAs) to evaluate the environmental effects of wind energy and inform. This presents a comprehensive on the impact of wind turbines on the telecommunication services. The describes the potential affections to several telecommunication services, the methodology to evaluate this impact, and mitigation measures to be taken in case of potential degradation, both. es are harnessing the benefits of wind energy. Wind development provides new income for landowners, new tax revenue to fund schools and services, a d creates local career and job opportunities.



Does wind power from communication base stations undergo environ



[DOES Definition & Meaning , Dictionary](#)

DOES definition: a plural of doe. See examples of does used in a sentence.

IEA Wind White Paper Cumulative Effects Analysis for Wind ...

The United States and European nations use environmental impact assessments (EIAs) to evaluate the environmental effects of wind energy and inform wind energy planning, siting, and operational ...



A Study of How Wind Farms Will Affect Telecommunications ...

The assessment of suitability of a certain location for the installation of a wind farm requires the consideration of multiple impact issues: visual aspects, environmental effects such as the impact on ...



DOES Definition & Meaning

The meaning of DOES is present tense third-person singular of do; plural of doe.



DOES , English meaning

DOES definition: 1. he/she/it form of do 2. he/she/it form of do 3. present simple of do, used with he/she/it. Learn more.

Impact analysis of wind farms on telecommunication services

If the potential impact is detected before the installation of the wind farm, locations and dimensions of wind turbines can be adapted to avoid, or at least minimize, the impairment to radars.



TAX FREE    

Product Model
HJ-ESS-215A(100KW/215KWh)
HJ-ESS-115A(50KW 115KWh)

Dimensions
1600*1280*2200mm
1600*1200*2000mm

Rated Battery Capacity
215KWH/115KWH

Battery Cooling Method
Air Cooled/Liquid Cooled



Do VS Does , Rules, Examples, Comparison Chart & Exercises

Master 'Do vs Does' with this easy guide! Learn the rules, see real examples, and practice with our comparison chart. Perfect for Everyone.

"Do" vs. "Does": How Do You Tell The



Difference?

Both do and does are present tense forms of the verb do. Which is the correct form to use depends on the subject of your sentence. In this article, we'll explain the difference between do ...



Fact Sheet: Wind Energy and Telecommunications

Wind energy systems often operate without interrupting telecommunications services, however in some cases the placement of a turbine could lead to the disruption of communications signals.

Environmental Impact Assessment of Wind Power Generation

Projects of wind turbine facilities are accepted in accordance with the environmental impact assessment law using the new guidance noise level and the procedure of the environmental impact statement.



Wind energy environmental assessment requirements and ...

across jurisdictions based on when an EA is required for a wind energy development (see Table 3). This includes EA systems that require some form of assessment for all wind energy projects, ...

Wind energy environmental



assessment requirements and processes: ...

A wind energy project might require an EA if it is determined that the project is likely to have a significant impact on the environment, create widespread public concern, have an effect on a ...



does verb

Definition of does verb in Oxford Advanced Learner's Dictionary. Meaning, pronunciation, picture, example sentences, grammar, usage notes, synonyms and more.

Mastering 'Do,' 'Does,' and 'Did': Usage and Examples

'Do,' 'does,' and 'did' are auxiliary verbs (also known as helping verbs) in English. They are primarily used to form questions, negative statements, and emphatic assertions.



Environmental Research and Wind Energy Projects

This includes engaging with stakeholders, facilitating environmental research and disseminating results on cost-effective approaches to monitoring and minimizing the environmental impacts of land-based ...

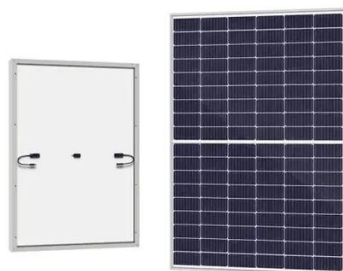


Environmental Impact Assessment of



Power Generation Systems ...

This paper presents the comparative environmental impact assessment of a diesel gas (DG) and hybrid (PV/wind/hydro /diesel) power system for the base station sites.

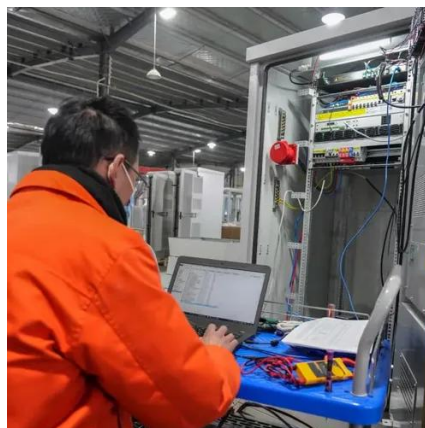


[Grammar: When to Use Do, Does, and Did](#)

We've put together a guide to help you use do, does, and did as action and auxiliary verbs in the simple past and present tenses.

DOES definition in American English , Collins English Dictionary

Examples of 'does' in a sentence does These examples have been automatically selected and may contain sensitive content that does not reflect the opinions or policies of Collins, or its parent ...



Wind Energy

An environmental impact assessment (EIA) is an assessment of the possible impact (positive or negative) that a proposed project may have on the environment, considering natural, social and ...

Using "Do" and "Does": Grammar



Rules, Examples, and Practice ...

Discover when to use do and does in English grammar. Learn the rules for questions and negatives, see clear examples, and practice with easy exercises to master correct usage.





Contact Us

For catalog requests, pricing, or partnerships, please visit:

<https://id2market.eu>

Phone: +34 910 56 87 45

Email: info@id2market.eu

Scan the QR code to access our WhatsApp.

