



# Does wind power generation depend on wind





## Does wind power generation depend on wind



### Wind Power Generation

Abstract Wind generation is currently the major form of new renewable, generation in the world. The wind power is totally dependent on wind flow, due to randomness and uncertainty of wind flow, the ...

### Wind Energy

Wind energy is a form of carbon-free, renewable energy, which today makes electricity at a lower average cost than any other form of new-built energy.

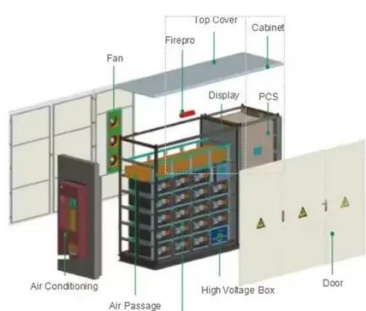


### Wind Energy

Scientists and engineers are using energy from the wind to generate electricity. Wind energy, or wind power, is created using a wind turbine.

### [Frequently Asked Questions about Wind Energy](#)

This page answers frequently asked questions about wind energy. Refer to our information resources to access additional energy basics, publications, maps, and multimedia resources.



## Wind Energy Factsheet

Wind Resources and Potential Approximately 2% of solar energy striking Earth's surface is converted into kinetic energy in wind.<sup>1</sup> Wind turbines convert this kinetic energy to electricity without ...

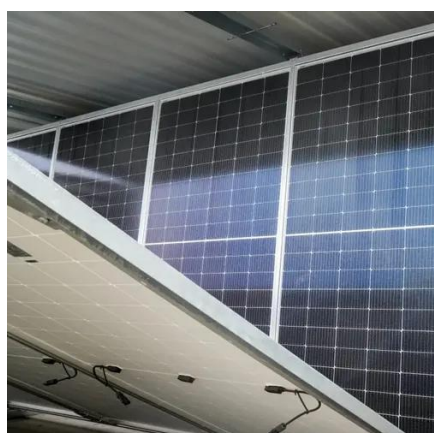
### [Wind power , Description, Renewable Energy, Uses, ...](#)

Wind power is a form of energy conversion in which turbines convert the kinetic energy of wind into mechanical or electrical energy that can be used for power. Wind power is considered a ...



### [How Does Wind Energy Work: Complete Guide To Wind Power ...](#)

Learn how wind energy works with our comprehensive guide covering wind turbine technology, energy conversion, and renewable power generation. Updated 2025.



## Electricity generation from wind



Wind electricity generation has increased significantly. Wind electricity generation has grown significantly in the past 30 years. Advances in wind-energy technology have decreased the ...



- ✓ IP65/IP55 OUTDOOR CABINET
- ✓ WATERPROOF OUTDOOR CABINET
- ✓ 42U/27U
- ✓ OUTDOOR BATTERY CABINET

### What Affects Wind Generation?

Wind results from the movement of air due to atmospheric pressure gradients. Wind flows from regions of higher pressure to regions of lower pressure. The larger the atmospheric pressure gradient, the ...

### What factors affect wind power generation?

Detailed Explanation : Factors Affecting Wind Power Generation Wind power generation depends on the amount of energy available in the moving air and how effectively a wind turbine can ...





## Contact Us

---

For catalog requests, pricing, or partnerships, please visit:

<https://id2market.eu>

Phone: +34 910 56 87 45

Email: [info@id2market.eu](mailto:info@id2market.eu)

Scan the QR code to access our WhatsApp.

