



Fengjun 5 generator carbon brush length





Overview

These brushes have 2 holes that are 1/4" in diameter and are spaced 1" apart. Sometimes spacers are needed for a proper transmission for the carbon brush. They should not be too smooth/glossy, nor too rough, in order to ensure the high friction it generates. If the brush design includes a Red Top, the length measurement should include the pad. To enable it to fulfill its function, we need to consider three types of parameters: Considering those parameters, together with technical information supplied by your teams, our experts will be able to select the. Generator carbon brushes are essential electrical components that transfer current between stationary and rotating parts in generators. These carbon graphite sliding contacts require proper selection, regular maintenance, and timely replacement to ensure optimal brush performance. GE enhancements allow for safe removal and installation of the collector brushes with the generator online, easing its replacement (no special tools required) and providing greater reliability during power plant operation.



Fengjun 5 generator carbon brush length



[carbon-brushes-for-motors-and-generators-mersen-1605](#)

A carbon brush sample, even worn out, will generally enable us to determine the main dimensions except the brush height, which has to be selected from the list issued by the I.E.C. according to the ...

Generator Brushes , McMaster-Carr

Choose from our selection of generator brushes, including carbon brushes, carbon brush assortments, and more. Same and Next Day Delivery.



[Fengjun 5 generator carbon brush replacement](#)

Expand generator brush life: Benefit from less collector brush wear, a decreased brush exchange time and carbon brush lifespan extension due to improved maintainability and without the need for tools.



[Generator Carbon Brush Guide: Selection, Maintenance Tips](#)

How do I know my generator carbon brushes need replacement? Warning signs include reduced power output, visible sparking, burning smell, excessive noise, or brushes worn to less than ...



Motor & Generator Brush Product Line

The length of the shunt is measured from the top of the carbon or top of the pad on Red Top brushes to the center of the terminal or cap where connection is to be made.

5 Generator Carbon Brush Assembly

These brushes have 2 holes that are 1/4" in diameter and are spaced 1" apart. The first carbon stick is 5/8" from the backside of the brush. The carbon sticks are spaced on 5/8" centers and the same ...



Fengjun 5 generator carbon brush

We offer fabricated and pressed-to-size carbon brushes designed to maximize brush life and performance for any given application: Industrial, Fractional Horse Power (FHP), Slip Ring,

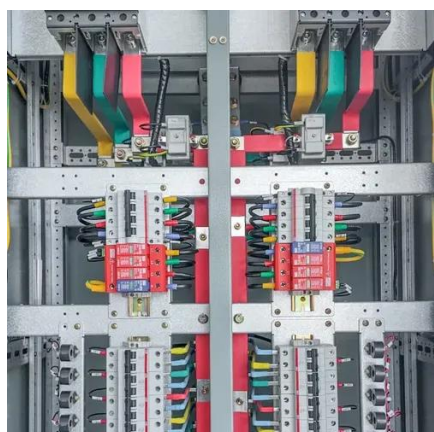


Carbon Brush for Generators , Schunk



Carbon Technology

Schunk carbon brushes for generators are used worldwide in a variety of energy and industrial applications. Depending on location and load, the demands vary - from high current density to ...



Carbon Brushes

Our portfolio ranges from carbon brushes and brush holders to brush rockers and slip rings. We offer high-quality carbon and metal-graphite brushes worldwide - even for challenging applications, for ...

5 Carbon Brush Technical Guide Mersen

Carbon brushes are a sliding contact used to transmit electrical current from a static to a rotating part in a motor or generator. A carbon brush plays an essential part in the operation of electrical machines.





Contact Us

For catalog requests, pricing, or partnerships, please visit:

<https://id2market.eu>

Phone: +34 910 56 87 45

Email: info@id2market.eu

Scan the QR code to access our WhatsApp.

