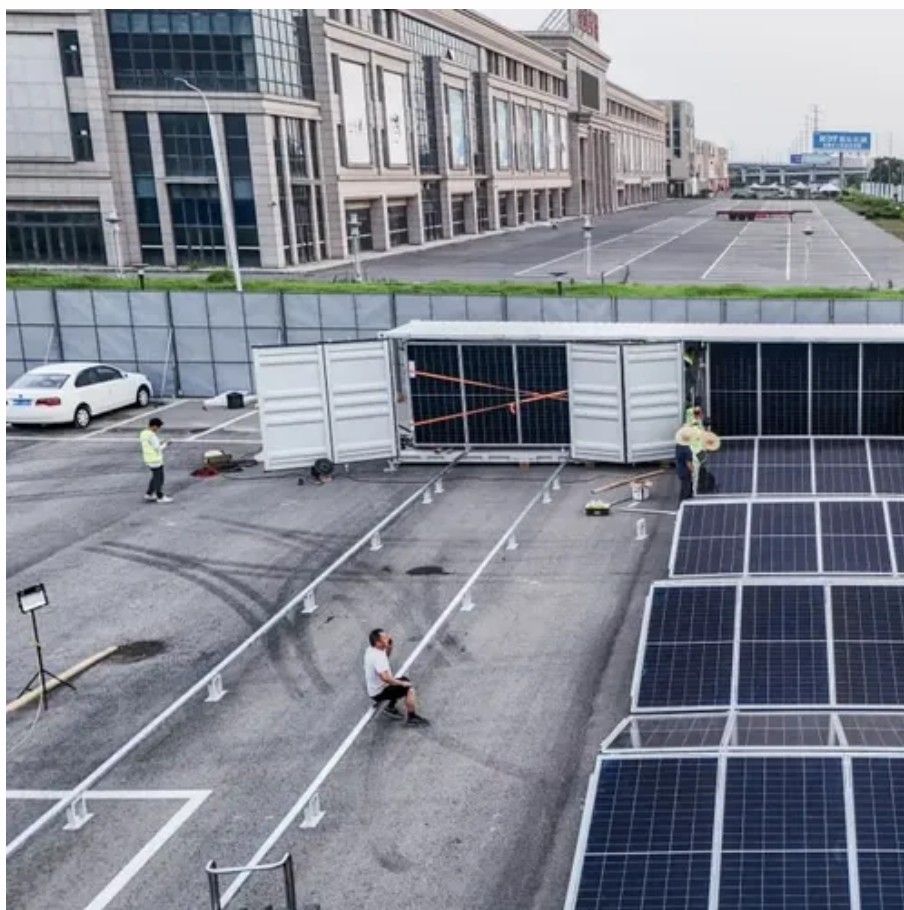




GoodWe Photovoltaic Energy Storage ET System





GoodWe Photovoltaic Energy Storage ET System



GoodWe Rolls Out Three-Phase All-in-One Storage Solution for Homes ...

Following the strong market response to its single-phase ESA Series, GoodWe today announced the launch of its new three-phase All-in-One solution designed for residential and small commercial and ...

GoodWe launches three phase ESA All in One Energy Storage Solution ...

New three phase ESA all in one system integrates solar, storage and energy management in a single modular solution. Designed for easy installation and flexible expansion up to 108 kWh of storage and ...



ET LV Series

With seamless switching in under 4ms and full compatibility with generators--including battery charging support--the ET LV ensures your essential loads stay powered without interruption, even during outages.

[GoodWe Launches Three-Phase ESA All-in-One Energy System](#)

GoodWe introduces its three-phase ESA all-in-one system for residential and small commercial use, delivering efficient, scalable energy storage solutions.



Energy Storage Solutions

The GoodWe ES series bi-directional energy storage inverter can be used for both on-grid and off-grid PV systems, with the ability to control the flow of energy intelligently.



Solar Inverters

This page highlights GoodWe's extensive lineup of solar energy solutions, featuring residential and commercial grid-tied inverters, utility-scale systems, energy storage options, batteries, EV chargers, software and ...



ET Series

The GoodWe ET series is a Three-Phase, high-voltage, energy storage inverter that provides enhanced energy independence and maximises self-consumption for reduced electricity bills, through an export limit feature ...



GoodWe ET 25-50kW



The ET Series has been improved for compatibility with high-power modules, with a maximum of 21A input current per string. The 150% DC input oversizing and 98.1% maximum efficiency, drive your inverter to its full ...



[GoodWe PV + Energy Storage System in Jordan](#)

The system combines GoodWe's ET hybrid inverter platform with advanced battery storage and intelligent energy management to ensure seamless operation, efficient energy utilization, and grid



[Residential & Small Commercial Energy Storage Solutions](#)

The GoodWe ET series is a Three-Phase, high-voltage, energy storage inverter that provides enhanced energy independence and maximises self-consumption for reduced electricity bills, through an export limit feature ...





Contact Us

For catalog requests, pricing, or partnerships, please visit:

<https://id2market.eu>

Phone: +34 910 56 87 45

Email: info@id2market.eu

Scan the QR code to access our WhatsApp.

