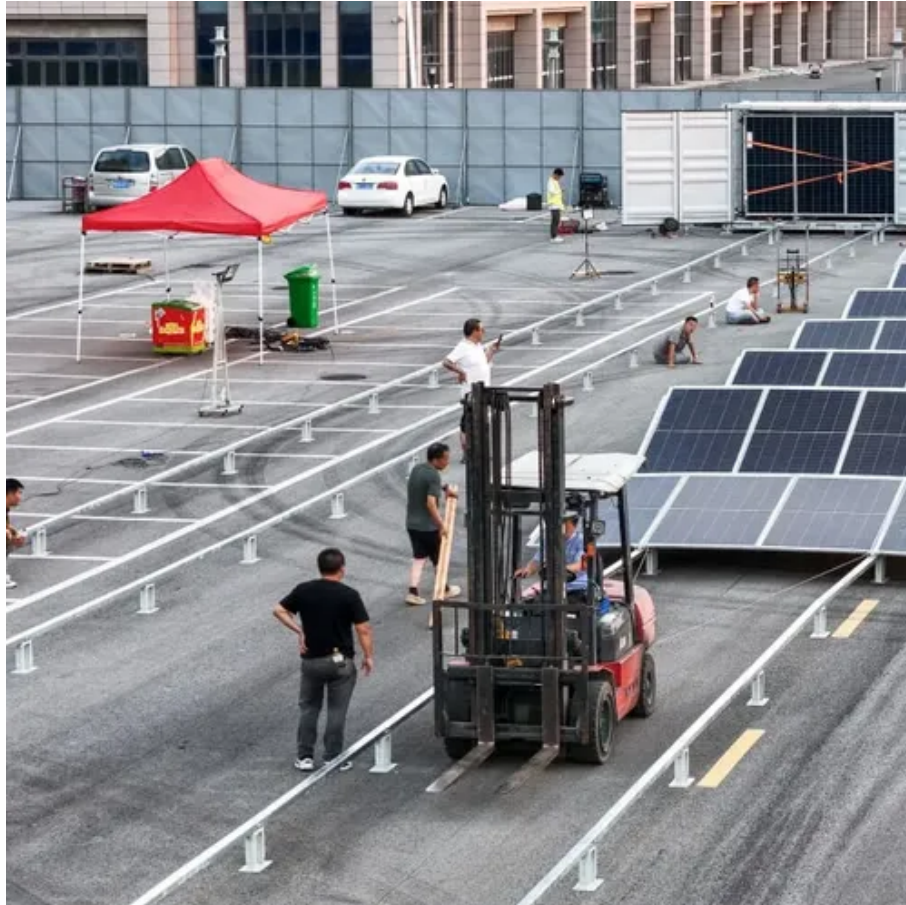




Grid-connected inverter electrical terminal connected to home appliances





Overview

A solar grid-connected inverter serves as a critical component in a solar power system, transforming the direct current (DC) generated by solar panels into alternating current (AC), which is usable by home appliances or the grid. An inverter is one of the most important pieces of equipment in a solar energy system. These panels capture sunlight and convert it into DC power. That power isn't yet usable for most home appliances.



Grid-connected inverter electrical terminal connected to home appliances



[Grid-Tied Inverter , How it works, Application](#)

Explore the role of grid-tied inverters in renewable energy, their benefits, considerations, and future advancements in our comprehensive guide.

[The Ultimate Guide to Inverter Wiring for Your Home](#)

Inverter wiring refers to the electrical connections and components needed to connect an inverter to your home's electrical system. Inverter Types. There are two main types of inverters commonly used in ...



[Solar Integration: Inverters and Grid Services Basics](#)

In order to provide grid services, inverters need to have sources of power that they can control. This could be either generation, such as a solar panel that is currently producing electricity, or storage, ...



Introduction to Grid Forming Inverters: A Key to Transforming our

...

Why do we need Grid-forming (GFM) Inverters in the Bulk Power System? There is a rapid increase in the amount of inverter-based resources (IBRs) on the grid from Solar PV, Wind, and Batteries.

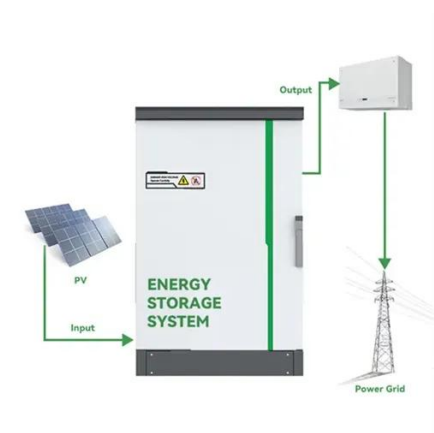


[How Solar Inverter is Connected to the Grid](#)

Learn how solar inverter is connected to the grid and how each inverter functions when connected or not connected to the grid.

[Solar and Inverter Systems: Grid, Backup & Generator Guide](#)

For many, the answer comes down to two systems: solar and power inverter setups, and inverter generator support. These technologies have moved from niche to practical. They're helping ...



How to Connect Hybrid Inverter to Grid - Expert Tips -- Direct Solar Power

Learn how to connect a hybrid inverter to the grid safely and efficiently. Discover setup steps, wiring tips, and net-metering rules with Direct Solar Power USA.

Off Grid Solar Inverters: Complete



2025 Buyer's Guide & Installation Tips

Complete guide to off-grid solar inverters. Compare top brands, sizing guides, installation tips, and expert recommendations for 2025. Get reliable off-grid power.



The Ultimate Guide to On-Grid Inverters: How They Work and Why

...

What Is a On-Grid Inverter? A On-Grid inverter, also known as a grid-interactive or grid-connected inverter, is a device that converts the direct current (DC) electricity generated by solar panels into ...

[How to use solar grid-connected inverter, NenPower](#)

A solar grid-connected inverter serves as a critical component in a solar power system, transforming the direct current (DC) generated by solar panels into alternating current (AC), which is ...





Contact Us

For catalog requests, pricing, or partnerships, please visit:

<https://id2market.eu>

Phone: +34 910 56 87 45

Email: info@id2market.eu

Scan the QR code to access our WhatsApp.

