



Heat exchange principle diagram of wind turbine generator set



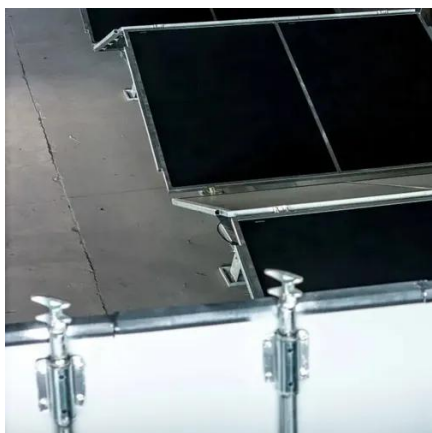


Overview

This video highlights the basic principles at work in wind turbines and illustrates how the various components work to capture and convert wind energy to electricity. Wind turbines work on a simple principle: instead of using electricity to make wind—like a fan— wind turbines use wind to make electricity. Wind is a form of solar energy caused by a. A wind turbine is made up of two major components and having looked at one of them, the rotor blade design in the previous tutorial, we can now look at the other, the Wind Turbine Generator or WTG's. A mechanical windmill can also be coupled to a mechanical heat pump, which.



Heat exchange principle diagram of wind turbine generator set



Heat transfer in wind turbines

Managing heat within wind turbines is crucial as excessive heat can lead to reduced efficiency and damage to the turbine's components. Let's explore how heat transfer occurs in wind ...

Working Principle of Wind Turbine

Working Principle of Wind Turbine: The turbine blades rotate when wind strikes them, and this rotation is converted into electrical energy through a connected generator.



Wind Turbine Generator Working Principle

The electrical machine most commonly used for wind turbines applications are those acting as generators, with the synchronous generator and the induction generator (as shown) being ...



How a Wind Turbine Works

Wind turbines work on a simple principle: instead of using electricity to make wind--like a fan-- wind turbines use wind to make electricity. Wind turns the propeller-like blades of a turbine around a rotor, ...



[A Visual Breakdown: How Wind Turbine Systems Work](#)

Learn about the components and workings of a wind turbine system with our informative wind turbine diagram. Explore how wind energy is converted into electricity.



[Heat exchange principle of wind turbine generator set](#)

In a wind turbine, kinetic energy is converted to electrical energy and the losses are transferred into heat. Generally, larger generators create more heat than smaller versions.



LIQUID COOLING ENERGY STORAGE SYSTEM

EMS real-time monitoring
No container design
flexible site layout



Cycle Life
≥ 8000

Nominal Energy
200kwh

IP Grade
IP55

Heat Exchangers

ABS wind turbine heat exchangers are adapted to the requirements of leading manufacturers and are optimized to provide sufficient cooling and low energy consumption. The HEAT EXCHANGERS ...

[Wind Turbine Generators for Wind Power](#)



Plants

The principle of wind turbine operation is based on two well-known processes: Conversion of kinetic energy of moving air into mechanical energy using aerodynamic rotor blades and a variety of ...

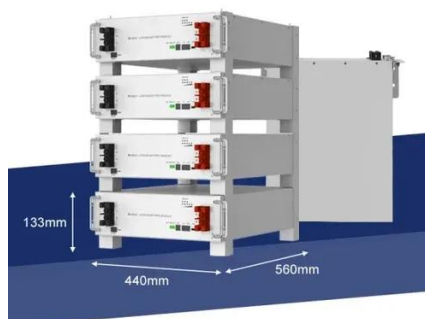


Wind turbine gearbox heat exchange mechanisms and wind power ...

The invention discloses a kind of wind turbine gearbox heat exchange mechanisms, including heat-exchanging component and the air intake passage and air-out passage that are ...

How Do Wind Turbines Work?

This video highlights the basic principles at work in wind turbines and illustrates how the various components work to capture and convert wind energy to electricity.





Contact Us

For catalog requests, pricing, or partnerships, please visit:

<https://id2market.eu>

Phone: +34 910 56 87 45

Email: info@id2market.eu

Scan the QR code to access our WhatsApp.

