



HI160 generator wind shield outer edge diameter





Overview

25"Recommended Specification for Speed Governors of Hydraulic Turbines". For small hydro up to 5 MW units size standard turbines are recommended. For units above 5 MW size infor ck diameter: 200 to 250mm oPacki tates and causes the generator to rotate while generates electric power. drivetrain components, including main shaft bearing, gearbox, gen range is approximately 90 degrees, with the zero-degree position being with the blade flat to the prevailing wind. 7 Product. Company Introduction:Hunan Sunny Hydropower Equipment Corporation (hereinafter abbreviated as "SHPE") was launched by Sundo Technology (HK) Limited in 2004, taking over Hunan Xinning Hydropower Equipment Factory which was established in 1958. The former factory has more than four decades of. The Francis type turbines manufactured by the Fuchun are compact in structure, reasonable in design, convenient in operation and maintenance and excellent in efficiency. With many. POA Extra Yes Ask Additional Comments.



HI160 generator wind shield outer edge diameter



[Installation, Operation, and Maintenance Manual](#)

Product Description 12. Installation ..16.

Dimensions and specifications of wind shield for hydro turbine ...

dimensions are outside diameter of 98mm and inside diameter of 78.4mm. Indexed Terms: Low head power plant, hydropower system, Kaplan turbine, head, turbine output, hollow rotor shaft



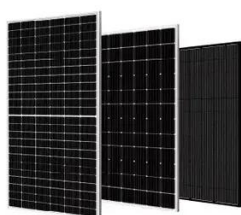
[Hydroturbine Francis HI160 Medium Head \(29-175 Meter\) ...](#)

Hydroturbine Francis HI160 Medium Head (29-175 Meter) /Hydropower/ Hydro (Water) Turbine



95-9902-3000-+-95-9902-3000_1_4.xls

It will handle sewage, slurries and liquids with solids up to 1" in diameter. Continuously operated Godwin venturi air ejector priming device requiring no form of periodic adjustment or control. Dry-running ...



Horizontal Francis Turbine Unit - Fuchun Industry Development Co.,Ltd

The Francis turbines manufactured by the Fuchun, are ranging from 10 to 300m in water head, 100kW to 50MW in capacity and 0.35 to 4.0 m in runner diameter. For more information, please send us an ...

[Technical Documentation Wind Turbine Generator Systems ...](#)

With a rotor size of 105 m, the V105-3.45 MWTM IEC IA is the turbine that fits the most severe wind conditions. It has an extremely robust design for tough site conditions and is especially ...



[WE STOCK BOTH NEW AND GOOD USED GODWIN PARTS](#)

We have multiple units in stock. GWO order or sold to instruction.





Turbine and Generator Specifications , PDF , Gas Technologies

It lists information for multiple series including HL110-LJ, HL110-WJ, HL160-WJ, and HL160-LJ turbines with varying parameters like head from 40 to 165 meters and power output from 181 to 46488 kilowatts.



What is the outer diameter of the generator wind shield

But what size generator do you need? To figure this out, you need to add up the wattage of all the appliances you want it to power simultaneously, plus the highest-powered item you want to be able ...

HL160M Dri-Prime® Pump

The Godwin Dri-Prime HL160M pump offers flow rates to 2140 USGPM and has the capability of discharge pressures to 268 psi. The HL160M is able to automatically prime to 28' of suction lift from ...





Contact Us

For catalog requests, pricing, or partnerships, please visit:

<https://id2market.eu>

Phone: +34 910 56 87 45

Email: info@id2market.eu

Scan the QR code to access our WhatsApp.

