



Household solar energy is brightest at 600 watts





Overview

A 600w solar panel demonstrates that it can produce up to six hundred watts of electricity per hour when exposed to peak sunlight. This rating serves as a crucial parameter in evaluating how well a solar panel will fulfill specific energy requirements. Market Positioning in 2025: While 750W+ panels are now commercially available, 600W panels remain a mainstream choice offering proven reliability and cost-effectiveness, with conversion efficiencies up to 25% through advanced N-type and half-cell technologies. The wattage is used to measure its efficiency in power output capacity. Right now, most panels on the market sit between. The brightness of solar street lights can vary significantly, often measured in watts; typically, solar street lights range from 20 watts to 200 watts, with the brightest models reaching up to 300 watts. The most efficient units utilize advanced LED technology, which enhances lumen output while. Finding the best 600 watt solar panels can enhance your outdoor adventures, RV trips, or off-grid living with reliable, sustainable energy.



Household solar energy is brightest at 600 watts



[Household solar energy is brightest at 600 watts](#)

A 600-watt solar panel is a robust and efficient choice for home solar energy systems. On a bright day, one 600-watt panel may generate roughly 600 watts or 600-watt-hours per hour.

Best 600 Watt Solar Panels for Efficient Camping and Off-Grid Power

This article reviews top-rated 600W solar panels and kits, selected for their high efficiency, durability, and compatibility with various power stations and applications. Whether you ...

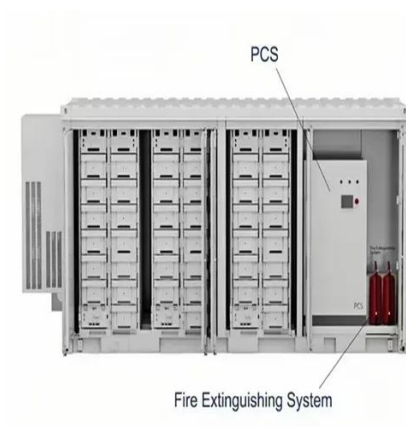


600 Watt Solar Panel Insights

Discover the benefits of our 600 watt solar panel. Boost your energy efficiency today with our top-rated 600 watt solar panel options!

[Highest Watt Residential Solar Panels 2025 \[Complete Guide\]](#)

How many watts is the highest residential solar panel? The highest wattage residential solar panels currently available reach 670 watts for commercial-sized residential applications, with ...



How many watts is 600w solar energy?

For instance, when discussing 600 watts, it denotes a solar panel's capability to generate 600 watts of electricity at peak performance. This peak performance generally occurs when sunlight ...

How Much Energy Does A Solar Panel Produce? , EnergySage

In fact, efficiency matters more than wattage when comparing solar panels--a higher wattage can simply mean that a panel is larger. The panels you choose help determine how much ...



The Ultimate Guide to Choosing the Best 600 Watt Solar Panel for ...

Having worked with dozens of clients and generating over 100,000 kWh a year, we're here to help you find the perfect 600 Watt Solar Panel for your energy needs and make your switch to renewable ...

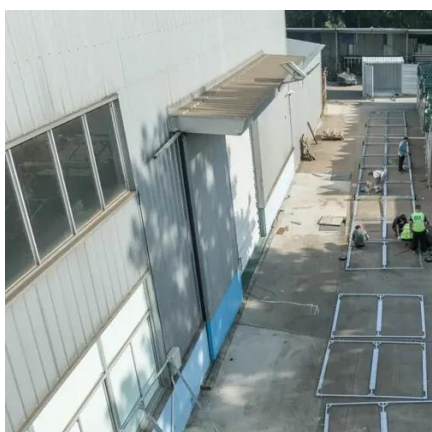


What does 600w solar panel mean? ,



NenPower

1. A solar panel rated at 600 watts is designed to generate energy effectively, catering to energy needs more efficiently than lower-rated panels. 2. This level of wattage allows for the ...

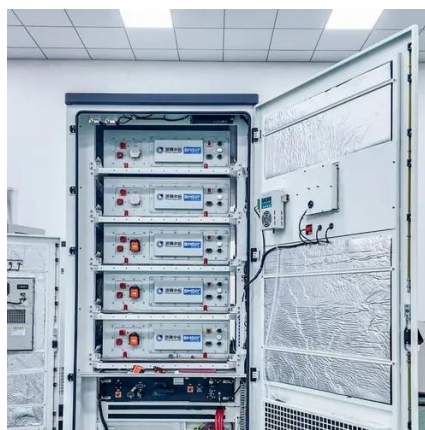


600 Watt Solar Panels Technical Specs & Installation

Residential: 600-watt solar panels can be suitable for residential rooftops where space is available, and higher power output is needed to meet household energy needs.

600W Solar Panel Guide 2025: Performance, Installation & Best Models

Complete guide to 600W solar panels: real-world performance data, installation tips, top brands, and system requirements. Expert testing and reviews included.





Contact Us

For catalog requests, pricing, or partnerships, please visit:

<https://id2market.eu>

Phone: +34 910 56 87 45

Email: info@id2market.eu

Scan the QR code to access our WhatsApp.

